



DESIGN COMPETITION GUIDELINES

EVENT INFORMATION:

Brick by Brick

May 15th, 2025

Woman's Club of Wisconsin

813 E Kilbourn Avenue, Milwaukee WI

ENTRY INFORMATION:

Online Registration Opens **March 10th**

\$500 PER ENTRY

(Includes 2 Tickets to Brick by Brick Event)

Registration Deadline April 15th *(Limited Entries Available!)*

This year's event is a tribute to the Catherine Foley Tavern (266 E. Erie Street), the target of MPA's 2025/2026 restoration efforts.

We are asking participants of this challenge to recreate MPA's historic building in unique and creative ways, and produce their very own miniature version of the corner tavern.

MODEL DIMENSIONS:

Model must be no larger than 1 Cubic Yard (3'W x 3'D x 3'H)

MATERIAL REQUIREMENTS:

You may use whatever material you like, so long as it is not 1) perishable or 2) single-use plastic. 3-D printing is allowed but must be an original design (no prefab/database STL files)

DISPLAY REQUIREMENTS:

Model must be easily transferrable from one location to another with minimal disassembly/reassembly. Recommend all models be built on a solid, flat base for ease of display. Please label your model or model base with your organization or team name.

DUE DATE:

All models must be ready for display the evening of the event: **MAY 15th, 2025**

Each team will be granted early access to the building for set up beginning at 3pm. Set up will end 15 minutes before the event that begins at 5pm. Display tables of adequate size will be provided and assigned the day of the event.

AWARD CATEGORIES

MOST UNIQUE/ARTISTIC INTERPRETATION

MOST SUSTAINABLE

MOST DETAILED/ACCURATE REPRESENTATION

PEOPLE'S CHOICE FUNDRAISER

(Most money raised via paid votes day of the event)

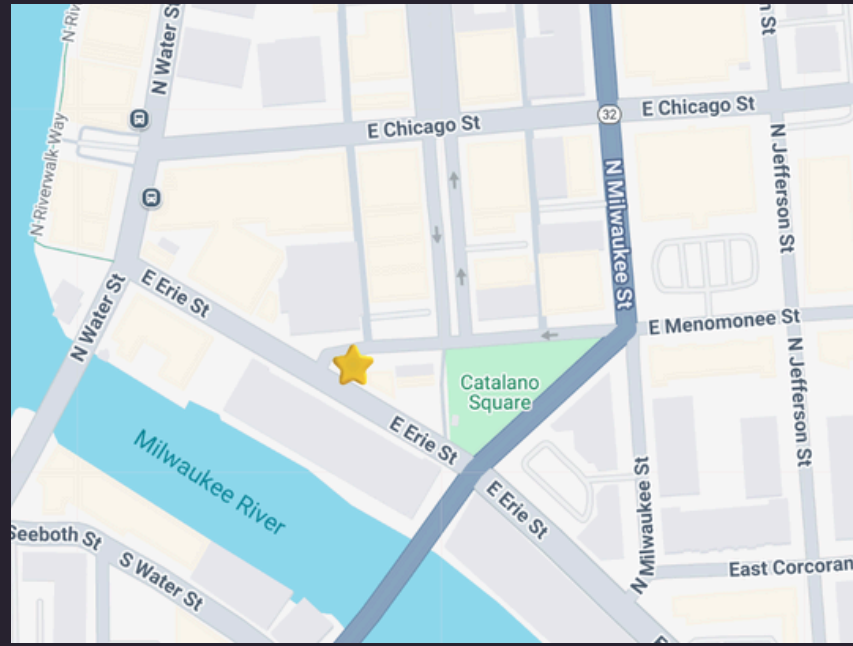
SOCIAL MEDIA CHOICE

(Most votes collected from social media. Voting will open the day after event and remain open for one week.)

***All award winners will be featured on the future Donor Wall @ 266 E Erie Street**
Questions about the guidelines? Please contact mpa@milwaukeepreservation.org

SITE LOCATION:

266 E ERIE STREET
MILWAUKEE, WI 53202



EXISTING PHOTOS



NORTHWEST ELEVATION



NORTH ELEVATION

HISTORIC PHOTO



MID-1930'S



AERIAL LOOKING EAST

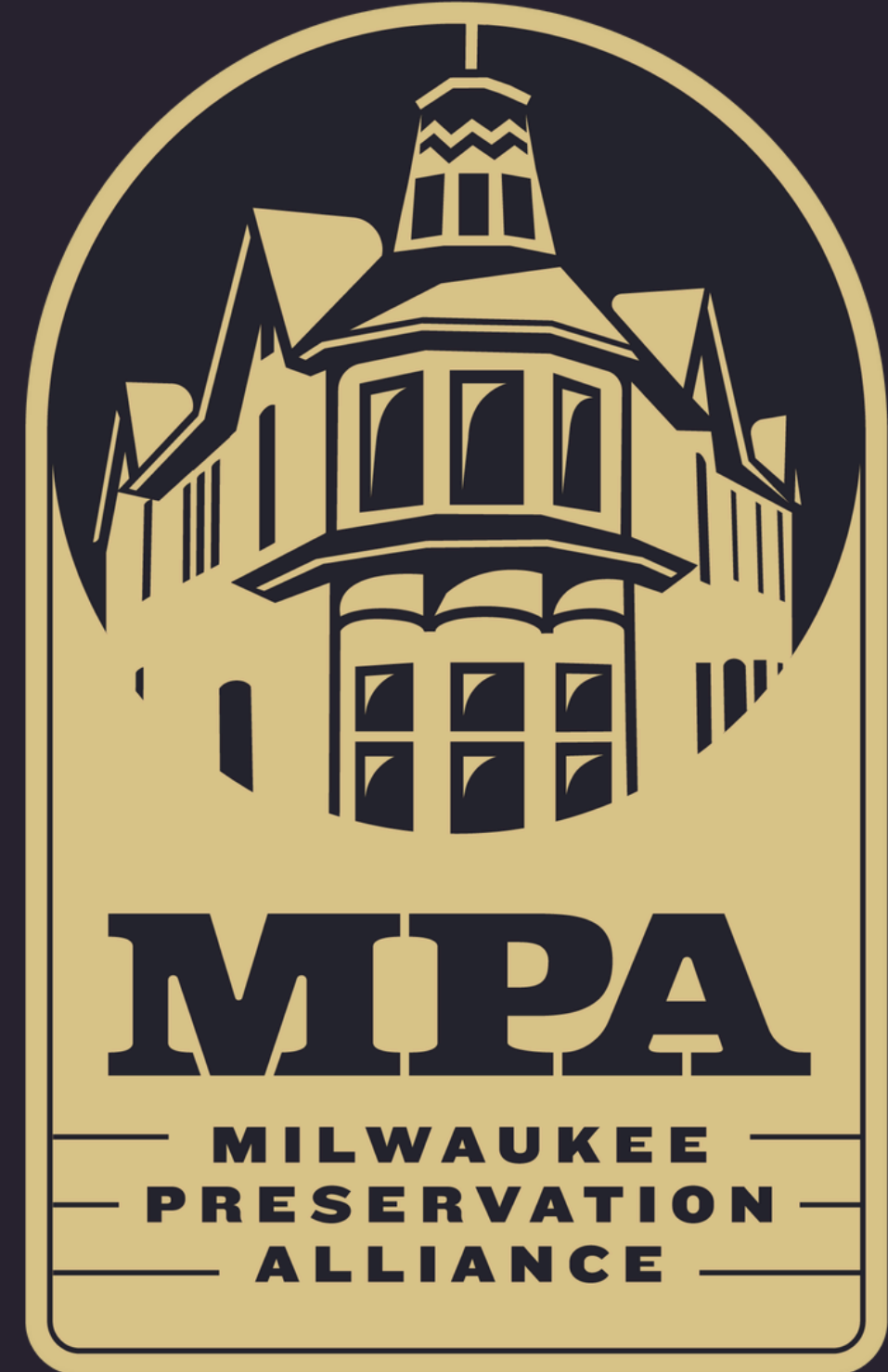


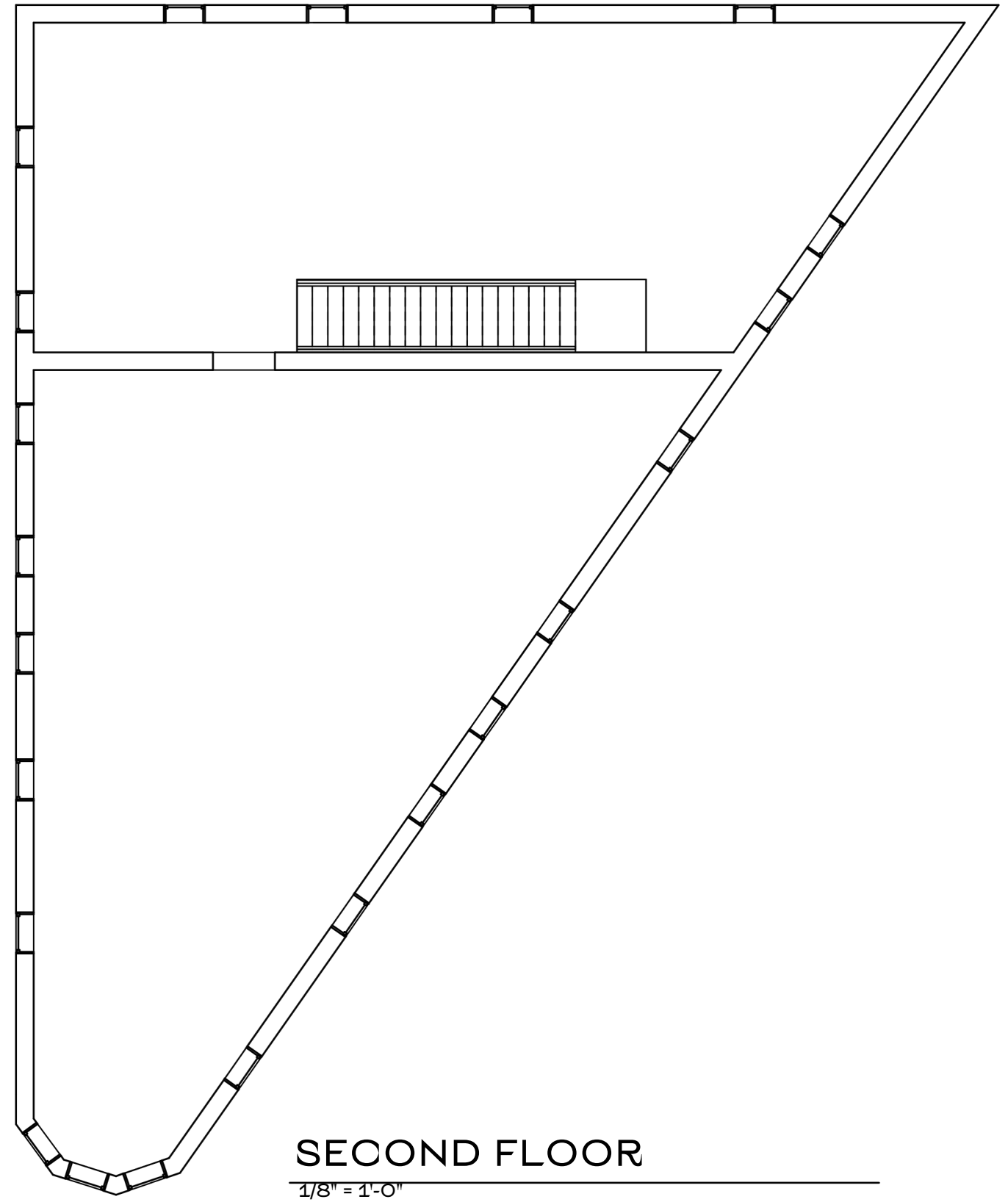
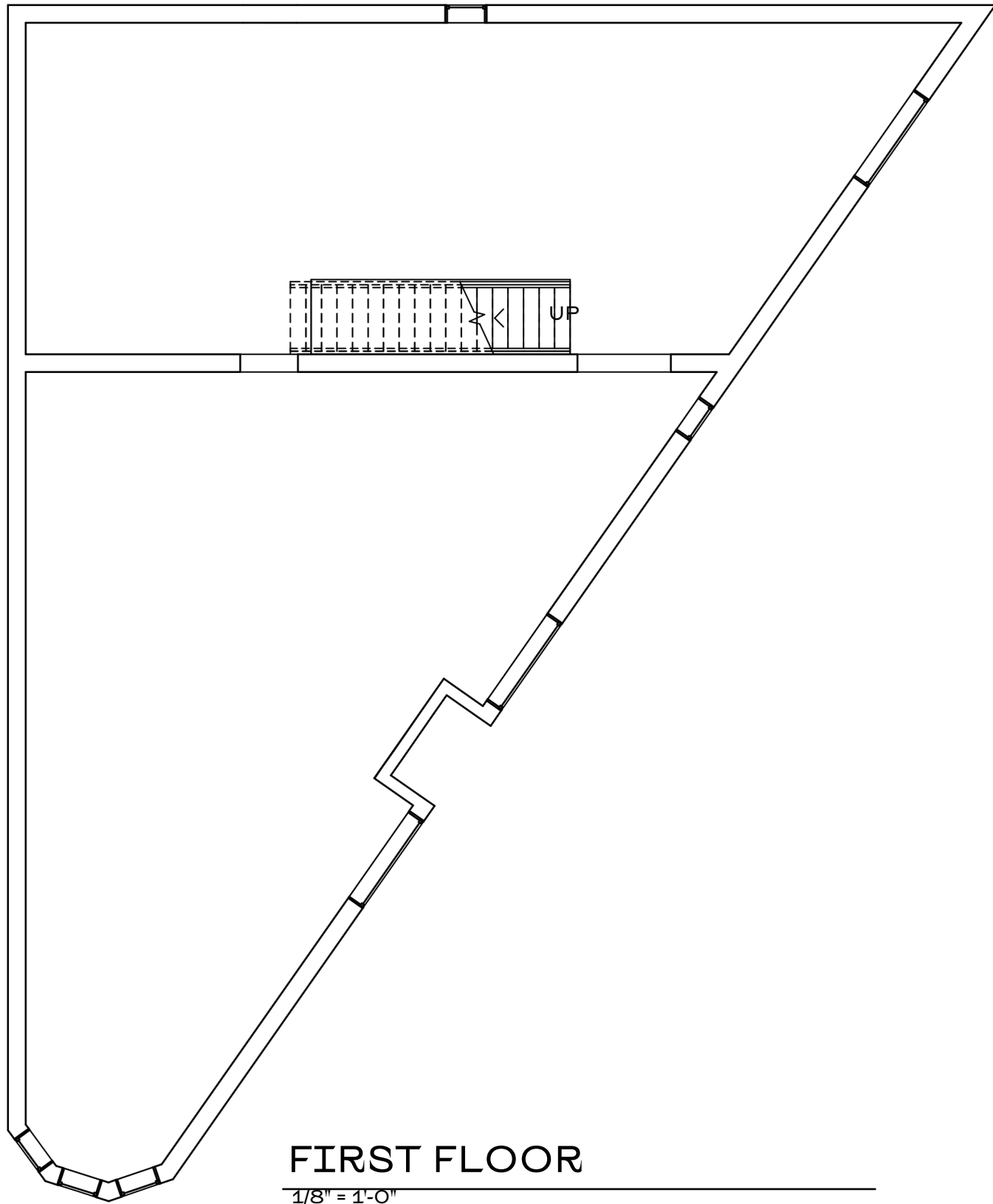
SOUTHWEST ELEVATION

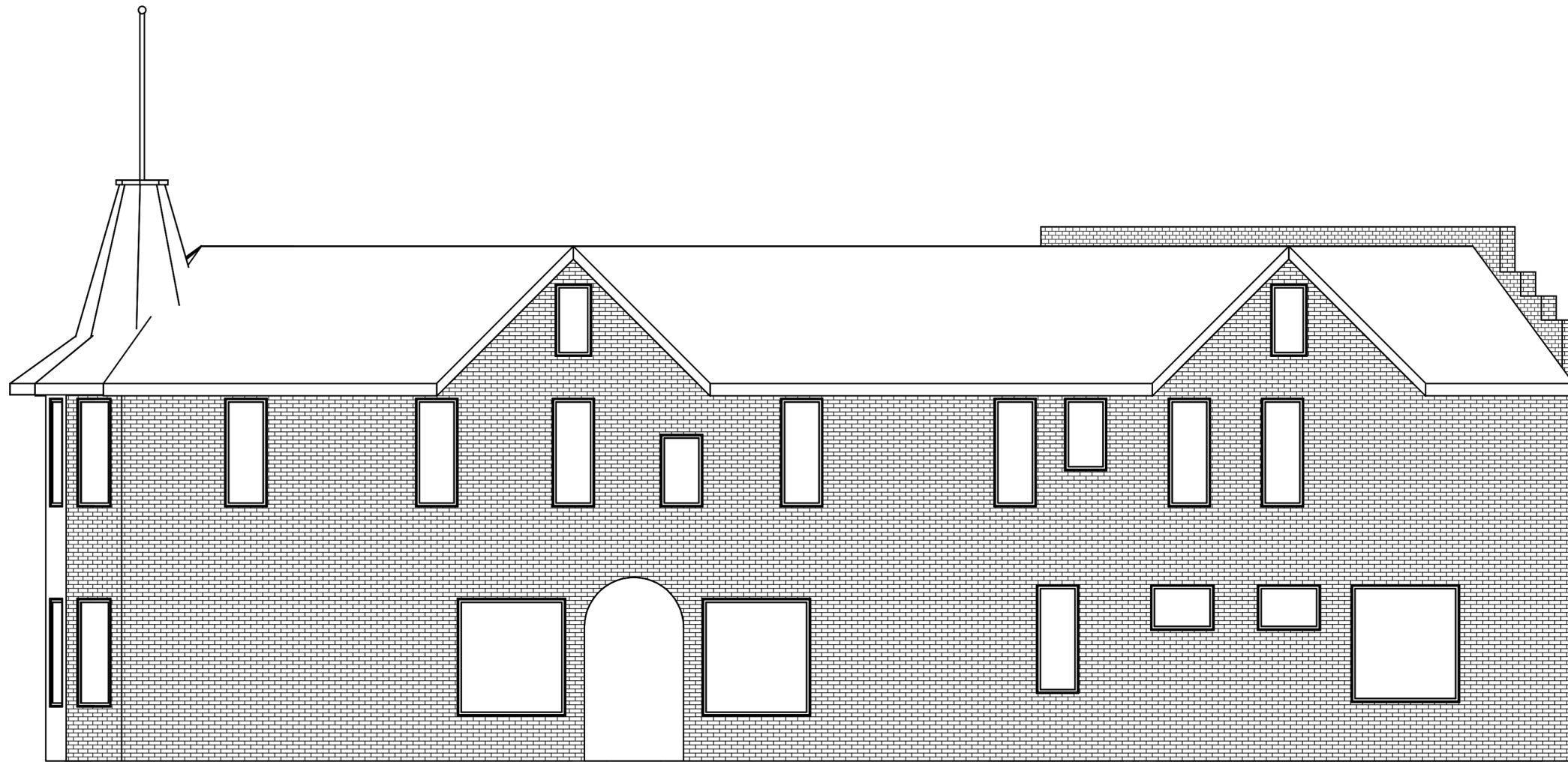
BUILDING PLANS & ELEVATIONS

NOTE:

The following floor plans and elevations were drawn at
1/8" = 1'-0" scale assuming 11x17 printing

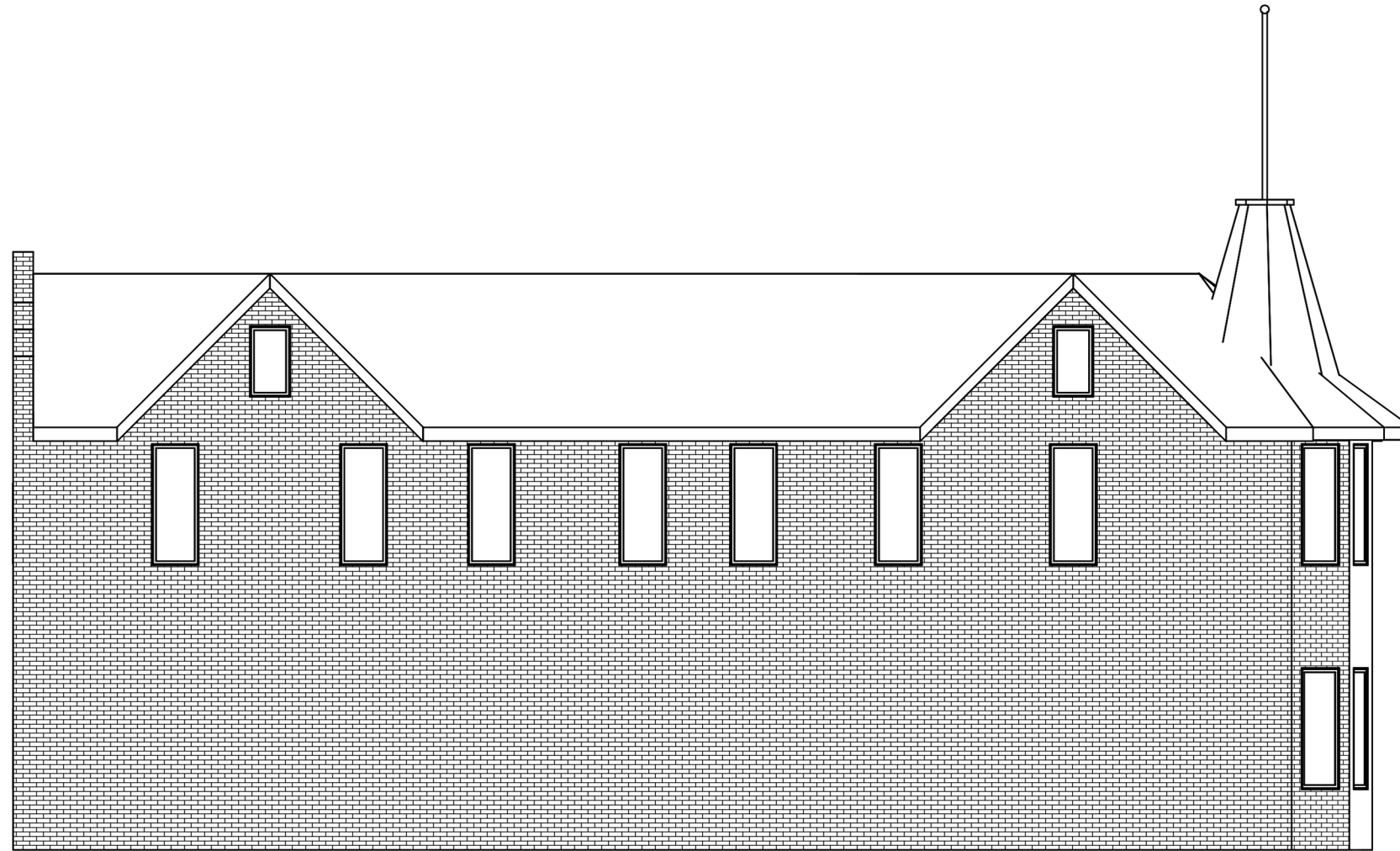






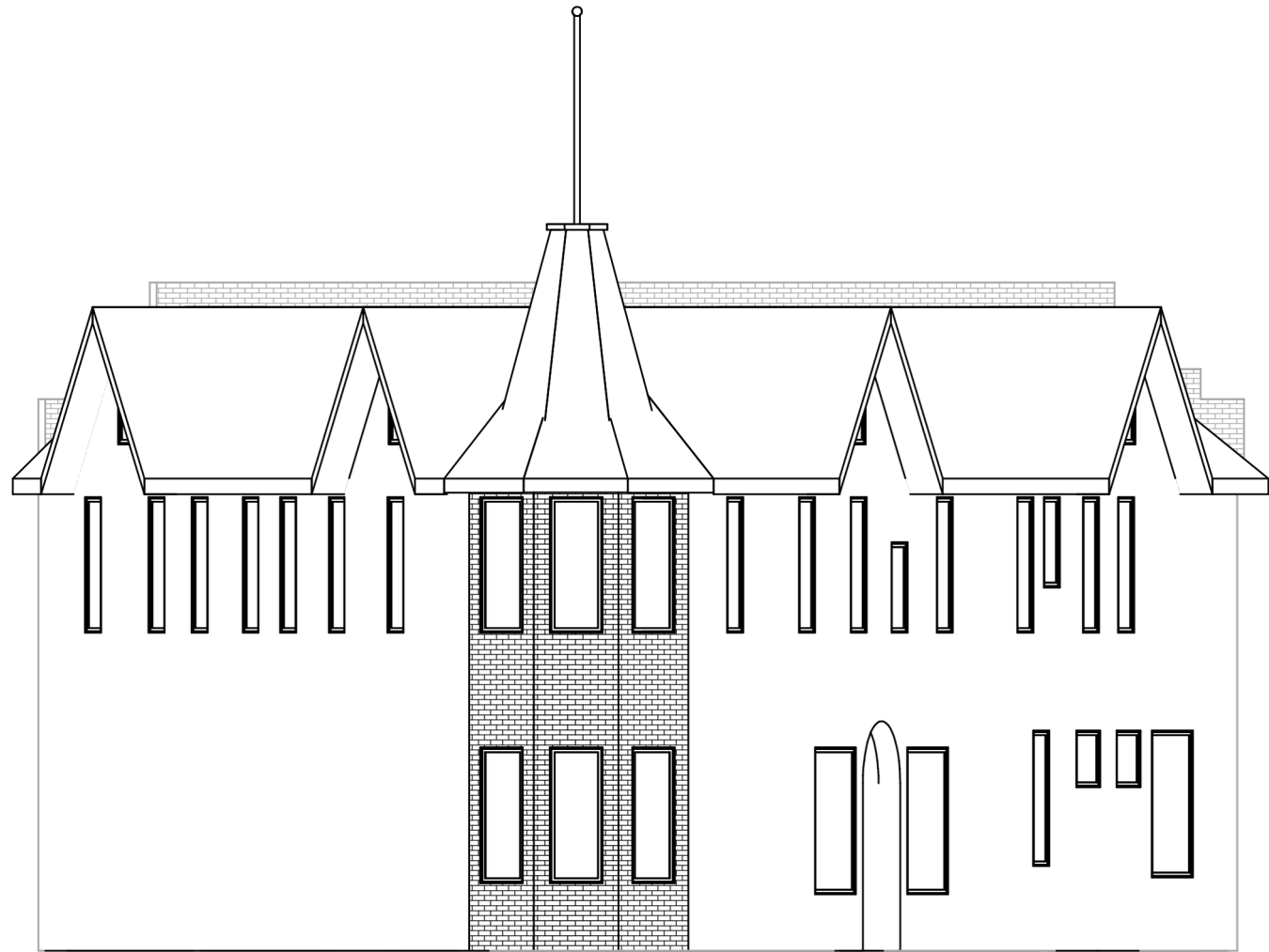
TAVERN SOUTHWEST ELEVATION

1/8" = 1'-0"



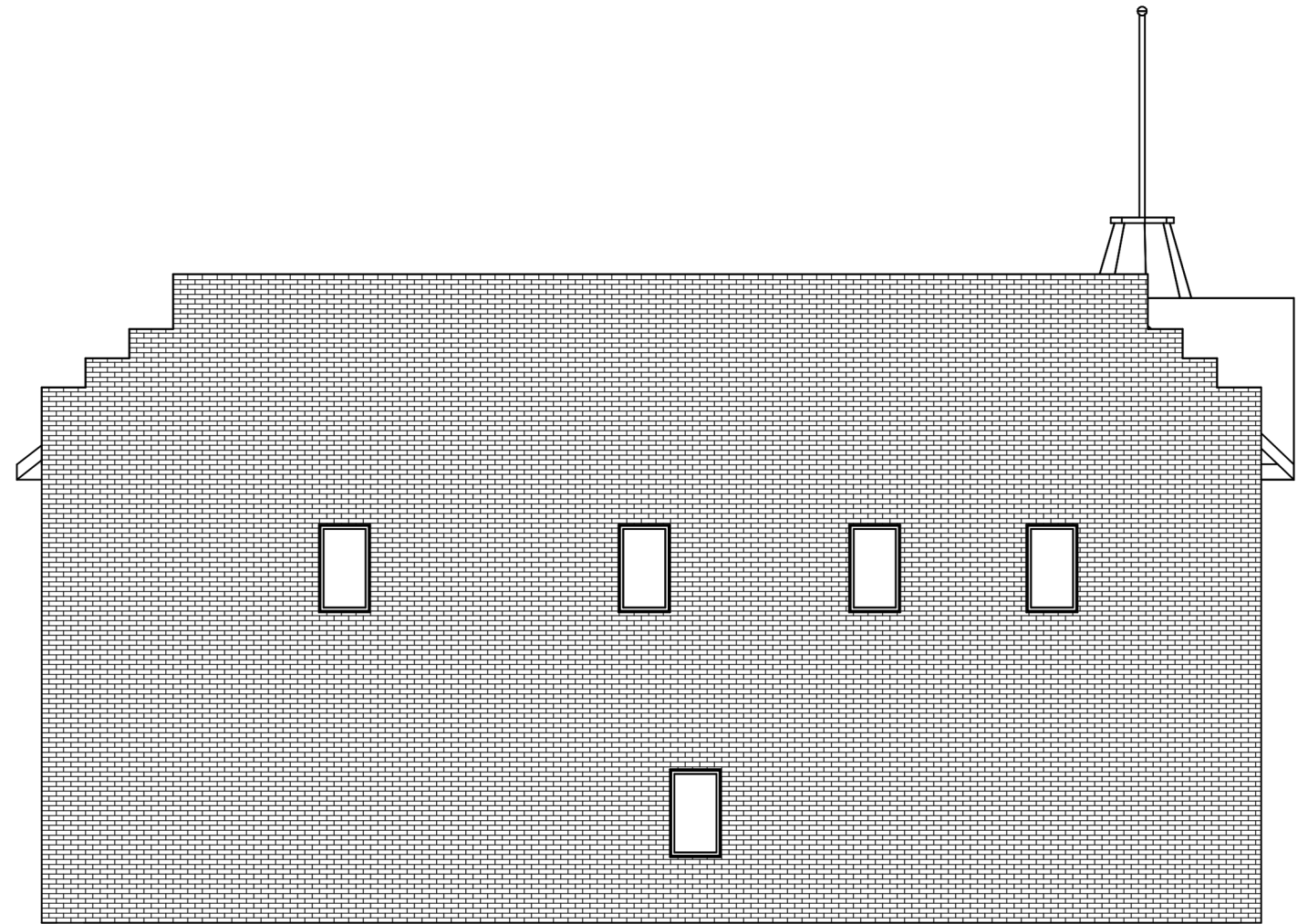
TAVERN NORTH ELEVATION

$1/8" = 1'-0"$



TAVERN NORTHWEST ELEVATION

1/8" = 1'-0"



TAVERN EAST ELEVATION

1/8" = 1'-0"

***START GATHERING
YOUR TEAM TODAY!***
**REGISTRATION OPENS
MARCH 10TH.**

milwaukeepreservationalliance.org/bbb

