



# Jackson Park Drive Road Project

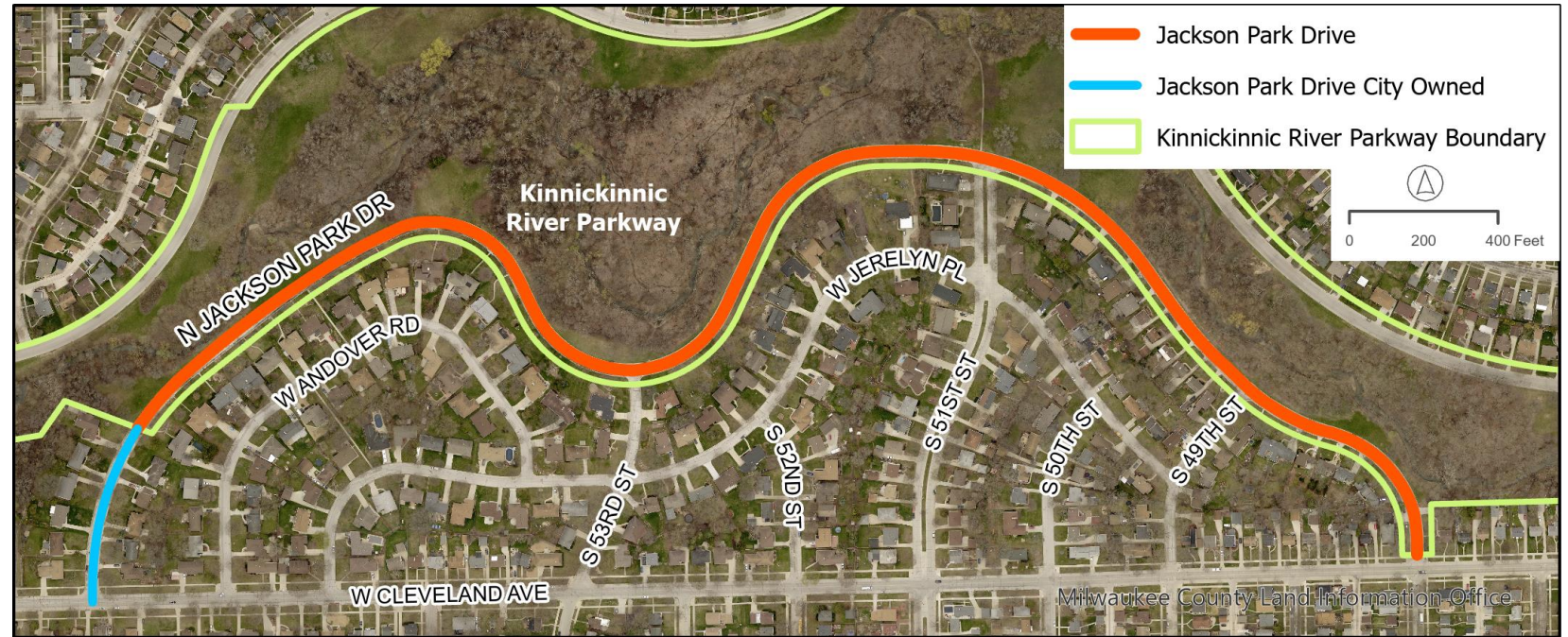
Public Information Meeting  
Thursday, October 5  
5:00 pm – 7:00 pm

Presentation at 5:30 pm

# WELCOME to the Jackson Park Drive PIM!

## Meeting Agenda

- Introductions
- Purpose of the Meeting
- Project Overview
- Review Alternatives
- Engagement Activity
- Next Steps



# PROJECT TEAM AND GUESTS

District 15 County Supervisor Peter Burgelis

District 12 County Supervisor Juan Miguel Martinez

City of Milwaukee District 11 Alderman Mark Borkowski

Tony Giron – Engagement Manager, Milwaukee County Parks

Therese Gripentrog – Senior Landscape Architect, Milwaukee County Parks

David Gulgowski – Managing Engineer, Milwaukee County DAS

Heather Stabo – Engineer, SEH



# PURPOSE OF THE MEETING

The purpose of this meeting is primarily to

## Inform

the public and park constituents about the design process for this Capital Project at Jackson Park Drive

and to

## Request

your feedback on the alternatives presented

*The alternatives we are presenting today are concepts. Final design decisions have not been made.*





# PROJECT OVERVIEW



## Reasons for Project

- Address Poor Road Condition
- Help Meet Milwaukee County Sustainability Goals
- Reduce Pavement in the County Parks System
- Protect Water Resources and Natural Habitat
- Reduce Point Sources of Runoff and Contamination



# COMMUNITY ENGAGEMENT

## Public Engagement

House-to-House from Oct 14 and 18, 2022

Social Media – Next Door, Facebook, Project Page/Parks Website

PIM – November 16, 2022

Supervisor District Meeting – February 25, 2023

## What We Heard From Folks

Emergency Response

Parking for Visitors to Parkway

Access to Residences

Disposal of Yard Waste

Crime & Safety

Property Values/Tax Assessment



# REVIEW ALTERNATIVES





# Jackson Park Drive – KK River Parkway

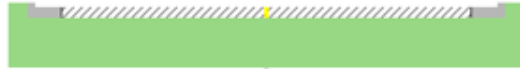
For more information

To learn more about this project, scan the QR code or visit the project website: [www.mkecountyparks.org/kinnickinnic-river-parkway-jackson-park-drive](http://www.mkecountyparks.org/kinnickinnic-river-parkway-jackson-park-drive)

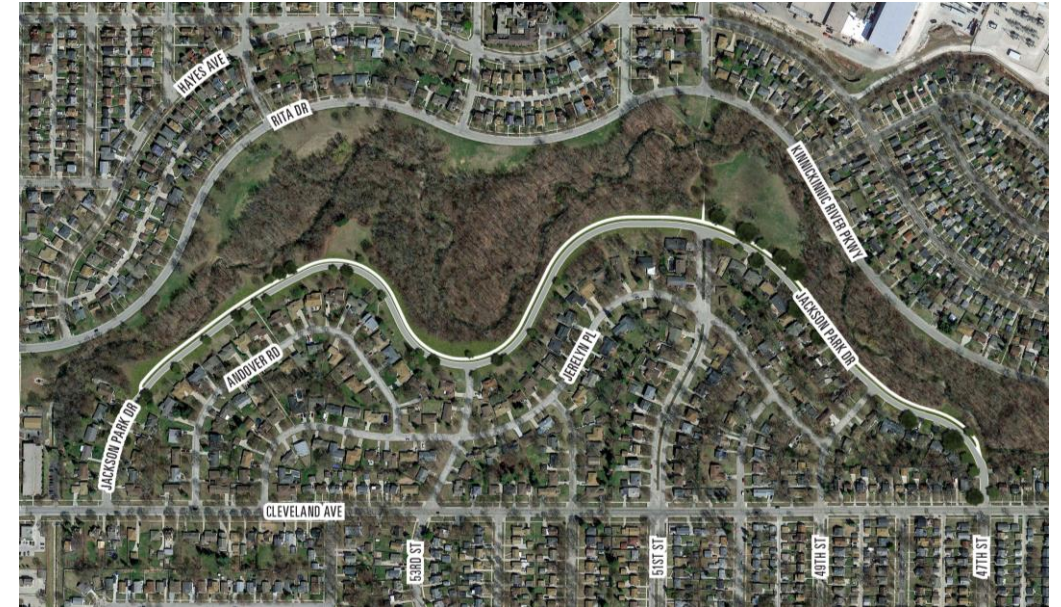


## Alternative A - Road & Trail

Existing Section



Proposed Section



Estimated Cost:  
**\$2,052,785**

Road Reconstructed: 5,090 LF  
Trail Constructed: 4,414 LF



Alternative	Description	Cost	Lifespan	Milwaukee County Parks Preference Criteria				Total Points
				Greenprint Sustainability	Provides Recreational Opportunity	Part of Transportation Grid	Minimizes Impact to Natural Resources	
A	Reconstruct City Road In-Kind; Reduce Width of Jackson Park Drive to Just North of Northernmost Driveway on Westbound Side; 10-ft Trail Alongside Narrowed JPD; Reconstruct Remainder In-Kind	\$2,052,785	20 years	Limited (0 points)	Yes (1 point)	Yes (1 point)	No (-1 point)	1
B	Reconstruct City Road and County Parks Road from 47th to 51st In-Kind; Convert Road to 10-ft Trail In-Between	\$1,531,025	20 years	Yes (1 point)	Yes (1 point)	Limited (0 points)	Yes (1 point)	3
C	Reconstruct City Road In-Kind; Reduce Width of Jackson Park Drive to 53rd; Convert Road To 10-ft Trail from 53rd to 51st; Reduce Width of Jackson Park Drive from 51st to Just North of Northernmost Driveway on Westbound Side; 10-ft Trail Alongside Narrowed JPD; Reconstruct Remainder In-Kind	\$1,840,704	20 years	Limited (0 points)	Yes (1 point)	Limited (0 points)	Yes (1 point)	2
D	Reconstruct Jackson Park Drive In-Kind and Replace 35% of the Curb & Gutter	\$1,773,399	10 years	No (-1 point)	Limited (0 points)	Yes (1 point)	No (-1 point)	-1

Positive Impact to Preference Criteria:	1 point
Minimal Impact to Preference Criteria:	0 points
Negative Impact to Preference Criteria:	-1 point



# Jackson Park Drive – KK River Parkway

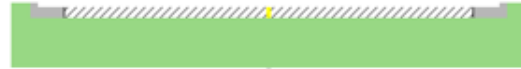
For more information

To learn more about this project, scan the QR code or visit the project website: [www.mkecountyparks.org/kinnickinnic-river-parkway-jackson-park-drive](http://www.mkecountyparks.org/kinnickinnic-river-parkway-jackson-park-drive)

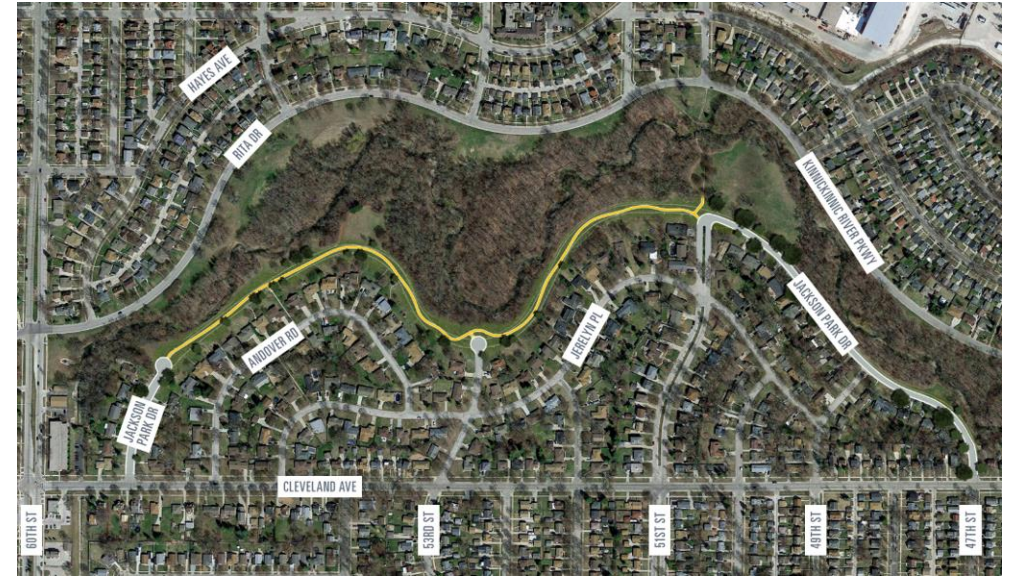
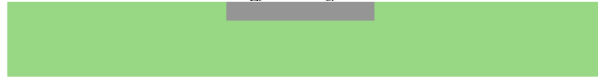


## Alternative B – Partial Trail Conversion

Existing Section



Proposed Section



Estimated Cost:  
**\$1,531,025**

Road Reconstructed: **2,026 LF**  
Trail Constructed: **4,414 LF**



Alternative	Cost	Lifespan	Milwaukee County Parks Preference Criteria				Total Points
			Greenprint Sustainability	Provides Recreational Opportunity	Part of Transportation Grid	Minimizes Impact to Natural Resources	
A	\$2,052,785	20 years	Limited (0 points)	Yes (1 point)	Yes (1 point)	No (-1 point)	1
B	\$1,531,025	20 years	Yes (1 point)	Yes (1 point)	Limited (0 points)	Yes (1 point)	3
C	\$1,840,704	20 years	Limited (0 points)	Yes (1 point)	Limited (0 points)	Yes (1 point)	2
D	\$1,773,399	10 years	No (-1 point)	Limited (0 points)	Yes (1 point)	No (-1 point)	-1

Positive Impact to Preference Criteria:	1 point
Minimal Impact to Preference Criteria:	0 points
Negative Impact to Preference Criteria:	-1 point



# Jackson Park Drive – KK River Parkway

For more information

To learn more about this project, scan the QR code or visit the project website: [www.mkecountyparks.org/kinnickinnic-river-parkway-jackson-park-drive](http://www.mkecountyparks.org/kinnickinnic-river-parkway-jackson-park-drive)

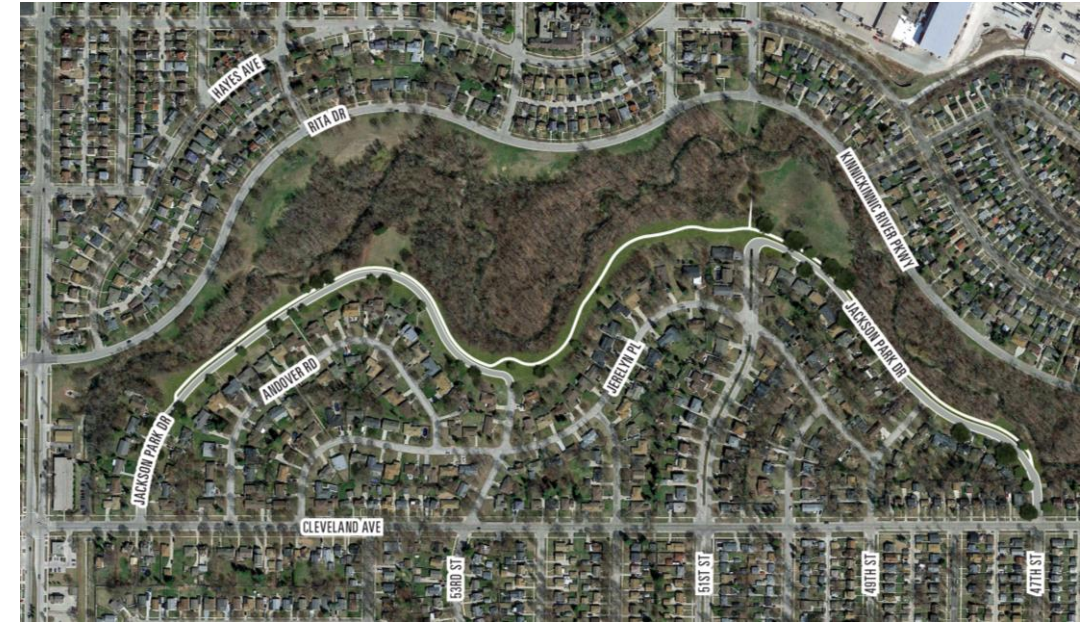
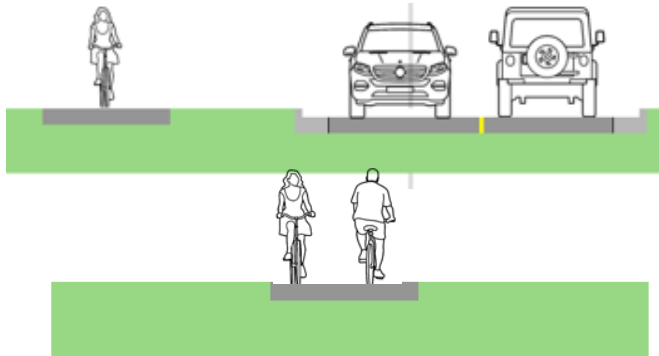


## Alternative C – Road and Trail & Trail Only From 51<sup>st</sup> to 53<sup>rd</sup>

Existing Section

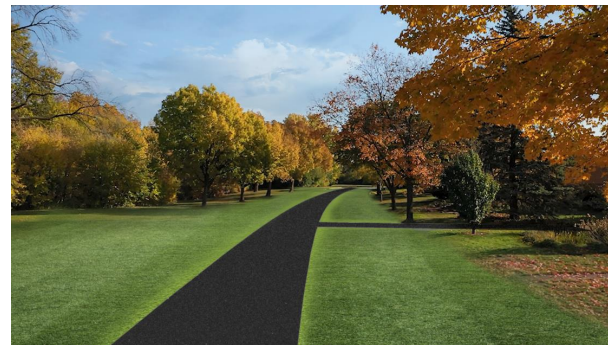


Proposed Section



Estimated Cost:  
**\$1,840,704**

Road Reconstructed: 3,895 LF  
Trail Constructed: 4,414 LF



Alternative		Cost	Lifespan	Greenprint Sustainability	Provides Recreational Opportunity	Part of Transportation Grid	Minimizes Impact to Natural Resources	Total Points
A	Reconstruct City Road In-Kind; Reduce Width of Jackson Park Drive to Just North of Northernmost Driveway on Westbound Side; 10-ft Trail Alongside Narrowed JPD; Reconstruct Remainder In-Kind	\$2,052,785	20 years	Limited (0 points)	Yes (1 point)	Yes (1 point)	No (-1 point)	1
B	Reconstruct City Road and County Parks Road from 47th to 51st In-Kind; Convert Road to 10-ft Trail In-Between	\$1,531,025	20 years	Yes (1 point)	Yes (1 point)	Limited (0 points)	Yes (1 point)	3
C	Reconstruct City Road In-Kind; Reduce Width of Jackson Park Drive to 53rd; Convert Road to 10-ft Trail from 53rd to 51st; Reduce Width of Jackson Park Drive from 51st to Just North of Northernmost Driveway on Westbound Side; 10-ft Trail Alongside Narrowed JPD; Reconstruct Remainder In-Kind	\$1,840,704	20 years	Limited (0 points)	Yes (1 point)	Limited (0 points)	Yes (1 point)	2
D	Reconstruct Jackson Park Drive In-Kind and Replace 35% of the Curb & Gutter	\$1,773,399	10 years	No (-1 point)	Limited (0 points)	Yes (1 point)	No (-1 point)	-1

Positive Impact to Preference Criteria:	1 point
Minimal Impact to Preference Criteria:	0 points
Negative Impact to Preference Criteria:	-1 point





# Jackson Park Drive – KK River Parkway

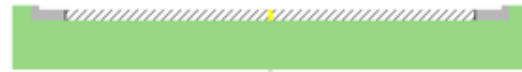
For more information

To learn more about this project, scan the QR code or visit the project website: [www.mkecountyparks.org/kinnickinnic-river-parkway-jackson-park-drive](http://www.mkecountyparks.org/kinnickinnic-river-parkway-jackson-park-drive)

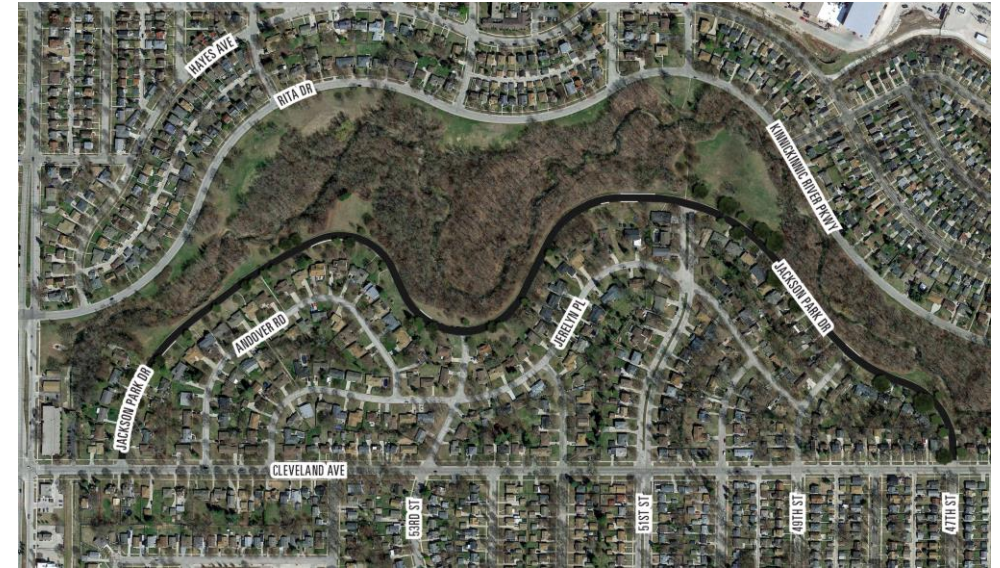
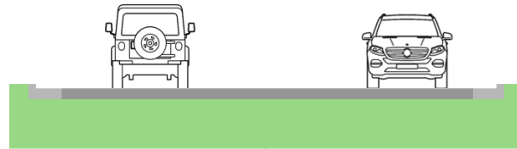


## Alternative D – Roadway and 35% Curb & Gutter Replacement

Existing Section



Proposed Section



Estimated Cost:  
**\$1,773,399**

Road Reconstructed: **5,090 LF**  
Trail Constructed: **0 LF**

Alternative	Cost	Lifespan	Milwaukee County Parks Preference Criteria				Total Points
			Greenprint Sustainability	Provides Recreational Opportunity	Part of Transportation Grid	Minimizes Impact to Natural Resources	
A	\$2,052,785	20 years	Limited (0 points)	Yes (1 point)	Yes (1 point)	No (-1 point)	1
B	\$1,531,025	20 years	Yes (1 point)	Yes (1 point)	Limited (0 points)	Yes (1 point)	3
C	\$1,840,704	20 years	Limited (0 points)	Yes (1 point)	Limited (0 points)	Yes (1 point)	2
D	\$1,773,399	10 years	No (-1 point)	Limited (0 points)	Yes (1 point)	No (-1 point)	-1



Positive Impact to Preference Criteria:	1 point
Minimal Impact to Preference Criteria:	0 points
Negative Impact to Preference Criteria:	-1 point



# Public Engagement Activities

Attendees participated in an Online Activity and a Dot Exercise

## Online Activity

- Attendees took a live online poll using [menti.com](https://www.menti.com)
- For those without a smartphone, paper copies were passed out and added to the results of the online poll. Two duplicate paper copies had to be discarded.
- The online poll allowed attendees to remain anonymous.
- Results were displayed in real time.

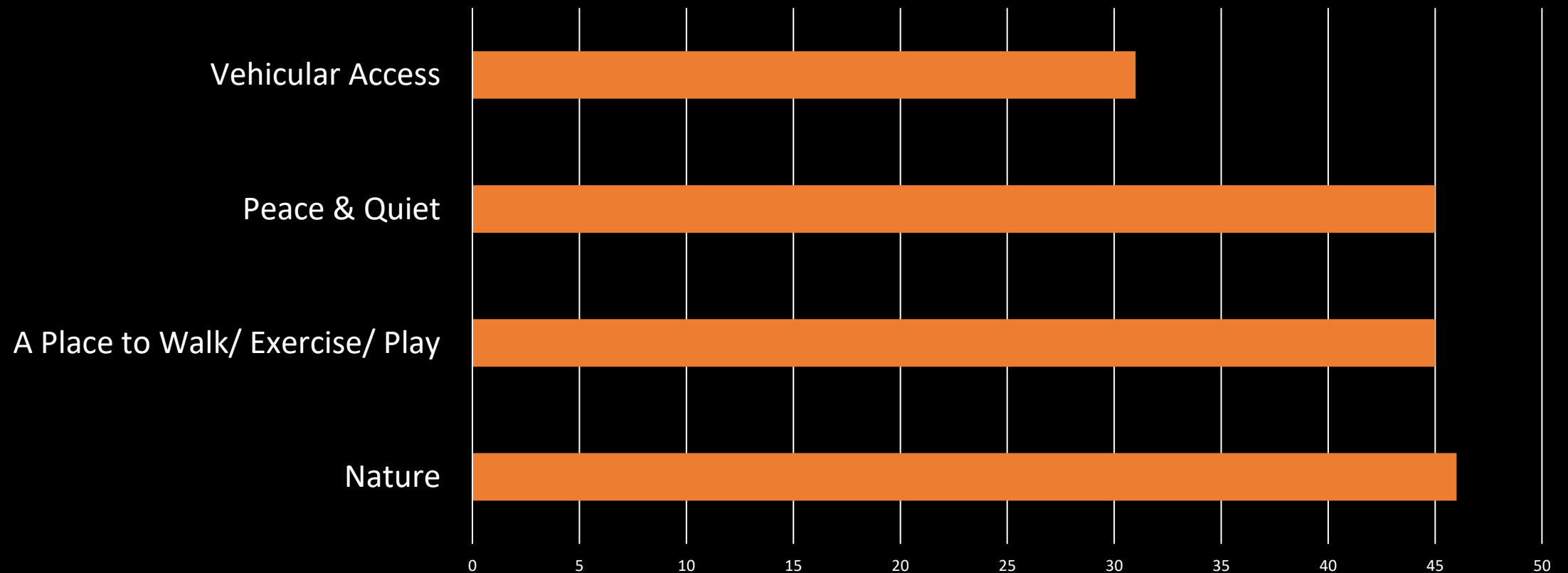
## Dot Exercise

- Attendees were able to rank their preferred options by placing different colored stickers on information boards.
- Parks staff decided to discard the results of this activity due to a lack of clarity on the exercise.



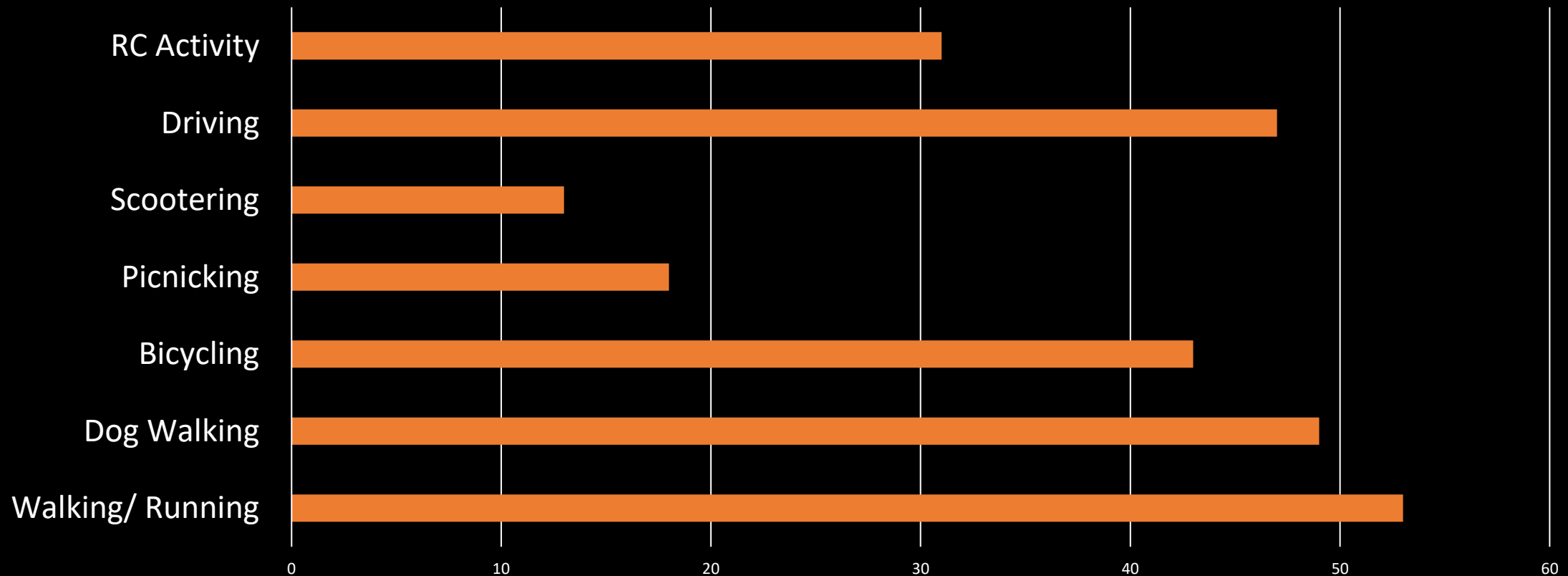
# What do you appreciate about the KK River Parkway?

Jackson Park Drive - Appreciation of KK River Parkway



# What modes of transportation and other activities do you see in the Parkway?

Jackson Park Drive - Modes of transportation and activities seen on the Parkway.





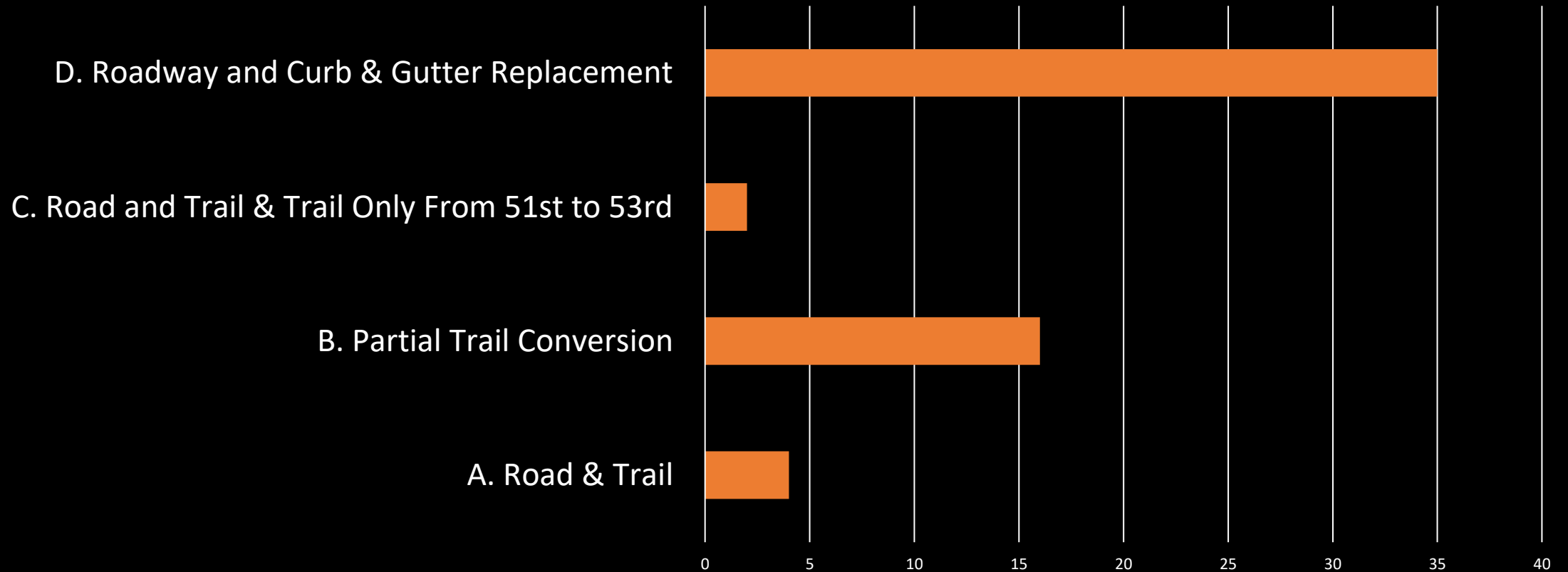
# What aspects of the Jackson Park Drive construction project are most important to you? (Select up to three)

Jackson Park Drive - Most important aspects (top 3)



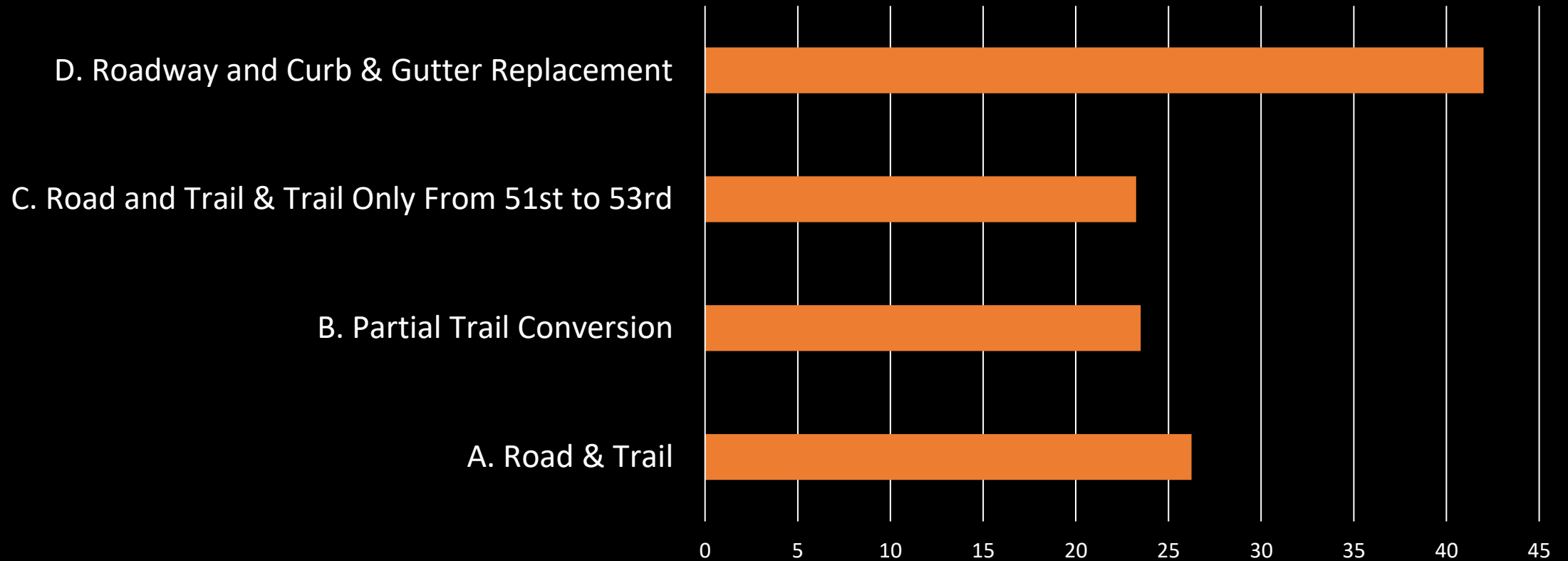
# Please select your preferred option.

Jackson Park Drive - Top Choice



# Please rank the four options presented in order of preference.

Jackson Park Drive - Ranked Choices





# NEXT STEPS

- County Parks Decides Which Alternative to Move Forward With – January 2024
- Develop Final Design – March 2024
- Develop Final Cost Estimates – April 2024
- Department Submits Project Through County Board Budget – July 2024
- Budget Approval – November 2024
- Construction – 2025





# Thank you for attending!

## How to stay involved...

All Comments Due to County Parks by  
Friday/November 3, 2023

Contact: [parcsplanning@milwaukeecountywi.gov](mailto:parcsplanning@milwaukeecountywi.gov)

or

Visit the Milwaukee County Parks  
Jackson Park Drive Project Page

[mkecountyparks.org/kinnickinnic-river-parkway-jackson-park-drive](https://mkecountyparks.org/kinnickinnic-river-parkway-jackson-park-drive)

or

Scan the QR Code

