

**Scope of Work**  
**Wisconsin DNR Office of the Great Waters**

---

**Project Title:** Little Menomonee River Parkway Restoration – Design, Implementation, & Oversight

**AOC(s):** Milwaukee Estuary Area of Concern

**Project Applicant:** Natalie Dutack  
Area of Concern Program Supervisor  
Milwaukee County Parks  
9480 W Watertown Plank Road, Wauwatosa, WI 53226  
[Natalie.Dutack@milwaukeecountywi.gov](mailto:Natalie.Dutack@milwaukeecountywi.gov)  
414-257-5064  
UEI #: G97YX295EFY3

**WDNR Project Manager:** Kelly Hayden  
Project Manager  
Office of Great Waters  
1027 W St. Paul Avenue, Milwaukee, WI 53233  
[Kellym.hayden@wisconsin.gov](mailto:Kellym.hayden@wisconsin.gov)  
414-550-7581

**Project Location:** The Little Menomonee River Parkway (LMRP) is located between County Line Rd and confluence with the Menomonee River near Hampton Avenue. The LMRP is subdivided into six sections. Based on similarities of habitats and project objectives, the LMRP sections in this Scope of Work (SOW) are grouped into three project areas: 1) **Sections 4 & 5.** Located between Good Hope Road to Appleton Ave; 2) **Section 1.** Located between County Line Rd and Brown Deer Rd.; 3) **Sections 2, 3, & 6.** Sections 2 & 3 located between Brown Deer Rd. and Good Hope Road and Section 6, located between Appleton Ave and Hampton Ave. See attached map.

**Project Background/Rationale:** Habitat restoration within the LMRP was identified as a necessary fish and wildlife restoration project in the Milwaukee Estuary AOC Remedial Action Plan (RAP) 2015 Update. Projects in the SOW will help with an overall goal of delisting the Milwaukee Estuary AOC, addressing the “Loss of Fish & Wildlife Habitat” and “Degradation of Fish and Wildlife Populations” Beneficial Use Impairments (BUI). The project area is within a “primary environmental corridor,” defined by the Southeastern Wisconsin Regional Planning Commission (SEWRPC) as “elongated areas in the landscape which contain concentrations of the best remaining elements of the natural resource base, including wetlands, woodlands, surface-water areas and associated undeveloped shorelands and floodplains, and wildlife habitat areas.”

The LMRP Section 2 is the location of the former Moss-American/Kerr-McGee Superfund site and deed restrictions exist within Sections 2 through 6 of corridor. While remedial actions have taken place to protect human health in the short term, the impact of these actions within the project area and other land use impacts have left portions of the habitat in the corridor ecologically degraded. Other contributing factors to habitat degradation revolve around historic intensive agriculture that led to farming most of the LMRP

directly up to the riverbanks, recent and significant loss of floodplain forest canopy due to the impacts of emerald ash borer on native ash tree populations, deer populations significantly exceeding carrying capacity, and the long-term impacts of invasive non-native species on native plants and wildlife populations. Aquatic habitat degradation suffered a similar fate due to historic draining and filling of wetlands, channelization of the riverbed, rapid stormwater run-off from impervious urban surfaces, and declining water quality from agriculture in the upper watershed.

Since the remaining natural habitat within the LMRP is almost exclusively in public ownership, it provides the opportunity to improve a sizable habitat area for fish and wildlife while providing improved connectivity to the upper portions of the watershed.

Work conducted to date within the LMRP includes:

- Preparation of an *Ecological Restoration and Management Plan*
  - Sections 2-6, upland (2017-2019)
  - Section 1, upland (2020-2022, aquatic forthcoming)
- Preparation of a *Habitat Restoration Plan* and a *Monitoring Plan*
  - Sections 4 & 5, upland (2020)
  - Sections 2, 3, & 6, upland (due December 2023)
- Preliminary habitat restoration work in Sections 4 & 5-upland, the sections containing highest quality natural communities (2020 - present)

**Proposed Work:** The proposed scope of work for this project includes completing habitat restoration in Sections 4 & 5-upland;<sup>1</sup> the preparation of a Habitat Restoration Plan (HRP) for LMRP Section 1-upland;<sup>2</sup> and the implementation of habitat restoration work in Sections 2, 3, 6-upland.<sup>3</sup> For full details of project scopes and activities please see the Section 2-6 ERMP (MCP, 2018), LMRP 1 ERMP (MCP, 2022), HRP (Stantec, 2021), and Monitoring Plan (Stantec, 2022) noted in *References*.

Continued Habitat Restoration Implementation: Sections 4 & 5 - upland (2023-2026)

- Contractor Eco-Resource Consulting will continue habitat restoration work, including invasive species management and the establishment of native vegetation, as outlined in the 2021 HRP. Work will be conducted as outlined in the Timeline section but may be adjusted based on any impacts to the field season and seasonal requirements of work. An amendment to the existing QAPP will also be required.
- Design consultant Stantec will conduct habitat restoration oversight and vegetative monitoring to ensure successful invasive management and establishment of native vegetation as outlined in the HRP.

Habitat Restoration Plan Design: LMRP Section 1 – upland (2023-2026)

- Selected Consultant: Prepare an HRP for upland Section 1 of the LMRP based on the finalized 2022 MCP ERMP for Section 1, consisting of, but not limited to, management recommendations, technical specifications, a monitoring plan, wetland delineation, and long-term maintenance plan.
- An Archaeological Cultural Resources Assessment will also be completed during this project phase to adhere to Section 106 National Historic Preservation Act (NHPA) requirements. The Section 106 review will include both the upland and aquatic portions of Section 1.

---

<sup>1</sup> Work that was started under the Little Menomonee River Corridor Habitat Restoration Project Grant (GL00E02393).

<sup>2</sup> Based on the 2022 ERMP that was completed by MCP.

<sup>3</sup> Based on the HRP that is currently being designed by ERC.

**Habitat Restoration Implementation: LMRP Sections 2, 3, & 6 – upland (2024-2026)**

- Selected Contractor: A habitat restoration contractor will be hired to conduct first three years of habitat restoration work as outlined in the HRP. Work will include invasive species management, wetland restoration, and native revegetation within the project area. Final three years of work planned to be completed under separate funding.
- Design consultant Eco-Resource Consulting will conduct habitat restoration oversight and vegetative monitoring through the project to ensure successful invasive management and establishment of native vegetation, following guidelines in the HRP for Sections 2, 3, & 6.

**Collaboration with Partners:** A project team made up of representatives from the WDNR, MCP and partners will ensure coordination and continuous interaction between parties. At a minimum the project team will include the respective project managers for all agencies. The project team will utilize collaborative decision making. The team shall function within the framework of funding regulations, state statutes, and County ordinances. It is recognized that project outputs must meet Milwaukee Estuary AOC goals and criteria within the scope of the AOC program. It is WDNR’s responsibility to ensure satisfaction of these goals and criteria.

**Timetable: October 1, 2023 to December 31, 2026**

<b>Continued Habitat Restoration Implementation: LMRP Sections 4 &amp; 5 - Upland</b>		
QAPP Amendments	November-December 2023	MCP; Contractor/Consultants
Implementation of the HRP for LMRP Sections 4 & 5 – invasive management & revegetation; construction oversight & monitoring	January 2024-December 2026	MCP, Contractor/Consultants
Reporting	Quarterly	MCP, Contractor/Consultants
Final Report, Billing, & Project Closeout	December 2026	MCP, Contractor/Consultants
<b>Habitat Restoration Plan: LMRP Section 1 – Upland*</b>		
Request for Proposal (RFP) developed	October-November 2023	MCP AOC Program Supervisor
RFP Posted + Proposal Selection Process	February-March 2024	MCP
Consultant Selected & Contract Awarded	March- April 2024	MCP
Quality Assurance Documentation (development and approval)	April 2024-May 2024	MCP; Consultant
Preparation of permits; Section 106* (upland and aquatic) review and determinations	April/May 2024	Consultant, DNR, USEPA
Historical Reviews/Data Gap Analysis	April-July 2024	Consultant

DRAFT  
7/21/2023

Field Visits	April 2024- April 2025	Consultant
Hydrology Analysis / Assessment	April 2024 – April 2025	Consultant
Drafting of Habitat restoration design plan sets	May 2024 – December 2025	Consultant
Draft Design Completed (60%); Assessment by stakeholders	September 2025	Consultant, MCP, DNR; Stakeholders
Public Outreach Event	September 2025	MCP, Consultant (as needed), DNR, WRP, CAC
Draft Design Completed (90%); Assessment by stakeholders	November 2025	Consultant, MCP, DNR, Stakeholders
Project reporting	Quarterly	MCP, Consultants
Additional public outreach and Tech Committee updates	As necessary	MCP, Partners, DNR, Consultants
Final Report, Billing, & Project Closeout	January 2026	MCP, Consultants
<b>Habitat Restoration Implementation: LMRP Sections 2, 3, &amp; 6 - Upland</b>		
Bid Developed	October-December 2023	MCP AOC Program Supervisor & County Dept. of Admin
Bid Posted + Bid Selection Process	January-March 2024	MCP
Contractor Selected & Contract Awarded	March-April 2024	MCP
Quality Assurance Documentation (development and approval)	April 2024	MCP; Contractor
Implementation of the HRP Management Activities; oversight + monitoring	May 2024 – December 2026	Contractor/Consultants, DNR, USEPA
Project reporting	Quarterly	MCP, Contractor/Consultants
Additional public outreach and Tech Committee updates	As necessary	MCP, Partners, DNR, Contractor/Consultants
Final Reporting, Billing, & Project Closeout	December 2026	MCP, Contractor/Consultants

**Deliverables:** This section outlines tasks for each project, 1) Continued Habitat Restoration Implementation: LMRP Sections 4 & 5 - upland; 2) Preparation of a Habitat Restoration Plan: LMRP Section 1 - upland; 3) Habitat Restoration Implementation: LMRP Sections 2, 3, & 6 - upland, and Overall Project Management Tasks that apply to each.

**A. Overall Project Management Tasks**

Task 1A: Services and Project Development

MCP will coordinate and develop an RFP for LMRP Section 1 Design and a Bid for LMRP 2, 3, & 6 Habitat Restoration, submitting to DNR for review and approval. Following County procurement

DRAFT  
7/21/2023

processes, consultants/contractors will be selected. MCP will also amend the existing contract with ERC to include tasks and funding through completion of work for Sections 4 & 5.

Deliverables:

- a) Draft and Final LMRP Section 1 Design RFP and draft LMRP Section 2, 3, & 6 Habitat Restoration Bid.
- b) Copy of all RFP and Bid submittals
- c) Contract with ERC for continuation of Section 4 & 5 habitat restoration amended (October-December 2023)

Task 2A: Quality Assurance Project Plans (QAPPs)

For each project area, selected consultants/contractors will be responsible for Quality Assurance Project Plan (QAPP) preparation and amendment, with review and approval by MCP and DNR.

Deliverables (all in electronic format):

- a) LMRP 1 Design QAPP
- b) LMRP 2, 3, & 6 Habitat Restoration QAPP
- c) Updated QAPP (ERC) for LMRP 2, 3, & 6 Habitat Restoration Oversight & Vegetation Monitoring as needed.

Task 3A: Permitting and Regulatory Requirements

Consultants/contractors will prepare all applicable federal, state, and local permit applications and gain regulatory approvals as required. Prepare materials and ensure compliance with National Historic Preservation Act, National Environmental Policy Act and Endangered Species Act.

Deliverables:

- a) Copies of all permit applications, materials, and regulatory correspondence

Task 4A: Collaboration with Project Partners and Stakeholders

MCP will collaborate with DNR, WRP, and CAC throughout the project, coordinating community and stakeholder outreach, as determined through collaboration, identification of outreach and messaging needs, and public input goals. The County will include in all phases of the project appropriate public input processes and notices in addition to soliciting input from the Tech Team during the design and comprehensive restoration and management plan stages. The DNR project manager will facilitate input via the Tech Team for technical expertise, as well as the Milwaukee AOC Outreach and Communications team for any materials that are to be developed for public outreach or meetings.

Deliverables:

- a) Summary of public feedback, public meeting minutes, and stakeholder (DNR, Tech Team, Waterway Restoration Partnership, MKE AOC Outreach and Communications Team) meeting minutes in electronic format; electronic format copy of any public informational meeting deliverables, presentations, meeting notices, etc.

Task 5A: Reporting

Prepare and submit quarterly reports, quarterly invoices, and a final report. Reports will be submitted January 1, April 1, July 1, and October 1. Reports will identify amount expended per quarter, activities conducted, and planned activities for the upcoming quarter, along with identification of any issues encountered (including delays or deviations from the original schedule or

other setbacks) during the quarter and how they were addressed. The final reports will include a summary of all the work performed during implementation.

Deliverables:

- a) Quarterly Project Reports for each quarter from receipt of funding through project close out.
- b) Final reports on activities completed

**B. Continued Habitat Restoration Implementation: LMRP Sections 4 & 5 - upland**

Task 1B: Continued Implementation of Habitat Restoration Plan Sets – ERC

ERC will continue invasive management activities, followed by installation of native plant/seed as outlined in the HRP. Activities will include:

- Reforestation Polygon 18 & 20
- Rapid Response Invasive Species Removal (RRISR) Polygon 17 & 21
- Grassland Restoration Polygon 26 & 29
- Grassland Management Polygon 25
- Forest Stand Improvement Polygon 24
- RRISR Polygon 23 & 30
- Wetland Restoration Polygon 27 – Rhamnus spp. Removal
- Sedge Meadow Restoration Polygon 28

Deliverables:

- a) Successful management of invasive species and installation of native species, as defined in the HRP and MP. See: *Little Menomonee River Parkway Sections 4 & 5 Habitat Restoration Plan* and *Little Menomonee River Parkway Sections 4 & 5 Monitoring Plan*

Task 2B: Continued Habitat Restoration Oversight and Vegetative Monitoring – Stantec

Stantec will continue to provide oversight of ERC's restoration activities and conduct monitoring to ensure invasive management and native vegetation establishment goals are reached.

Deliverables:

- b) Habitat Restoration Oversight: Stantec will conduct a bi-weekly site visit to review the status of the project implantation. Items and actions may include but are not limited to a review of the ongoing management activities, a walkthrough of the site for general observations, verifying project plans are being implemented as designed, review of herbicide logs, and reviewing if project is following anticipated schedule. A brief summary report of the current status of the project will be provided monthly. See: *Contract Amendment 1: Project Oversight*
- c) Habitat Restoration Monitoring: Stantec will implement the MP to ensure invasive management and native vegetation establishment goals are reached. Monitoring protocol for each of the eight habitat restoration plans is described in the MP. The Habitat Restoration Goals and targets are restated from the HRP, and monitoring or sampling protocol follows to determine if the restoration goals and performance standards are achieved and what adaptive management actions are triggered. Each ecological area monitoring data and brief assessment shall be reported to Milwaukee County Parks prior to the termination of the restoration period. See: *Little Menomonee River Parkway Sections 4 & 5 Monitoring Plan*

**C. Habitat Restoration Plan: LMRP Section 1 - upland**

Task 1C: Cultural Resources Archaeological Assessment

Hired consultant will conduct an archaeological archival/literature review and a Phase 1 assessment of Little Menomonee River Parkway Section 1 to include both upland and aquatic portions of the section. This will include identification of all cultural resources, both archaeological and architectural, directly within the project area as well as resources within one mile of the project area.

Deliverables:

- a) Survey documentation including completed data sheets, photographs, and other documentation will be submitted in the appropriate format, with electronic format preferred. Photographs should be of the highest resolution and all field work, accurate location information for survey sites, and boundaries must be collected using GPS with 95% accuracy, so data can be used in geographic information systems, including ArcGIS 10.8.1 or ArcPro. The referencing system and datum (i.e. WGS84, WTM 83/91) must be documented for data collected.
- b) Section 106
  - Delineate the area of potential effects (APE), map or site figure
  - Identify previous archaeological surveys or documentation of historic properties (also for nearby relevant areas)
  - Conduct desktop or field surveys as appropriate
  - Identify any historic properties
  - Identify relevant consulting parties if appropriate for the project
  - Involve public – both before and after determination of effect as appropriate for the project and identify how the public was involved
  - Submit report(s) of investigation along with SHPO consultation form to EPA for review
  - Following EPA review, submit SHPO form and reports to SHPO (GLNPO to send letter to applicable parties/tribes)

Task 2C: Hydrology Assessment

Completion of baseline wetland delineation and hydrology assessment to determine:

- The potential of more fully connecting man-made emergent marshes to the Little Menomonee River by removing berms that prevent full hydrological connections.
- The potential to increase the depth and hydro-periods of the four ephemeral ponds identified within the floodplain forest.

Site hydrology requires analysis, including determination of the water source and potential hydroperiod, through the installation of shallow groundwater monitoring wells within wetland depressions. If supported by baseline hydrology data, design for wetland scrapes and berm removal will be incorporated into the HRP.

Task 3C: Habitat Restoration Plan Sets for Upland Restoration

Design or plan sets of the on the ground land management activities for wildlife: invasive species control, forest stand improvement, reforestation, grassland restoration, wetland restoration, native revegetation, and prescribed burns. The HRP will also include vegetative monitoring plans through the implementation phase and a long-term maintenance plan.

Deliverables:

- a) HRP Sets including, but not limited to:

DRAFT  
7/21/2023

- Descriptions of all proposed restoration and maintenance activities, methods, equipment, recommended management schedules/timelines.
- Technical Specifications, including but not exclusive to specifications for management activities, equipment, and herbicide use, supporting data, GIS generated for the plan, and other related information.
- Development of ephemeral pond design/ wetland scrape and restoration plan. This task is dependent upon results of hydrology assessment.
- Monitoring Plan outlining a qualitative monitoring protocol to assess the site during and after restoration implementation. The findings of the qualitative assessment will be used to guide adaptive restoration strategies as needed.
- Long Term Maintenance Plan that can be used by Park staff and volunteers for restored areas. This should provide a detailed outline annual activities required to manage the project area and maintain desired conditions to meet AOC, MCP, and Partner goals, including detailed information about prescribed burns and the necessary requirements/conditions.

**D. Habitat Restoration Implementation: LMRP Sections 2, 3, & 6 - upland**

*Task 1D: Implementation of Habitat Restoration Plan Sets – Selected Contractor*

The selected consultant will implement invasive management activities, followed by installation of native plant/seed as outlined in the pending HRP. Activities will include, but are not limited to:

- Rapid Response Invasive Species Removal (RRISR)
- Grassland Restoration
- Grassland Management
- Reforestation
- Specialized habitat restoration - sedge meadow, pocket wetland, shrubland, and prairie.
- Revegetation with native species (plant and seed)
- Use of prescribed burns as a management tool

Deliverables:

- a) Successful management of invasive species and installation of native species, as defined in the HRP and MP.

*Task 2D: Habitat Restoration Oversight and Vegetative Monitoring – ERC*

ERC will provide oversight of the selected consultants restoration activities and conduct monitoring to ensure invasive management and native vegetation establishment goals are reached.

Deliverables:

- a) Habitat Restoration Oversight: ERC will conduct regular site visits to review the status of the project implementation – specific activities will be defined in the finalized HRP. Items and actions may include but are not limited to a review of the ongoing management activities, a walkthrough of the site for general observations, verifying project plans are being implemented as designed, review of herbicide logs, and reviewing if project is following anticipated schedule. A report of the current status of the project will be provided at an interval to be determined during the creation of the HRP and monitoring plan.
- b) Habitat Restoration Monitoring: ERC will develop and implement a monitoring plan to ensure invasive management and native vegetation establishment goals are reached. This deliverable is a part of their current contract for LMRP 2, 3, & 6 Habitat Restoration Plan Design.



**Project Budget:**

Continued Habitat Restoration Implementation: LMRP Sections 4 & 5 - Upland				
Budget Detail	Year 1 Jan 1-Dec 31, 2024	Year 2 Jan 1-Dec 31, 2025	Year 3 Jan 1-Dec 31, 2026	Total Project Cost
MCP Dept. of Administrative Services (DAS) – FTE (129 hours)	\$2,365.00	\$2,365.00	\$2,365.00	\$7,095.00
Fringe Benefits DAS Staff (110%)	\$2,601.50	\$2,601.50	\$2,601.50	\$7,804.50
Contractual – ERC	\$565,109.17	\$465,109.16	\$175,082.17	\$1,205,300.50
Contractual – Stantec	\$26,600.00	\$26,600.00	\$26,600.00	\$79,800.00
Project Administration	--	--	--	--
Subtotal Direct	\$596,675.67	\$496,675.66	\$206,648.67	\$1,300,000.00
Indirect (%)	--	--	--	--
<b>Subtotal Project Costs</b>	<b>\$596,675.67</b>	<b>\$496,675.66</b>	<b>\$206,648.67</b>	<b>\$1,300,000.00</b>
Habitat Restoration Plan: LMRP Section 1 – Upland				
Budget Detail	Year 1 Aug-Dec 31, 2023	Year 2 Jan 1-Dec 31 2024	Year 3 Jan 1-Dec, 2025	Total Project Cost
MCP Natural Areas Staff (170 hours)	\$636.00	\$1,990.00	\$2,414.00	\$5,040.00
Fringe Benefits MCP Natural Areas Staff (23%)	\$146.28	\$457.70	<b>\$555.22</b>	\$1,159.20
MCP Dept. of Administrative Services (DAS) – FTE (20 hours)	\$0	\$1,160.00	\$1,160.00	\$2,320.00
Fringe Benefits DAS Staff (110%)	\$0	\$1,276.00	\$1,276.00	\$2,552.00
Contractual – Design Consultant	\$0	\$124,558.80	\$64,370.00	\$188,928.80
Project Administration	--	--	--	--
Subtotal Direct	\$782.28	\$129,442.50	\$69,775.22	\$200,000.00
Indirect (%)	--	--	--	--
<b>Subtotal Project Costs</b>	<b>\$782.28</b>	<b>\$129,442.50</b>	<b>\$69,775.22</b>	<b>\$200,000.00</b>
Habitat Restoration Implementation: LMRP Sections 2, 3, & 6 - Upland				
Budget Detail	Year 1 Jan 1-Dec 31, 2024	Year 2 Jan 1-Dec 31, 2025	Year 3 Jan 1-Dec 31, 2026	Total Project Cost
MCP Natural Areas Staff (80 hours)	\$860.00	\$575.00	\$575.00	\$2,010.00
Fringe Benefits MCP Natural Areas Staff (23%)	\$197.80	\$132.25	\$132.25	\$462.30
MCP Dept. of Administrative Services (DAS) – FTE (135 hours)	\$2,785.00	\$475.00	\$475.00	\$3,735.00
Fringe Benefits DAS Staff (110%)	\$3,063.50	\$522.50	\$522.50	\$4,108.50
Contractual – Habitat Restoration Contractor	\$483,072.50	\$488,193.70	\$486,355.50	\$1,457,621.70

DRAFT  
7/21/2023

Contractual – Oversight & Monitoring by Design Consultant	\$10,687.50	\$10,687.50	\$10,687.50	\$32,062.50
Project Administration	--	--	--	--
Subtotal Direct	\$500,666.30	\$500,585.95	\$498,747.75	\$1,500,000.00
Indirect (%)	--	--	--	--
<b>Subtotal Project Costs</b>	<b>\$500,666.30</b>	<b>\$500,585.95</b>	<b>\$498,747.75</b>	<b>\$1,500,000.00</b>
<b>Combined Budget for LMRP Design and Restoration Projects</b>				
Total Direct	\$1,123,863.77	\$1,101,486.11	\$774,650.12	\$3,000,000
<b>Total Project Costs</b>	<b>\$1,123,863.77</b>	<b>\$1,101,486.11</b>	<b>\$774,650.12</b>	<b>\$3,000,000</b>

**Budget Detail:** The above budget table provides itemized detail on the project budget. For each project this includes:

*Continued Habitat Restoration Implementation: LMRP Sections 4 & 5 - upland*

- Implementation of restoration activities by contractor;
- Project oversight by the design consultant;
- Administrative costs for Contract management by County Dept. of Admin.

*Habitat Restoration Plan: LMRP Section 1 - upland*

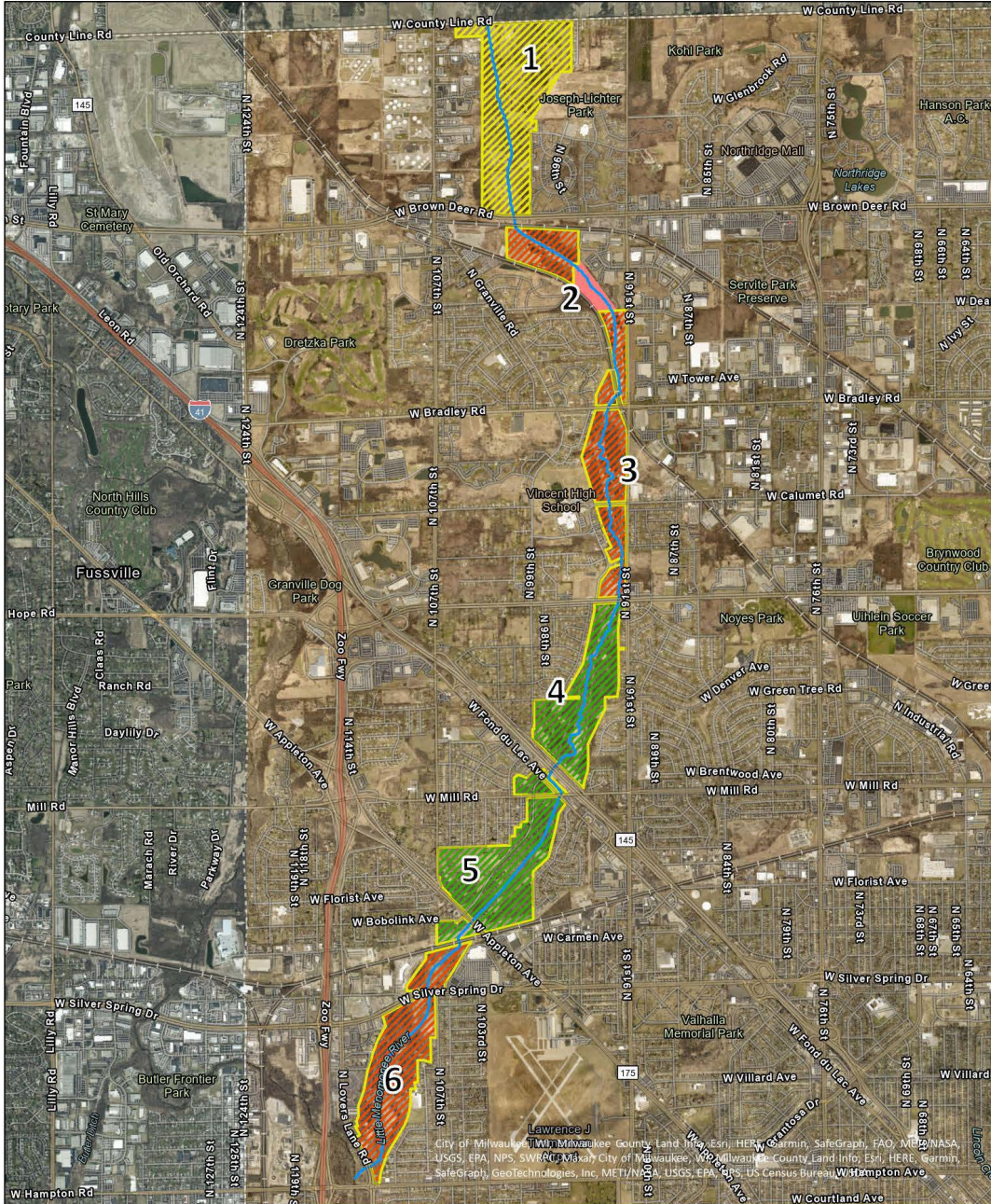
- MCP Personnel Hours for HRP review and development;
- County Dept. of Admin Services personnel hours for review of HRP;
- Cost for Design Consultant development of HRP.

*Habitat Restoration Implementation: LMRP Sections 2, 3, & 6 - upland*

- Implementation of restoration activities by contractor;
- Project oversight by the design consultant;
- Administrative costs for creation of Habitat Restoration Bid Package, Advertisement, and Contract management by County Dept. of Admin.

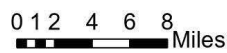
**References:**

LMRP ERMP  
HRPs



### Little Menomonee River Parkway Project Area Map

- Little Menomonee River
- Little Menomonee River Parkway**
- Section 1
- Sections 2, 3, & 6
- Section 2 - City of Milwaukee Parcel
- Section 4 & 5



1/9/23

