

Milwaukee County COVID-19 vaccine data summary

Milwaukee County COVID-19 Epidemiology Intel Team

This report was updated on February 11, 2022 and includes data through February 7, 2022. Note that data for recent weeks may be under-reported due to lags in data entry. This report includes data on primary vaccinations and booster doses (second dose following Johnson & Johnson primary vaccination or third dose following Pfizer or Moderna primary vaccination series).

Milwaukee County COVID-19 Vaccination Totals December 15, 2020 - February 7, 2022			
	Milwaukee County	City of Milwaukee	Suburbs
Total primary vaccine doses administered	1,136,049	642,652	493,397
Pfizer	696,645	417,170	279,475
Pfizer Age 5-11	45,209	21,594	23,615
Moderna	359,707	183,253	176,454
Johnson & Johnson	34,488	20,635	13,853
Total vaccine doses administered (including boosters)	1,416,080	782,553	633,527
Pfizer	865,365	507,103	358,262
Pfizer Age 5-11	45,209	21,594	23,615
Moderna	468,443	231,895	236,548
Johnson & Johnson	37,063	21,961	15,102
*Total individuals with one or more doses	608,808	347,773	261,035
Pfizer	362,278	218,564	143,714
Pfizer Age 5-11	25,616	12,865	12,751
Moderna	186,426	95,709	90,717
Johnson & Johnson	34,488	20,635	13,853
*Total individuals completely vaccinated	561,729	315,514	246,215
Pfizer	334,150	198,414	135,736
Pfizer Age 5-11	19,729	8,802	10,927
Moderna	173,362	87,663	85,699
Johnson & Johnson	34,488	20,635	13,853
*Total individuals boosted	280,031	139,901	140,130
Pfizer	165,459	86,453	79,006
Pfizer Age 5-11	1	0	1
Moderna	101,277	46,215	55,062
Johnson & Johnson	13,294	7,233	6,061
*Individuals are grouped by the first vaccine product received. Note a small number of people received a different vaccine product for their second dose in a series			

**Percentage of Population Vaccinated
December 15, 2020 - February 7, 2022**

	Overall	Ages 5+	Ages 12+	Ages 16+
Milwaukee County				
*Population	954,209	887,487	796,322	747,409
Received one or more doses	63.8%	68.6%	73.2%	74.2%
Completely vaccinated	58.9%	63.3%	68.1%	69.0%
City of Milwaukee				
*Population	596,886	551,401	489,445	456,809
Received one or more doses	58.3%	63.1%	68.4%	69.7%
Completely vaccinated	52.9%	57.2%	62.7%	63.9%
Milwaukee County Suburbs				
*Population	357,323	336,086	306,877	290,600
Received one or more doses	73.1%	77.7%	80.9%	81.3%
Completely vaccinated	68.9%	73.3%	76.7%	77.1%

***Population estimates from 2018 US Census American Community Survey**

**Percentage of Population Boosted
December 15, 2020 - February 7, 2022**

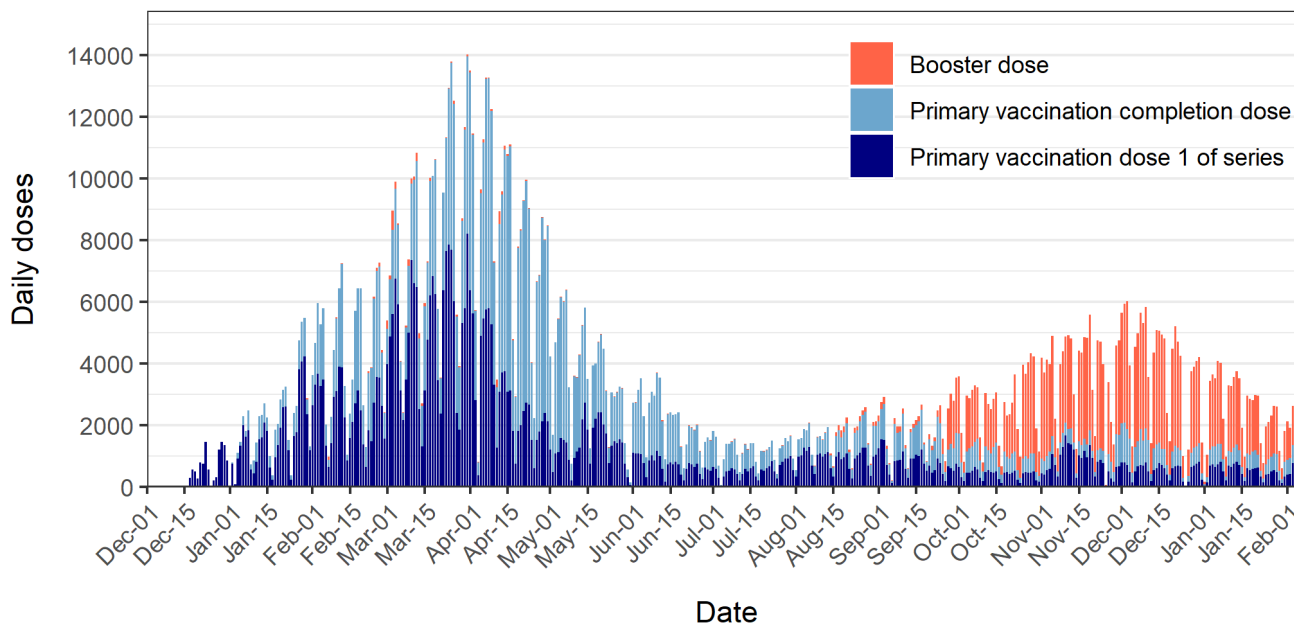
	Overall	**Booster eligible
Milwaukee County		
*Population	954,209	482,122
Received booster dose	29.3%	58.0%
City of Milwaukee		
*Population	596,886	264,952
Received booster dose	23.4%	52.7%
Milwaukee County Suburbs		
*Population	357,323	217,170
Received booster dose	39.2%	64.5%

***Overall population estimates from 2018 US Census American Community Survey**
****Booster eligible population is aged 12+ with complete primary vaccination prior to September 10, 2021 for Pfizer or Moderna series, or prior to December 9, 2021 for Johnson & Johnson**

Daily COVID-19 doses administered to Milwaukee County residents

Figure 1 shows daily total COVID-19 vaccine doses administered to Milwaukee County residents. A total of 1,416,080 doses (including boosters) have been administered from December 15, 2020 through February 7, 2022. The dark blue color represents the first dose in a series (Pfizer or Moderna). The light blue color indicates a completion dose (first dose of Johnson & Johnson or second dose of Pfizer or Moderna). The orange color indicates a booster dose (second dose following Johnson & Johnson or third dose following Pfizer or Moderna series).

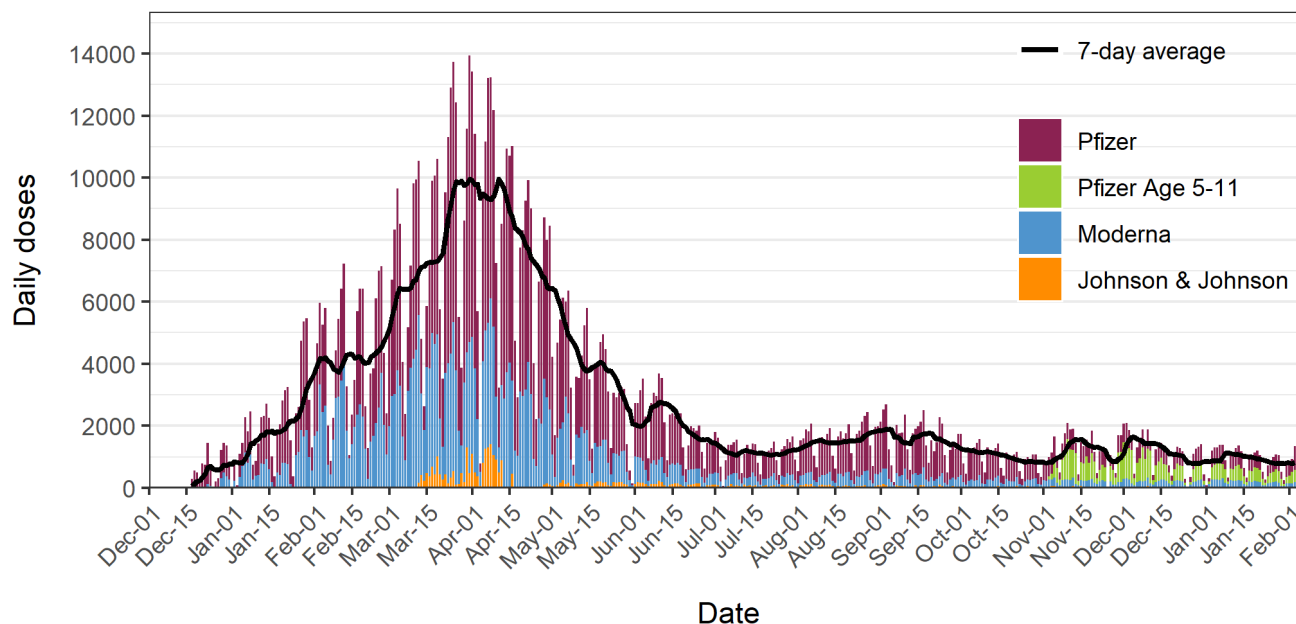
Figure 1: Daily COVID-19 vaccine doses administered to Milwaukee Co. residents



Data source: Wisconsin Immunization Registry (WIR)
Created by the Milwaukee County COVID-19 Epidemiology Intel Team

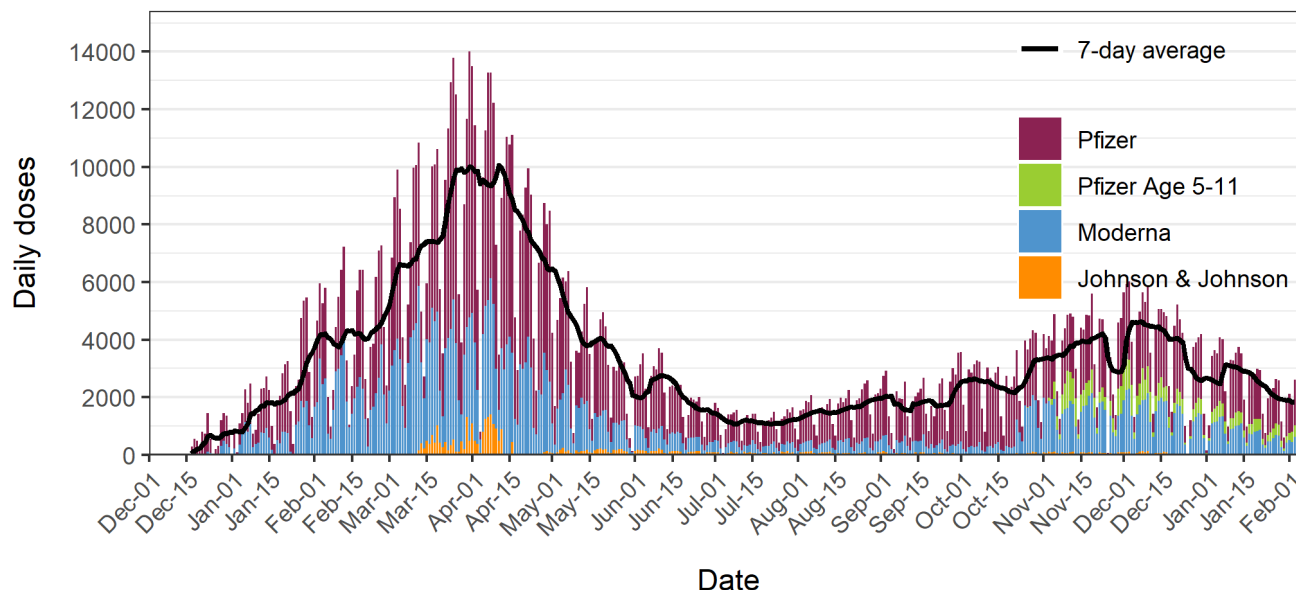
Figures 2a and 2b show daily COVID-19 vaccine doses administered to Milwaukee County residents; **Figure 2a** includes primary vaccination doses only, and **Figure 2b** shows all doses including boosters. The overlaid black line shows the 7-day average of daily doses and the bars are colored by vaccine: Pfizer (red), Pfizer Age 5-11 (green), Moderna (blue), and Johnson & Johnson (orange). Daily primary vaccination doses peaked in late March to early April 2021 and have since declined until mid-summer when slight increases occurred in tandem with increasing cases thought to be driven by the delta variant. An increase in primary vaccination doses is observed in the second week of November 2021, driven by new eligibility among ages 5-11.

Figure 2a: Daily COVID-19 primary vaccination doses administered to Milwaukee Co. residents



Data source: Wisconsin Immunization Registry (WIR)
Created by the Milwaukee County COVID-19 Epidemiology Intel Team

Figure 2b: Daily COVID-19 vaccination doses administered to Milwaukee Co. residents (includes booster doses)

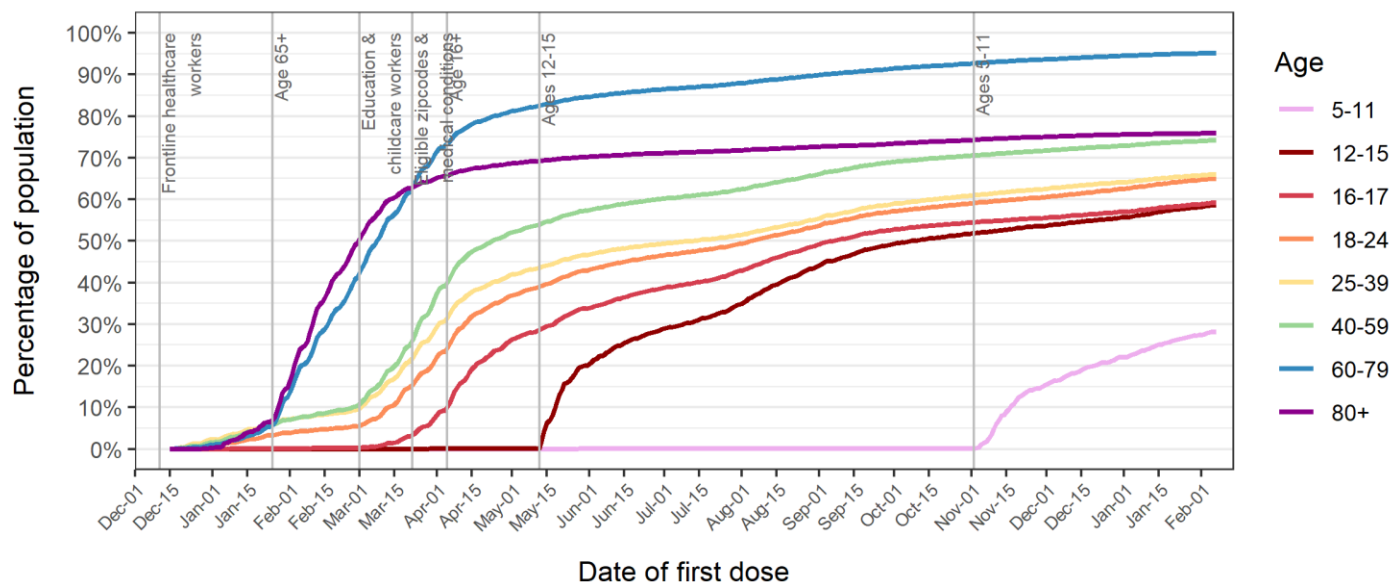


Data source: Wisconsin Immunization Registry (WIR)
Created by the Milwaukee County COVID-19 Epidemiology Intel Team

Percentages of Milwaukee County residents partially and completely vaccinated by age group

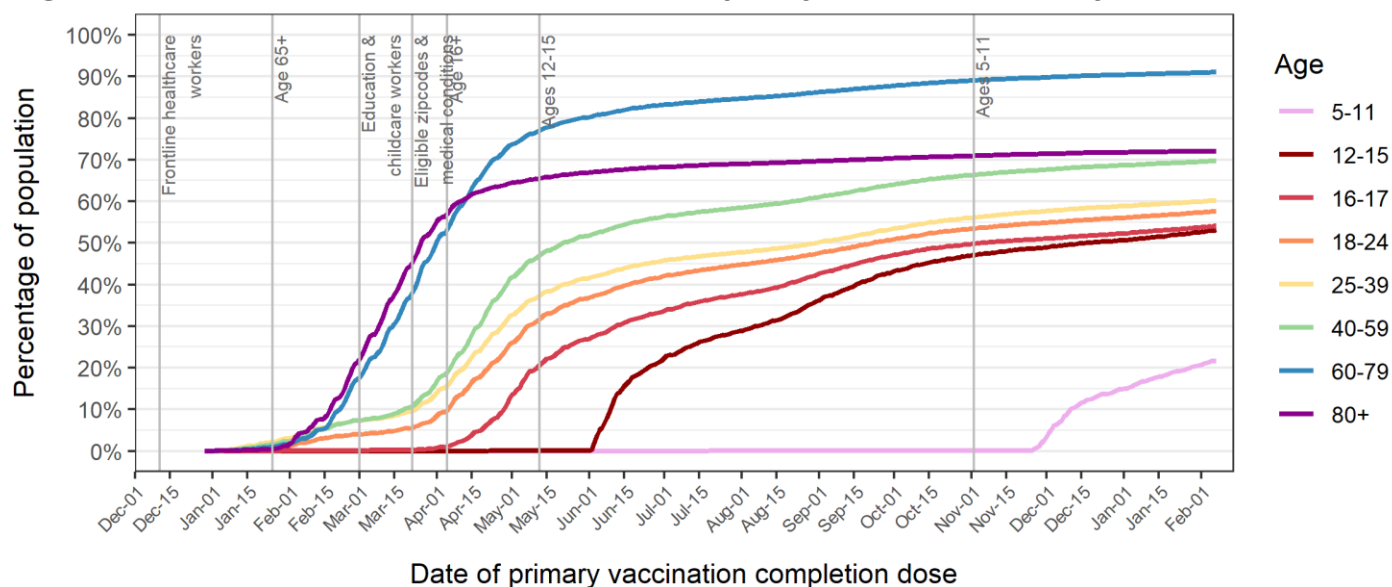
Figure 3 shows the percentage over time of Milwaukee County residents who received at least one dose of any COVID-19 vaccine by age group. **Figure 4** shows the percentage over time of Milwaukee County residents who are completely vaccinated with any COVID-19 vaccine by age group. The vertical lines show changes in vaccine eligibility in Milwaukee County.

Figure 3: Percent of Milwaukee Co. residents with at least one dose of any COVID-19 vaccine



Data source: Wisconsin Immunization Registry (WIR)
Created by the Milwaukee County COVID-19 Epidemiology Intel Team

Figure 4: Percent of Milwaukee Co. residents completely vaccinated with any COVID-19 vaccine

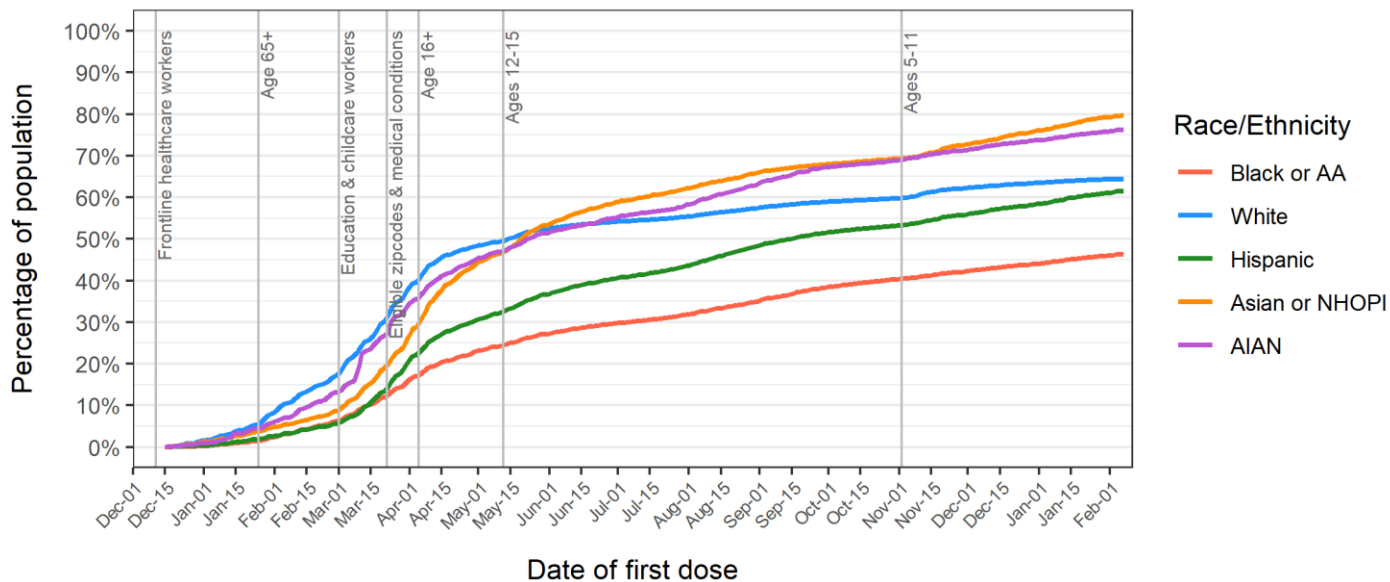


Data source: Wisconsin Immunization Registry (WIR)
Created by the Milwaukee County COVID-19 Epidemiology Intel Team

Proportions of Milwaukee County residents partially and completely vaccinated by race/ethnicity group

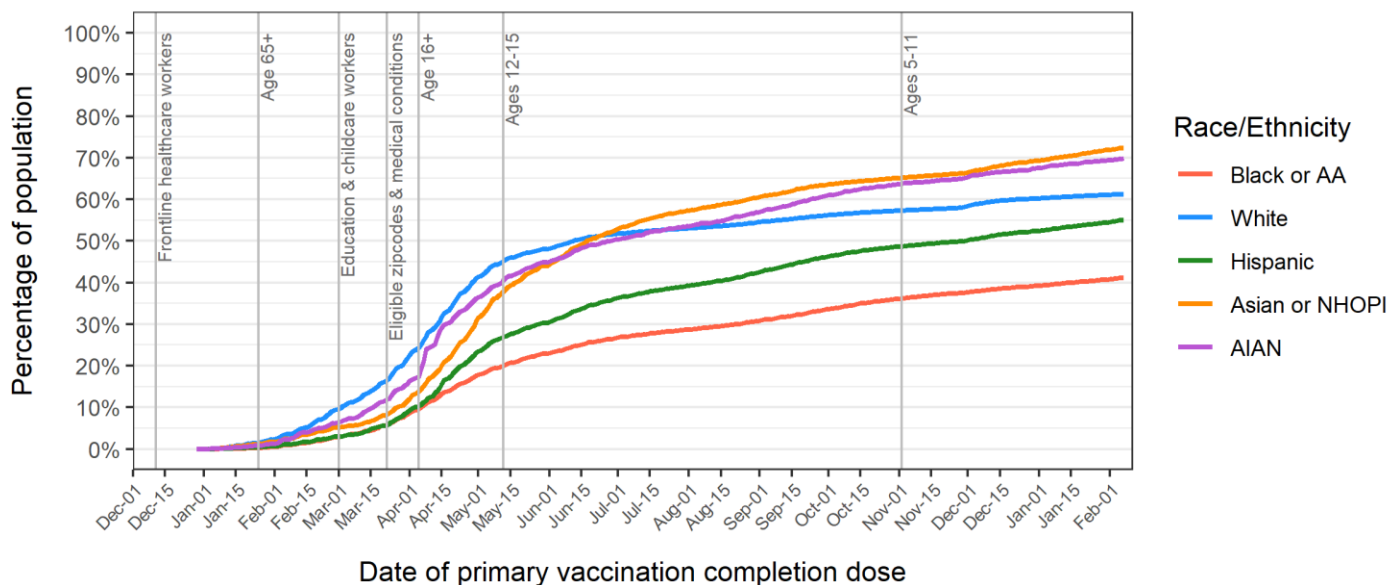
Figure 5 shows the percentage over time of Milwaukee County residents who received at least one dose of any COVID-19 vaccine by race/ethnicity group. **Figure 6** shows the percentage over time of Milwaukee County residents who are completely vaccinated with any COVID-19 vaccine by race/ethnicity group. The vertical lines show changes in vaccine eligibility in Milwaukee County.

Figure 5: Percent of Milwaukee Co. residents with at least one dose of any COVID-19 vaccine



Data source: Wisconsin Immunization Registry (WIR)
Created by the Milwaukee County COVID-19 Epidemiology Intel Team

Figure 6: Percent of Milwaukee Co. residents completely vaccinated with any COVID-19 vaccine



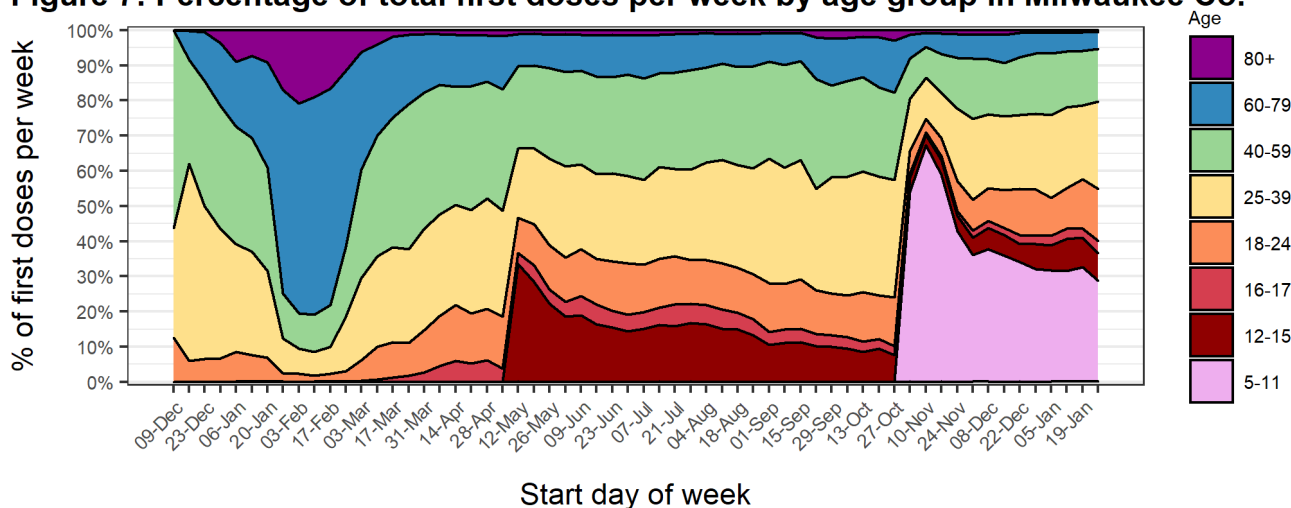
Data source: Wisconsin Immunization Registry (WIR)
Created by the Milwaukee County COVID-19 Epidemiology Intel Team

Percentages of first doses of COVID-19 vaccine administered to Milwaukee County residents by age and race/ethnicity groups

Figure 7 shows the percentage of first doses of COVID-19 vaccine administered per week to Milwaukee County residents by age group. After vaccines first became available to healthcare personnel, middle-aged groups (25-59) were the majority of new vaccinees. After eligibility opened up to ages 65+, the oldest two age groups became the majority. The younger age groups (< 60) became the majority of people newly vaccinated since eligibility opened up to education staff on March 1st. With the eligibility of children aged 12+, we observed a sharp increase in vaccination for children. A similar increase was observed with the new eligibility of children ages 5-11.

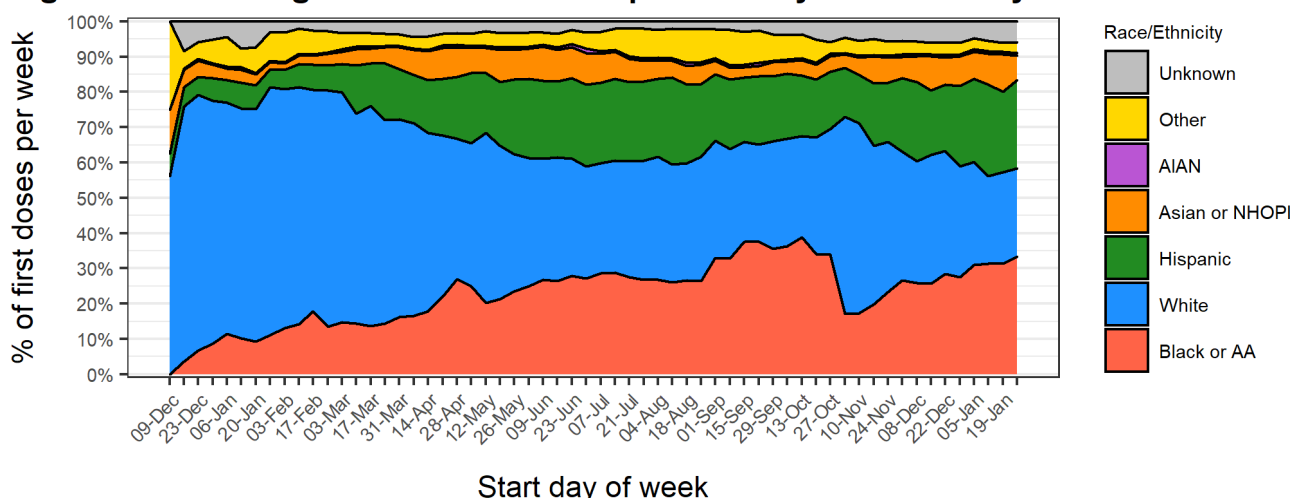
Figure 8 shows the percentage of first doses of COVID-19 vaccine administered per week to Milwaukee County residents by race/ethnicity. Non-Hispanic Whites were the majority of newly vaccinated individuals for many months, however Black/AA and Hispanic groups have become an increasing proportion of the newly vaccinated over time.

Figure 7: Percentage of total first doses per week by age group in Milwaukee Co.



Data source: Wisconsin Immunization Registry (WIR)
Created by the Milwaukee County COVID-19 Epidemiology Intel Team

Figure 8: Percentage of total first doses per week by race/ethnicity in Milwaukee Co.



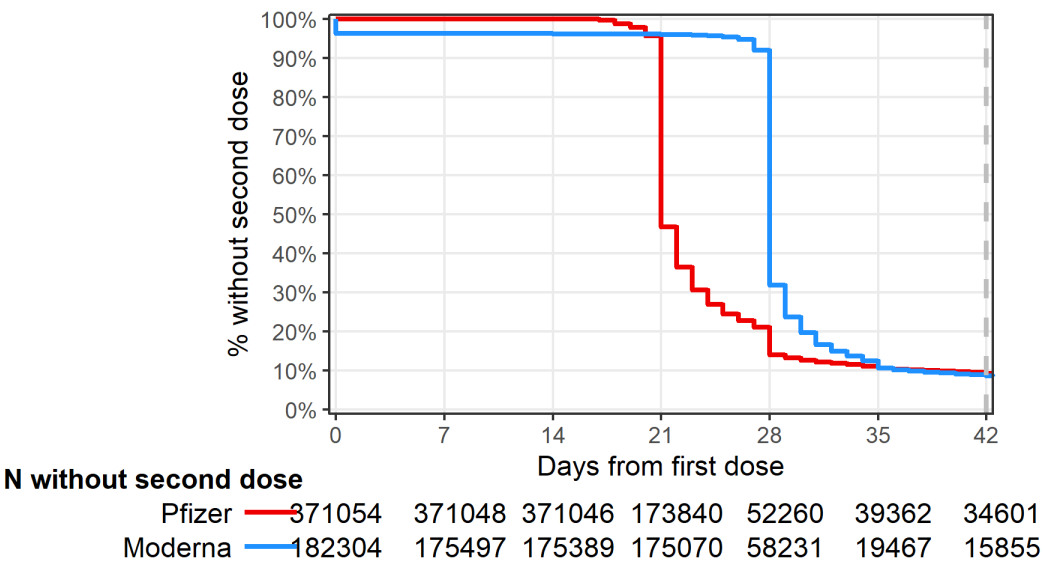
Data source: Wisconsin Immunization Registry (WIR)
Created by the Milwaukee County COVID-19 Epidemiology Intel Team

Completion of primary immunization series among Milwaukee County residents who received at least one dose of Pfizer or Moderna vaccines

Figure 9 describes the timing between primary vaccination doses for Milwaukee County residents who received Pfizer or Moderna vaccines. This graph includes data for residents who received their first dose of Pfizer or Moderna at least 42 days ago (prior to December 26, 2021). The recommended interval for receiving the second dose is 21 days for the Pfizer vaccine and 28 days for the Moderna vaccine; the second dose is considered valid if administered 4 days prior to the recommended interval and up to 42 days following the first dose for each vaccine.

Fully 90.9% of all residents who received their first dose of Pfizer prior to December 26, 2021 received their second dose within 42 days, indicating very strong completion within guidelines for those receiving a first dose.

Figure 9: Vaccine series completion among Milwaukee Co. residents receiving Pfizer or Moderna



Data source: Wisconsin Immunization Registry (WIR)
Created by the Milwaukee County COVID-19 Epidemiology Intel Team

Summary of vaccine series completion and booster rates among vaccinated Milwaukee County residents

Table 1 summarizes the rates of primary vaccination series completion and booster uptake by groups based on first vaccine product received, age, sex, and race/ethnicity. The first column, rates of primary vaccination series completion, includes data for residents who received a first dose of Pfizer or Moderna at least 42 days ago; 42 days is the maximum recommended period for receiving the second dose. The second column, rates of booster uptake, includes data for booster eligible residents only; booster eligibility criteria are currently age 12 or older, with one dose of Johnson & Johnson vaccine at least 2 months ago or completion of Pfizer or Moderna primary vaccination series at least 5 months ago. While vaccine series completion rates are high and vary only slightly among groups, receipt of booster doses among booster eligible individuals varies significantly by vaccine product, age, and race/ethnicity with slight variation by sex.

Characteristic	Percent with second dose within 42 days among Pfizer and Moderna recipients ¹	*Percent boosted among eligible ¹
First vaccine received		
Pfizer	336,434 / 371,033 (90.7%)	165,198 / 288,569 (57.2%)
Moderna	166,449 / 182,304 (91.3%)	101,191 / 159,762 (63.3%)
Johnson & Johnson		13,294 / 33,791 (39.3%)
Age		
5-11	16,476 / 18,963 (86.9%)	
12-15	24,369 / 26,985 (90.3%)	5,452 / 18,861 (28.9%)
16-17	12,368 / 13,755 (89.9%)	3,963 / 10,711 (37.0%)
18-24	44,931 / 51,893 (86.6%)	16,876 / 44,363 (38.0%)
25-39	118,498 / 132,791 (89.2%)	57,383 / 115,379 (49.7%)
40-59	141,273 / 154,097 (91.7%)	83,960 / 144,053 (58.3%)
60-79	120,782 / 128,837 (93.7%)	93,623 / 124,076 (75.5%)
80+	24,186 / 26,016 (93.0%)	18,426 / 24,679 (74.7%)
Sex		
Female	271,052 / 296,876 (91.3%)	153,210 / 256,552 (59.7%)
Male	230,655 / 255,025 (90.4%)	125,972 / 224,347 (56.2%)
Unknown	1,176 / 1,436 (81.9%)	501 / 1,223 (41.0%)
Race/Ethnicity		
Black or AA	87,846 / 101,447 (86.6%)	39,057 / 79,544 (49.1%)
White	276,240 / 295,436 (93.5%)	181,412 / 272,899 (66.5%)
Hispanic	66,777 / 75,650 (88.3%)	25,907 / 61,860 (41.9%)
Asian or NHOPI	26,954 / 29,629 (91.0%)	11,913 / 25,050 (47.6%)
AIAN	2,875 / 3,207 (89.6%)	1,470 / 2,739 (53.7%)
Other	25,862 / 28,828 (89.7%)	13,384 / 23,286 (57.5%)
Unknown	16,329 / 19,140 (85.3%)	6,540 / 16,744 (39.1%)

¹n / N (%)

*Booster eligible population is aged 12+ with complete primary vaccination prior to September 10, 2021 for Pfizer or Moderna series, or prior to December 9, 2021 for Johnson & Johnson

Data Sources & Acknowledgments

This report was created by faculty and staff in the Medical College of Wisconsin (MCW) Institute for Health and Equity (IHE) in partnership with representatives from local health departments and faculty from the University of Wisconsin-Milwaukee Zilber School of Public Health. Data sources include the Wisconsin Immunization Registry (WIR) and the US Census Bureau.

Contact Information

For additional questions on this report, please contact Darren Rausch, Health Officer/Director, Greenfield Health Department, and Lead, Milwaukee County COVID-19 Epidemiology Intel Team:
Darren.Rausch@greenfieldwi.us or (414) 329-5275.