

Milwaukee County COVID-19 vaccine data summary

Milwaukee County COVID-19 Epidemiology Intel Team

This report was updated on December 2, 2021 and includes data through November 30, 2021. Note that data for recent weeks may be under-reported due to lags in data entry. This report includes data on primary vaccinations and booster doses (second dose following Johnson & Johnson primary vaccination or third dose following Pfizer or Moderna primary vaccination series).

Milwaukee County COVID-19 Vaccination Totals December 15, 2020 - November 30, 2021			
	Milwaukee County	City of Milwaukee	Suburbs
Total primary vaccine doses administered	1,055,365	593,282	462,083
Pfizer	660,792	392,151	268,641
Pfizer Age 5-11	13,723	5,126	8,597
Moderna	347,531	176,125	171,406
Johnson & Johnson	33,319	19,880	13,439
Total vaccine doses administered (including boosters)	1,184,055	651,666	532,389
Pfizer	742,103	431,409	310,694
Pfizer Age 5-11	13,723	5,126	8,597
Moderna	393,758	194,705	199,053
Johnson & Johnson	34,471	20,426	14,045
*Total individuals with one or more doses	568,459	321,211	247,248
Pfizer	342,943	205,008	137,935
Pfizer Age 5-11	12,869	4,868	8,001
Moderna	179,328	91,455	87,873
Johnson & Johnson	33,319	19,880	13,439
*Total individuals completely vaccinated	520,225	291,951	228,274
Pfizer	317,765	187,075	130,690
Pfizer Age 5-11	859	261	598
Moderna	168,282	84,735	83,547
Johnson & Johnson	33,319	19,880	13,439
*Total individuals boosted	128,690	58,384	70,306
Pfizer	79,546	37,974	41,572
Pfizer Age 5-11	0	0	0
Moderna	44,396	18,202	26,194
Johnson & Johnson	4,748	2,208	2,540
*Individuals are grouped by the first vaccine product received. Note a small number of people received a different vaccine product for their second dose in a series			

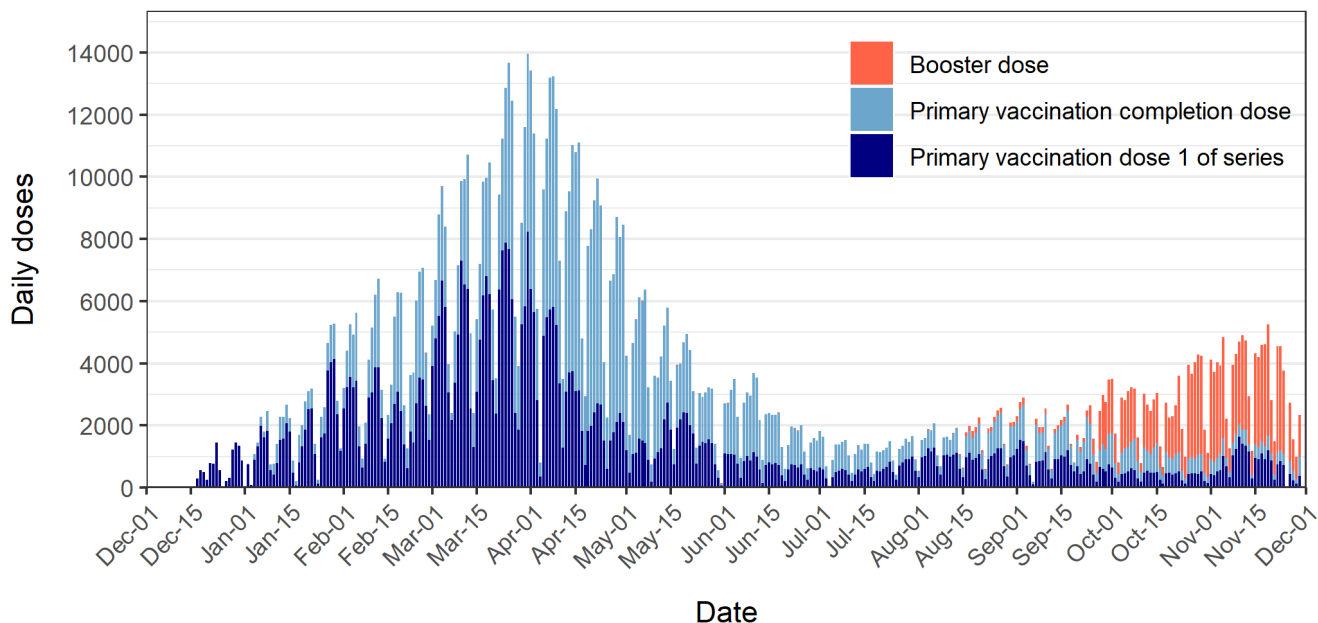
**Percentage of Population Vaccinated
December 15, 2020 - November 30, 2021**

	Overall	Ages 5+	Ages 12+	Ages 16+
Milwaukee County				
*Population	954,209	887,487	796,322	747,409
Received one or more doses	59.6%	64.1%	69.8%	70.8%
Completely vaccinated	54.5%	58.6%	65.2%	66.3%
City of Milwaukee				
*Population	596,886	551,401	489,445	456,809
Received one or more doses	53.8%	58.3%	64.6%	66.0%
Completely vaccinated	48.9%	52.9%	59.6%	61.0%
Milwaukee County Suburbs				
*Population	357,323	336,086	306,877	290,600
Received one or more doses	69.2%	73.6%	77.9%	78.4%
Completely vaccinated	63.9%	67.9%	74.2%	74.7%
*Population estimates from 2018 US Census American Community Survey				

Daily COVID-19 doses administered to Milwaukee County residents

Figure 1 shows daily total COVID-19 vaccine doses administered to Milwaukee County residents. A total of 1,184,055 doses (including boosters) have been administered from December 15, 2020 through November 30, 2021. The dark blue color represents the first dose in a series (Pfizer or Moderna). The light blue color indicates a completion dose (first dose of Johnson & Johnson or second dose of Pfizer or Moderna). The orange color indicates a booster dose (second dose following Johnson & Johnson or third dose following Pfizer or Moderna series).

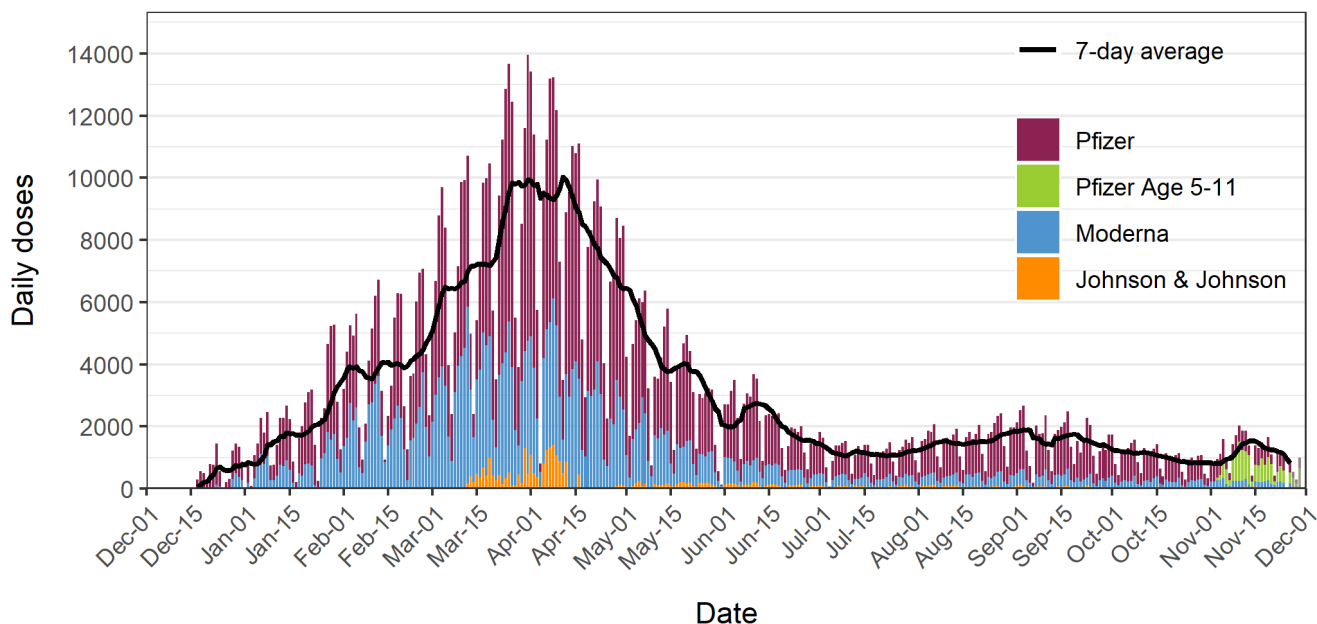
Figure 1: Daily COVID-19 vaccine doses administered to Milwaukee Co. residents



Data source: Wisconsin Immunization Registry (WIR)
Created by the Milwaukee County COVID-19 Epidemiology Intel Team

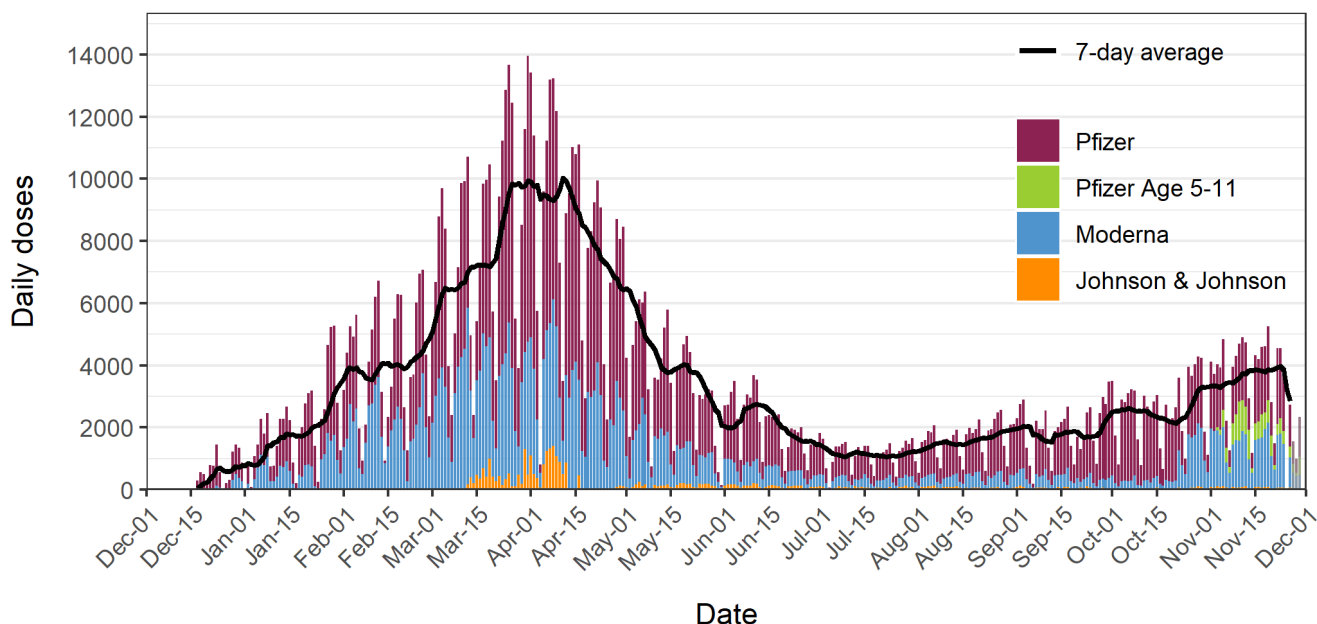
Figures 2a and 2b show daily COVID-19 vaccine doses administered to Milwaukee County residents; **Figure 2a** includes primary vaccination doses only, and **Figure 2b** shows all doses including boosters. The overlaid black line shows the 7-day average of daily doses and the bars are colored by vaccine: Pfizer (red), Pfizer Age 5-11 (green), Moderna (blue), and Johnson & Johnson (orange). Daily primary vaccination doses peaked in late March to early April 2021 and have since declined until mid-summer when slight increases occurred in tandem with increasing cases thought to be driven by the delta variant. An increase in primary vaccination doses is observed in the second week of November 2021, driven by new eligibility among ages 5-11.

Figure 2a: Daily COVID-19 primary vaccination doses administered to Milwaukee Co. residents



Data source: Wisconsin Immunization Registry (WIR)
Created by the Milwaukee County COVID-19 Epidemiology Intel Team

Figure 2b: Daily COVID-19 vaccination doses administered to Milwaukee Co. residents

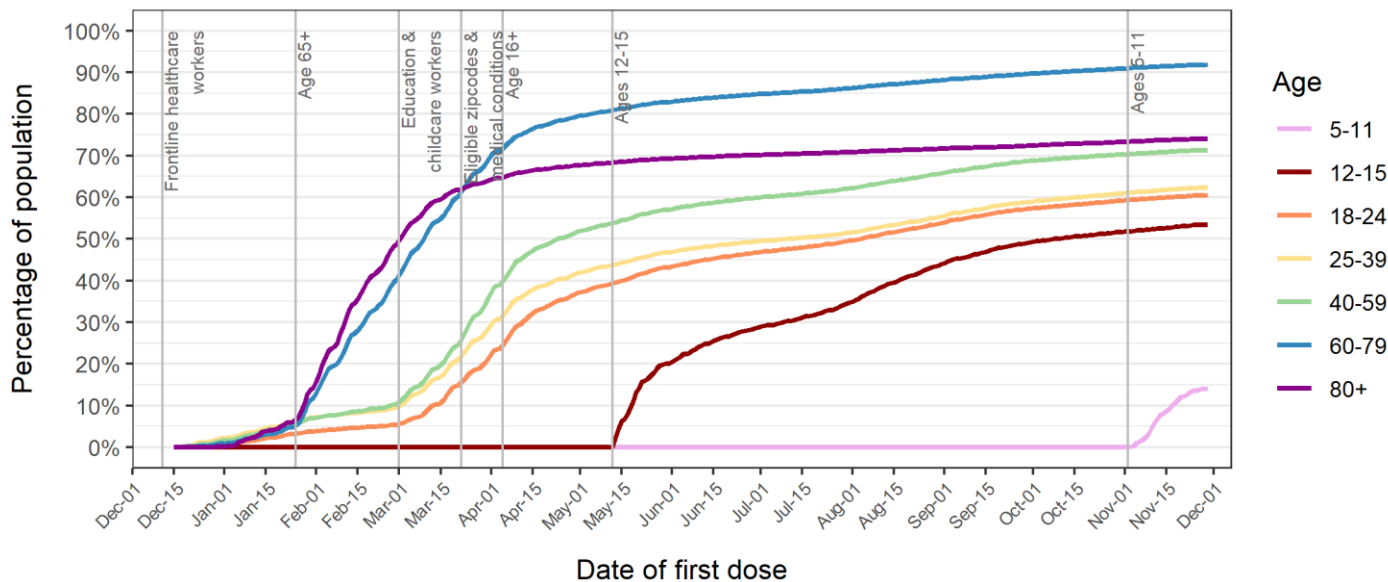


Data source: Wisconsin Immunization Registry (WIR)
Created by the Milwaukee County COVID-19 Epidemiology Intel Team

Percentages of Milwaukee County residents partially and completely vaccinated by age group

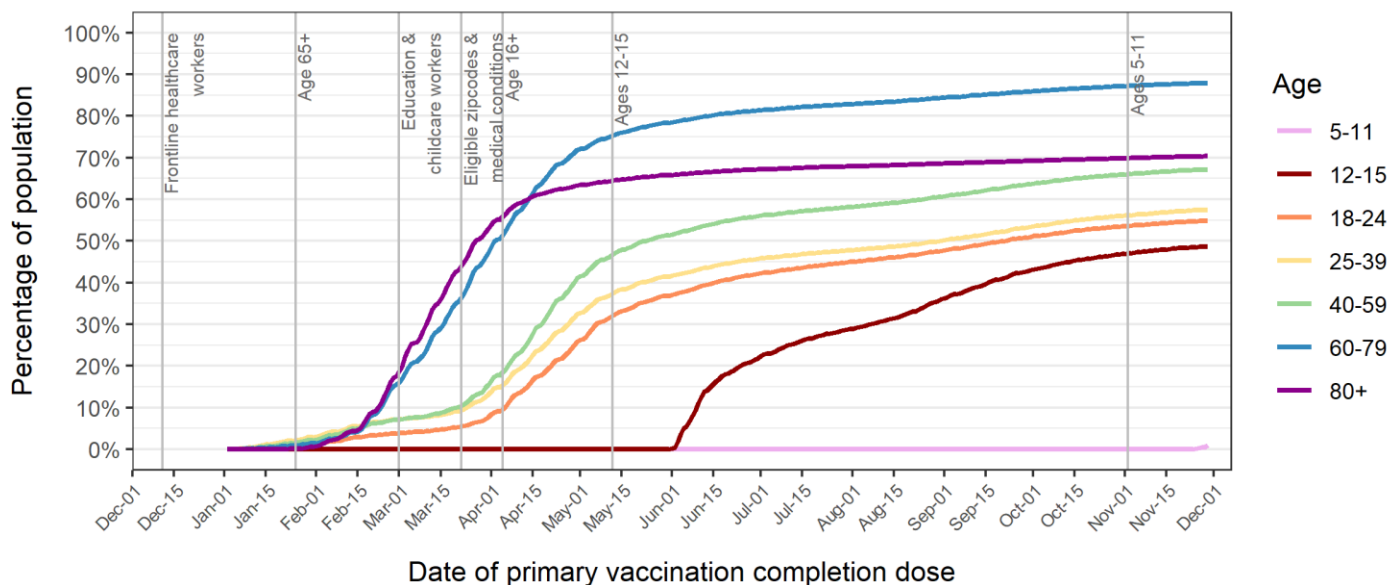
Figure 3 shows the percentage over time of Milwaukee County residents who received at least one dose of any COVID-19 vaccine by age group. **Figure 4** shows the percentage over time of Milwaukee County residents who are completely vaccinated with any COVID-19 vaccine by age group. The vertical lines show changes in vaccine eligibility in Milwaukee County.

Figure 3: Percent of Milwaukee Co. residents with at least one dose of any COVID-19 vaccine



Data source: Wisconsin Immunization Registry (WIR)
Created by the Milwaukee County COVID-19 Epidemiology Intel Team

Figure 4: Percent of Milwaukee Co. residents completely vaccinated with any COVID-19 vaccine

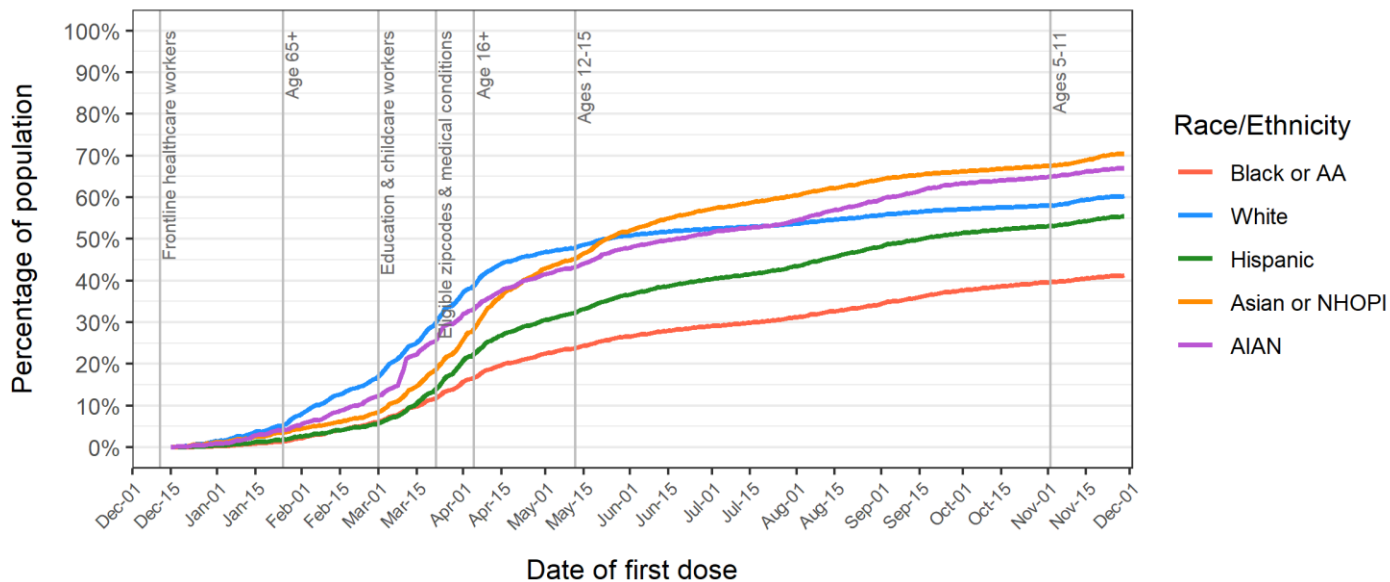


Data source: Wisconsin Immunization Registry (WIR)
Created by the Milwaukee County COVID-19 Epidemiology Intel Team

Proportions of Milwaukee County residents partially and completely vaccinated by race/ethnicity group

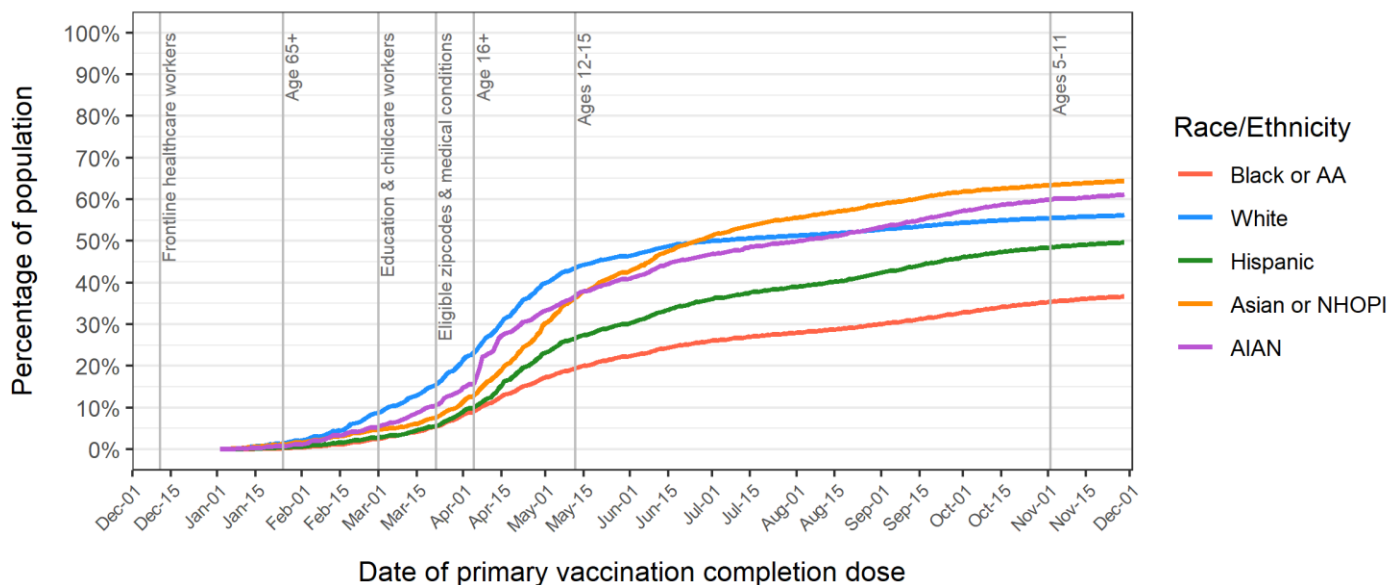
Figure 5 shows the percentage over time of Milwaukee County residents who received at least one dose of any COVID-19 vaccine by race/ethnicity group. **Figure 6** shows the percentage over time of Milwaukee County residents who are completely vaccinated with any COVID-19 vaccine by race/ethnicity group. The vertical lines show changes in vaccine eligibility in Milwaukee County.

Figure 5: Percent of Milwaukee Co. residents with at least one dose of any COVID-19 vaccine



Data source: Wisconsin Immunization Registry (WIR)
Created by the Milwaukee County COVID-19 Epidemiology Intel Team

Figure 6: Percent of Milwaukee Co. residents completely vaccinated with any COVID-19 vaccine



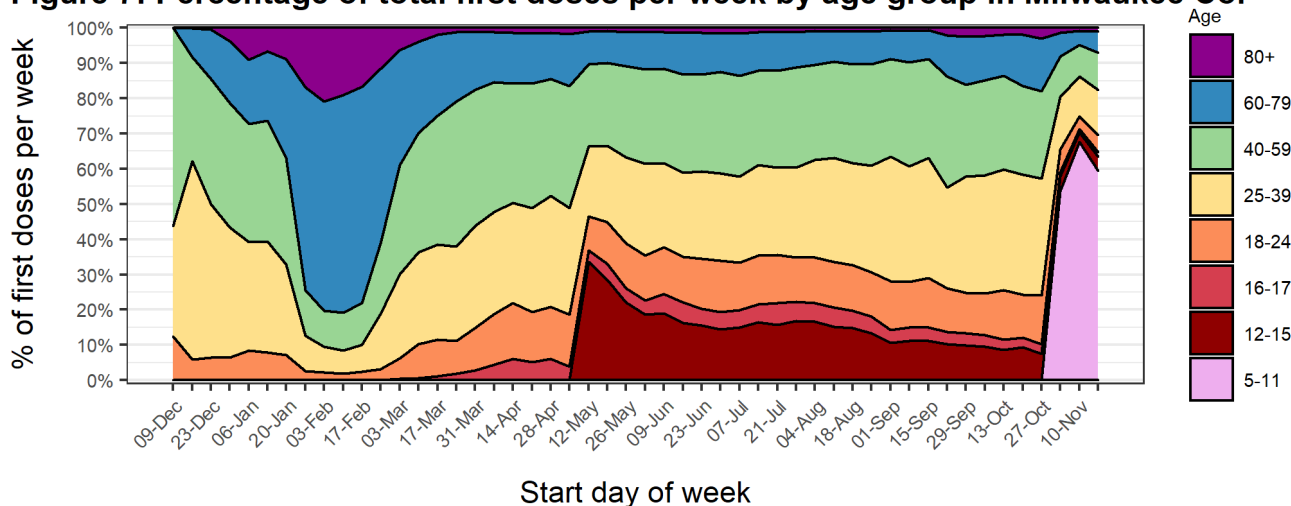
Data source: Wisconsin Immunization Registry (WIR)
Created by the Milwaukee County COVID-19 Epidemiology Intel Team

Percentages of first doses of COVID-19 vaccine administered to Milwaukee County residents by age and race/ethnicity groups

Figure 7 shows the percentage of first doses of COVID-19 vaccine administered per week to Milwaukee County residents by age group. After vaccines first became available to healthcare personnel, middle-aged groups (25-59) were the majority of new vaccinees. After eligibility opened up to ages 65+, the oldest two age groups became the majority. The younger age groups (< 60) became the majority of people newly vaccinated since eligibility opened up to education staff on March 1st. With the eligibility of children aged 12+, we observed a sharp increase in vaccination for children. A similar increase was observed with the new eligibility of children ages 5-11.

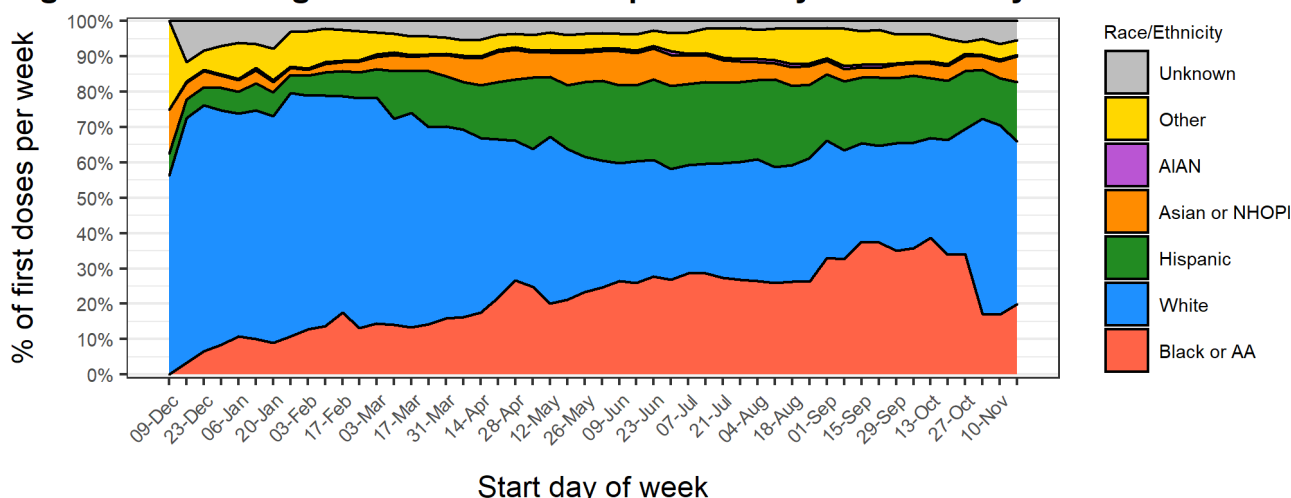
Figure 8 shows the percentage of first doses of COVID-19 vaccine administered per week to Milwaukee County residents by race/ethnicity. Non-Hispanic Whites were the majority of newly vaccinated individuals for many months, however Black/AA and Hispanic groups have become an increasing proportion of the newly vaccinated over time.

Figure 7: Percentage of total first doses per week by age group in Milwaukee Co.



Data source: Wisconsin Immunization Registry (WIR)
Created by the Milwaukee County COVID-19 Epidemiology Intel Team

Figure 8: Percentage of total first doses per week by race/ethnicity in Milwaukee Co.



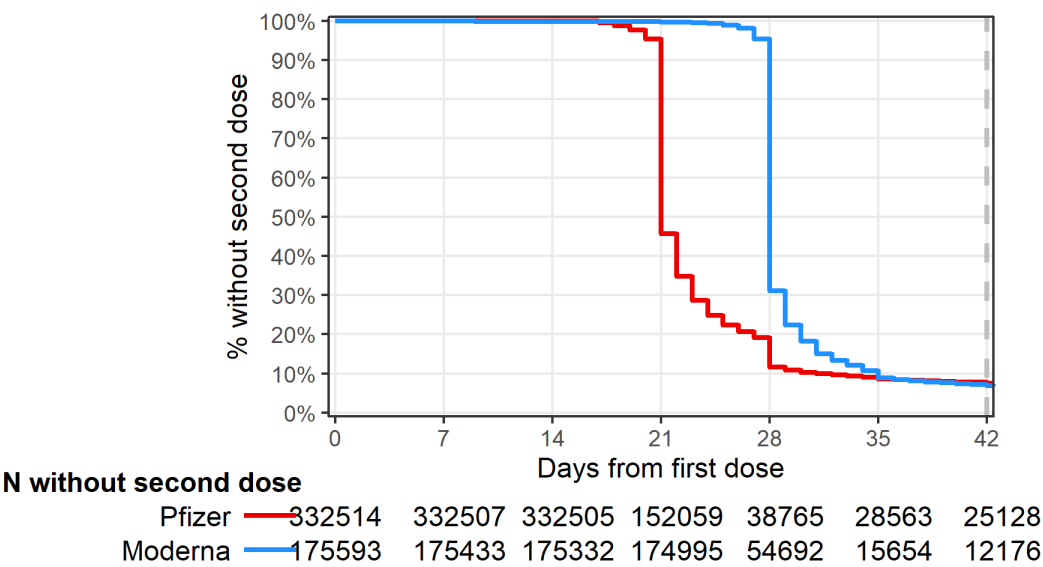
Data source: Wisconsin Immunization Registry (WIR)
Created by the Milwaukee County COVID-19 Epidemiology Intel Team

Completion of primary immunization series among Milwaukee County residents who received at least one dose of Pfizer or Moderna vaccines

Figure 9 describes the timing between primary vaccination doses for Milwaukee County residents who received Pfizer or Moderna vaccines. This graph includes data for residents who received their first dose of Pfizer or Moderna at least 42 days ago (prior to October 18, 2021). The recommended interval for receiving the second dose is 21 days for the Pfizer vaccine and 28 days for the Moderna vaccine; the second dose is considered valid if administered 4 days prior to the recommended interval and up to 42 days following the first dose for each vaccine.

Fully 92.7% of all residents who received their first dose of Pfizer prior to October 18, 2021 received their second dose within 42 days, indicating very strong completion within guidelines for those receiving a first dose.

Figure 9: Vaccine series completion among Milwaukee Co. residents receiving Pfizer or Moderna



Data source: Wisconsin Immunization Registry (WIR)
Created by the Milwaukee County COVID-19 Epidemiology Intel Team

Summary of vaccine series completion rates for Milwaukee County Pfizer and Moderna recipients

Table 1 summarizes the rates of primary vaccination series completion (Pfizer and Moderna 2-dose series) by groups based on vaccine received, age, sex, and race/ethnicity. This table includes data for residents who received their first dose of Pfizer or Moderna at least 42 days ago (prior to October 18, 2021); 42 days is the maximum recommended period for receiving the second dose. Variation across groups exists, but is relatively minor, with the exception of a small group with unknown sex.

Table 1: Summary of vaccine series completion rates for Milwaukee County Pfizer and Moderna recipients

Characteristic	Percent with second dose within 42 days ¹
Vaccine received	
Pfizer	307,363 / 332,481 (92.4%)
Moderna	163,417 / 175,593 (93.1%)
Age	
12-15	22,744 / 24,785 (91.8%)
16-17	11,853 / 13,042 (90.9%)
18-24	43,489 / 48,823 (89.1%)
25-39	114,490 / 125,160 (91.5%)
40-59	137,294 / 147,799 (92.9%)
60-79	117,218 / 123,348 (95.0%)
80+	23,692 / 25,117 (94.3%)
Sex	
Female	255,958 / 274,891 (93.1%)
Male	213,621 / 231,778 (92.2%)
Unknown	1,201 / 1,405 (85.5%)
Race/Ethnicity	
Black or AA	79,424 / 89,679 (88.6%)
White	255,005 / 268,663 (94.9%)
Hispanic	61,505 / 68,197 (90.2%)
Asian or NHOPI	24,456 / 26,258 (93.1%)
AIAN	2,548 / 2,809 (90.7%)
Other	30,880 / 33,574 (92.0%)
Unknown	16,962 / 18,894 (89.8%)

¹n / N (%)

Data Sources & Acknowledgments

This report was created by faculty and staff in the Medical College of Wisconsin (MCW) Institute for Health and Equity (IHE) in partnership with representatives from local health departments and faculty from the University of Wisconsin-Milwaukee Zilber School of Public Health. Data sources include the Wisconsin Immunization Registry (WIR) and the US Census Bureau.

Contact Information

For additional questions on this report, please contact Darren Rausch, Health Officer/Director, Greenfield Health Department, and Lead, Milwaukee County COVID-19 Epidemiology Intel Team:
Darren.Rausch@greenfieldwi.us or (414) 329-5275.