

Milwaukee County COVID-19 Data Summary

Milwaukee County COVID-19 Epidemiology Intel Team

This report was updated on October 7, 2021 and includes data through October 5, 2021. Note that case and testing data for recent weeks may be under-reported due to pending test results. Hospitalizations overall are thought to be an undercount. Deaths may lag by several days due to a process of death review and confirmation.

Milwaukee County COVID-19 Summary Statistics

Overall Milwaukee County COVID-19 Summary Statistics March 5, 2020 - October 5, 2021

	Milwaukee County	City of Milwaukee	Suburbs
Total tests performed	1,802,423	1,134,865	667,558
Percent positive of all tests performed	8.1%	8.3%	7.8%
Number of confirmed cases	130,891	84,839	46,052
Number of hospitalizations	8,551	5,640	2,911
Number of deaths	1,513	834	679
Case fatality rate	1.2%	1.0%	1.5%

Weekly Milwaukee County COVID-19 Summary Statistics September 29, 2021 - October 5, 2021

	Milwaukee County	City of Milwaukee	Suburbs
Total tests performed	24,453	14,953	9,500
Percent positive of all tests performed	8.6%	9.5%	7.3%
Number of confirmed cases	1,619	1,126	493
Number of hospitalizations*	310	207	103
Number of deaths	6	3	3

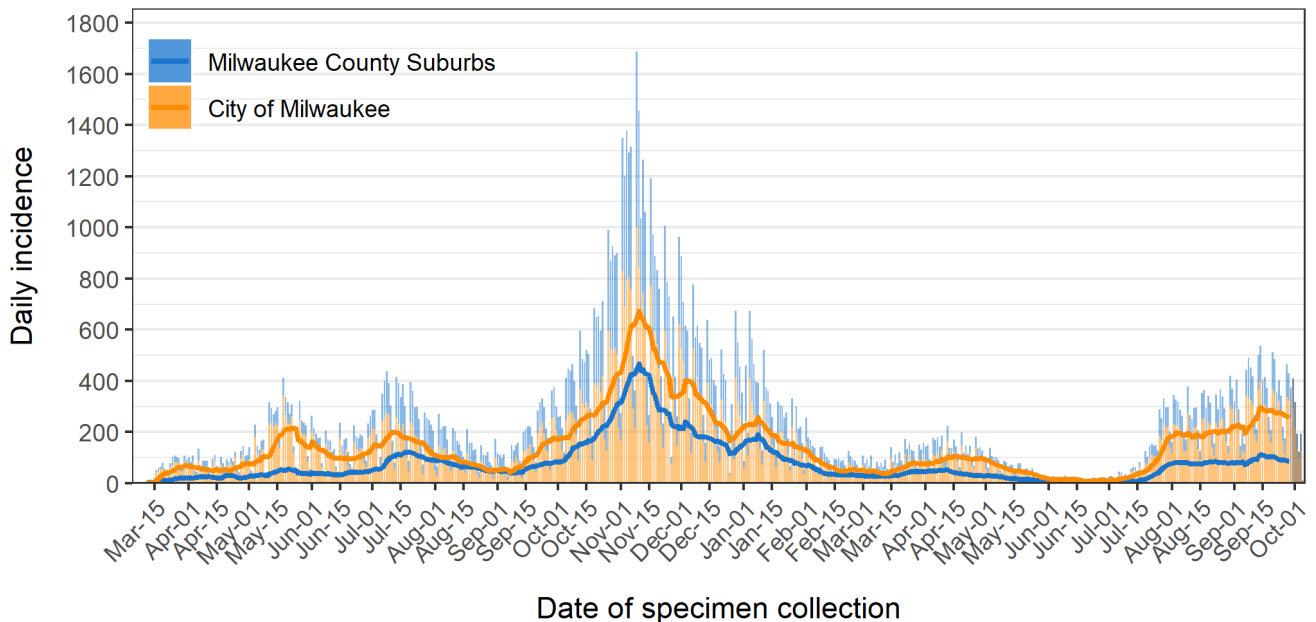
*Total patients hospitalized for COVID-19 with specimen collection date within the last 30 days

Total Cases and New Cases

There are now a total of 130,891 cases in Milwaukee County, since the first confirmed case on March 6th, 2020. Over the last week, we observed 1,619 new confirmed cases in Milwaukee County, including 1,126 new cases in the city of Milwaukee. **Figure 1** shows the daily incidence of new cases (bars) and the average daily incidence within the last 7 days (line), which provides a smoothing effect to enhance visualization, for both the city and the county. To indicate a potential reporting delay, we shaded the last seven days of data and exclude those days from the trend line.

Over the last week, we have seen a plateau in confirmed cases in the county. The highest daily case count since the beginning of the epidemic occurred on November 9, 2020, with 1,687 cases in the county overall. The highest daily case count over the entire epidemic in the suburbs occurred on November 9, 2020, with a total of 685 cases confirmed. The highest case count in the city occurred on November 9, 2020, with a total of 1,002 cases confirmed.

Figure 1: Milwaukee County daily number of COVID-19 cases

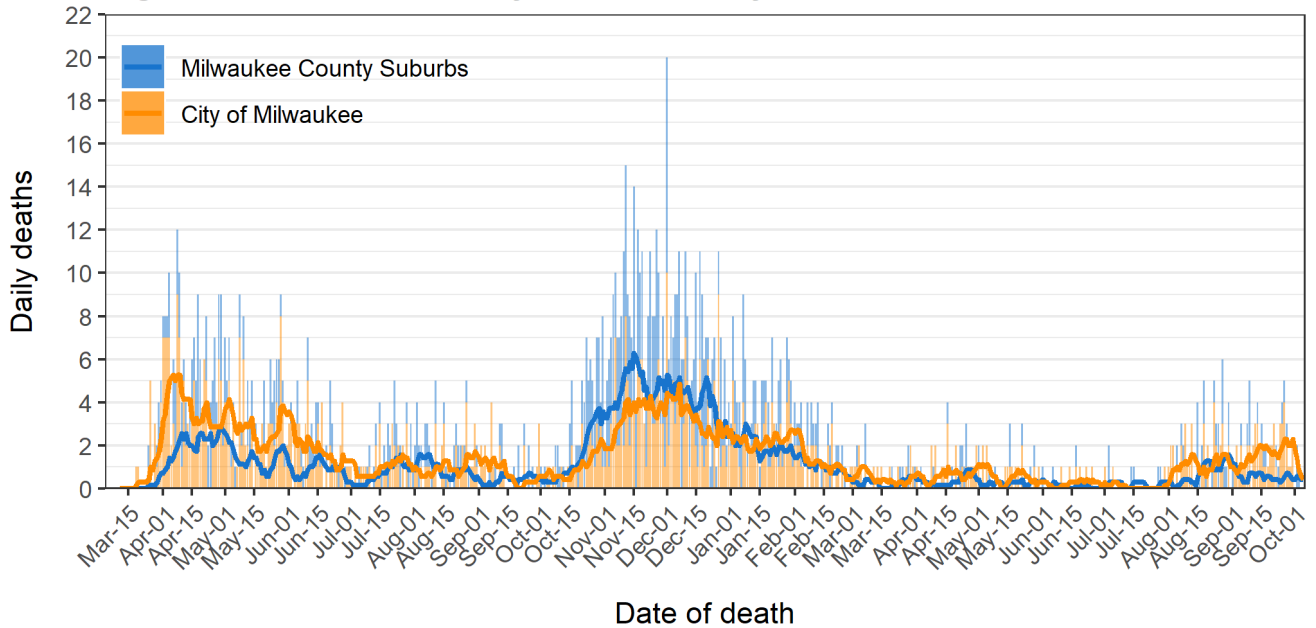


Data source: Wisconsin Electronic Disease Surveillance System (WEDSS)
Created by the Milwaukee County COVID-19 Epidemiology Intel Team

Total Deaths and New Deaths

There are a total of 1,513 COVID-19 related deaths in Milwaukee County. Over the last week, we observed 6 deaths, with 3 from the City of Milwaukee. **Figure 2** shows the number of daily COVID-19 related deaths among Milwaukee County and City of Milwaukee residents. The overlaid lines show the average daily deaths within the last 7 days for each jurisdiction. Deaths in the county peaked on December 1, 2020. Deaths in the city peaked on December 1, 2020 with 10 deaths, and in the suburbs on November 15, 2020 with 10 deaths.

Figure 2: Milwaukee County COVID-19 daily deaths



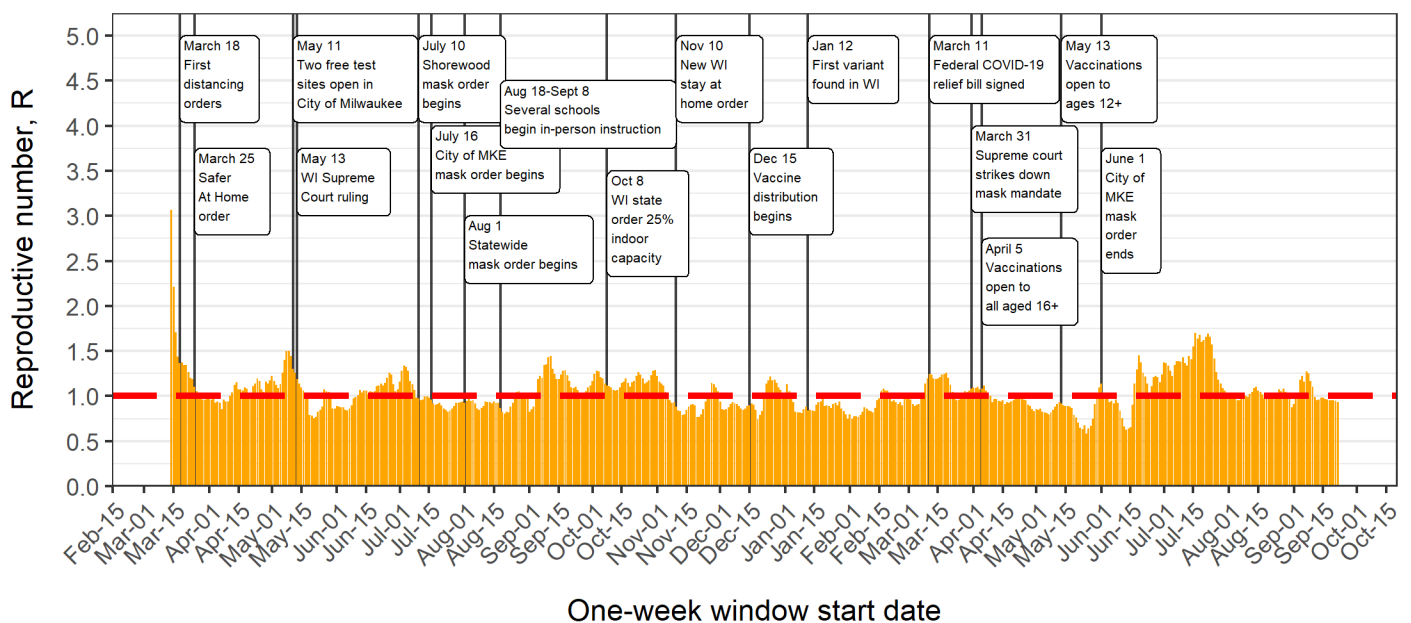
Data source: Wisconsin Electronic Disease Surveillance System (WEDSS)
Created by the Milwaukee County COVID-19 Epidemiology Intel Team

The COVID-19 Reproductive Number

Another way of examining the growth rate of the infection is to examine the reproductive number (R). This number captures the number of new cases that are the result of an existing case. For example, an R of 2 would indicate that each infected person infects 2 new people. The following plots show the change in R over time for Milwaukee County, **Figure 3**, the City of Milwaukee, **Figure 4a**, and Milwaukee County suburbs, **Figure 4b**. Each plot includes key dates related to physical distancing or focused testing campaigns affecting residents. The R for each date is calculated to represent the R for a 7-day period with the start day of that 7-day period represented on the graph. We do not report estimates for the most recent seven days due to a potential data reporting delay. The highest R values observed over the course of the epidemic were 3.07 in the county, 3.40 in the city, and 2.25 in the suburbs, at the beginning of the epidemic in March 2020. The R value fluctuated around 1 since then, until mid-June with the most recent surge in cases thought to be driven by the Delta variant.

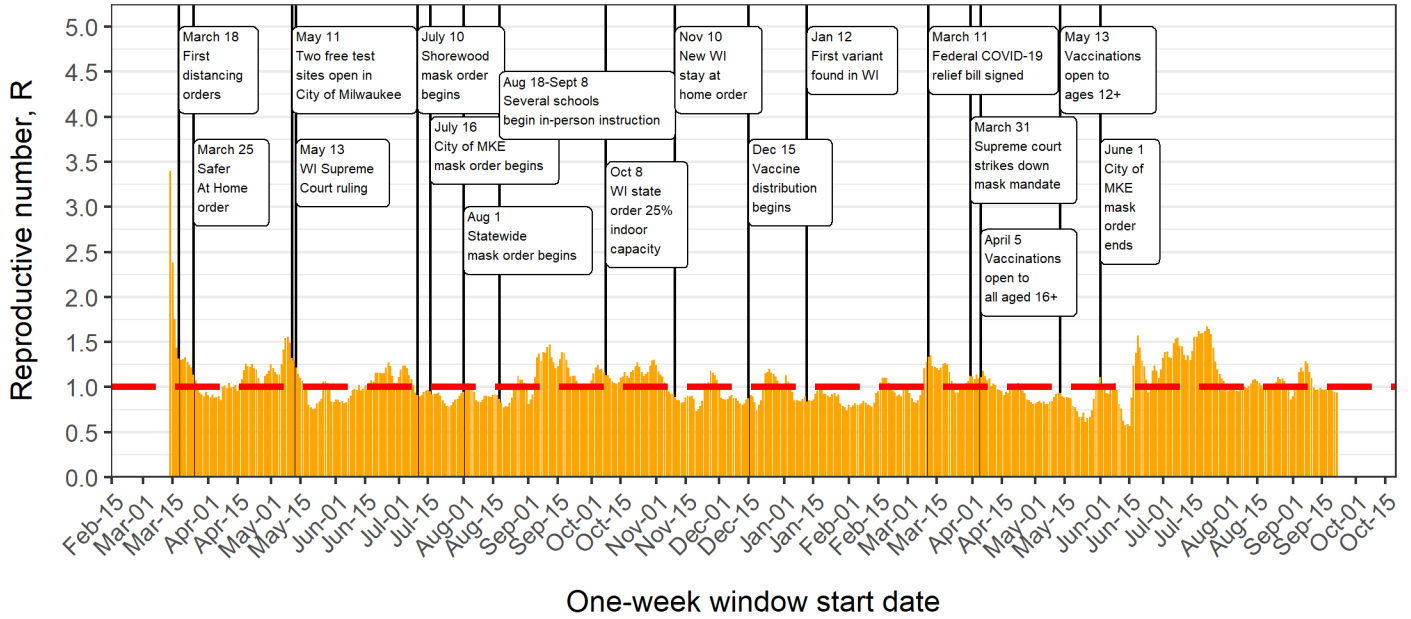
Patterns in the City of Milwaukee are very similar to those in the county overall. Patterns in the suburbs show more fluctuation. The R values for the week of September 22, 2021 through September 28, 2021 are 0.934 for the county, 0.936 in the city, and 0.930 in the suburbs.

Figure 3: One week reproductive number for Milwaukee County



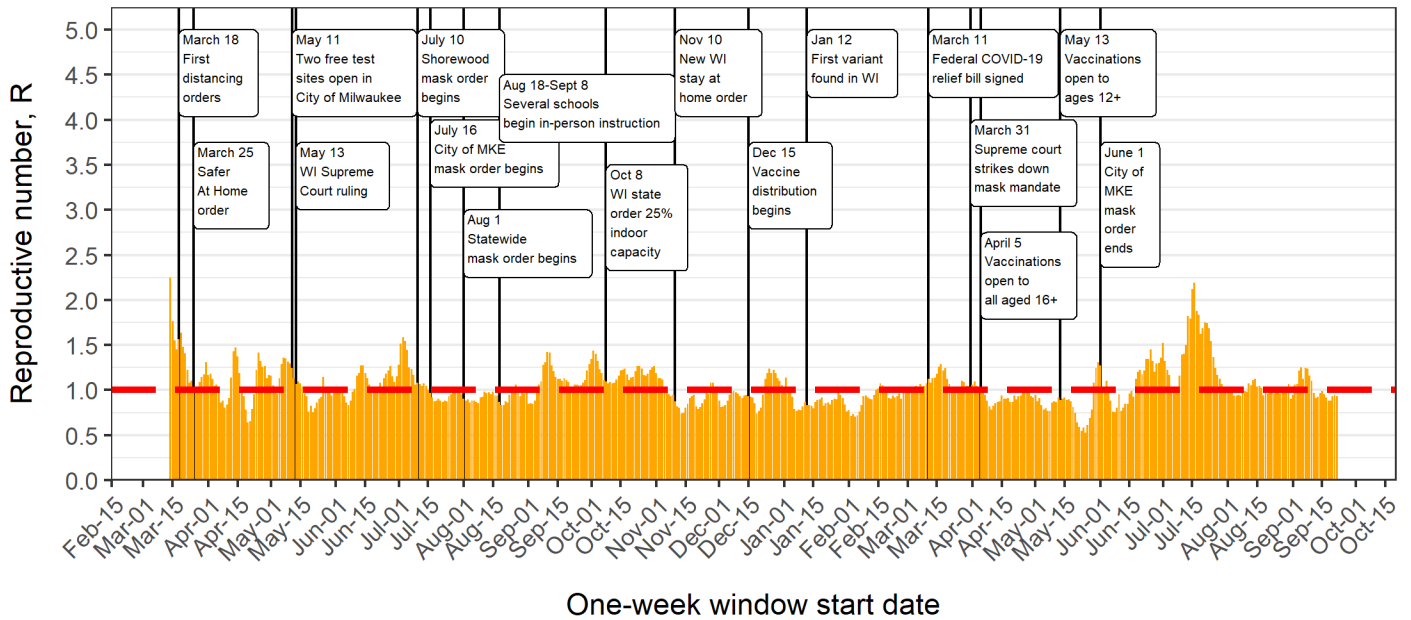
Data source: Wisconsin Electronic Disease Surveillance System (WEDSS)
Created by the Milwaukee County COVID-19 Epidemiology Intel Team

Figure 4a: One week reproductive number for City of Milwaukee



Data source: Wisconsin Electronic Disease Surveillance System (WEDSS)
 Created by the Milwaukee County COVID-19 Epidemiology Intel Team

Figure 4b: One week reproductive number for Milwaukee County suburbs



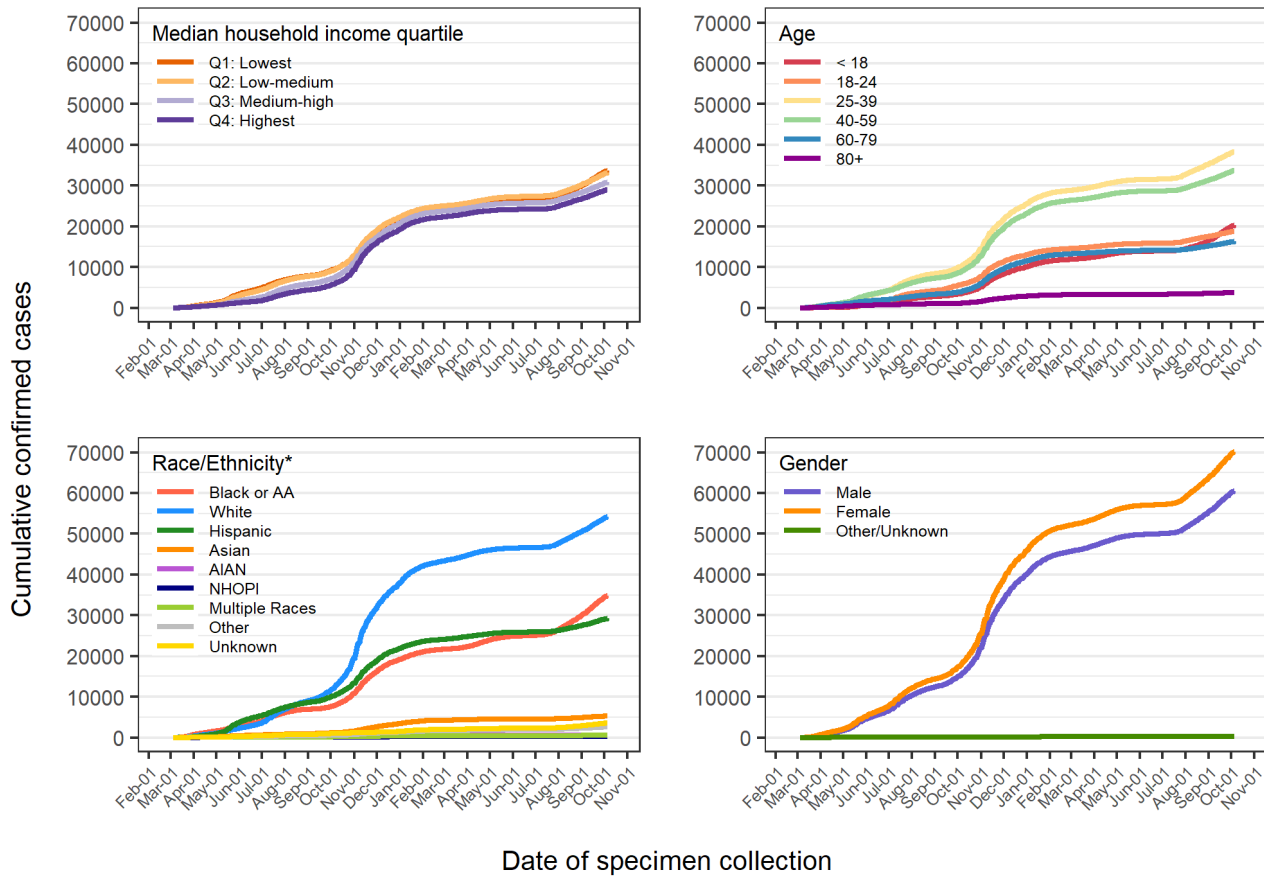
Data source: Wisconsin Electronic Disease Surveillance System (WEDSS)
 Created by the Milwaukee County COVID-19 Epidemiology Intel Team

Demographic Patterns – Age, Sex, Race and Ethnicity

Confirmed cases

COVID-19 cases vary by demographic characteristics. **Figure 5** shows cumulative case plots including confirmed positive cases with an available specimen collection date, plotted by census block group (CBG) median household income, sex, age, and race/ethnicity groups. The cumulative number of cases among those aged 25-39 (N = 38262) still exceeds the number among the next highest group, those aged 40-59 (N = 33691). The number of cases under age 18 (N = 20211) now exceeds the number diagnosed among those aged 18-24 (N = 18726) and 60-79 (N = 16259). Of all confirmed cases, 46% are male and 54% are female. The largest number of cases have been identified among the non-Hispanic White population (N = 54177), followed by the Black/AA population (N = 34786) and the Hispanic population (N = 29188). The lower two quartiles of median household income (\$0 to \$35,833, and \$35,834 to \$50,096) have a larger number of cases than the higher two quartiles (\$50,097 to \$68,393, and \$68,394 to \$250,001), with the fewest cases identified among the highest income group.

Figure 5: Cumulative confirmed cases in Milwaukee County



Data source: Wisconsin Electronic Disease Surveillance System (WEDSS)

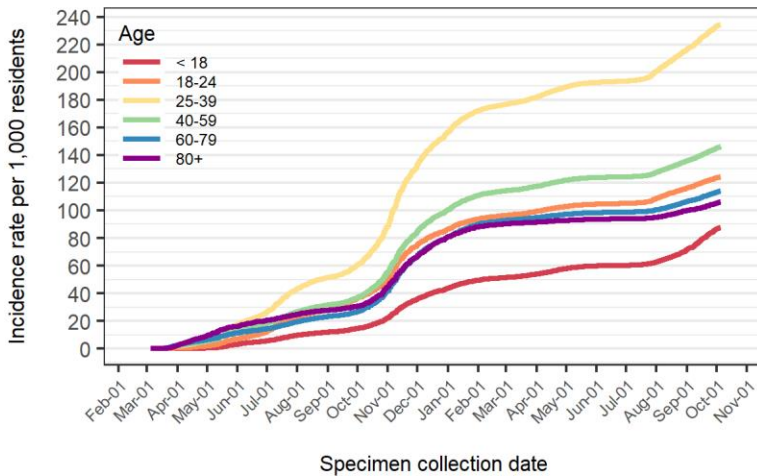
Created by the Milwaukee County COVID-19 Epidemiology Intel Team

*Race and ethnicity were combined into one variable where the Hispanic category includes Hispanics of any race.

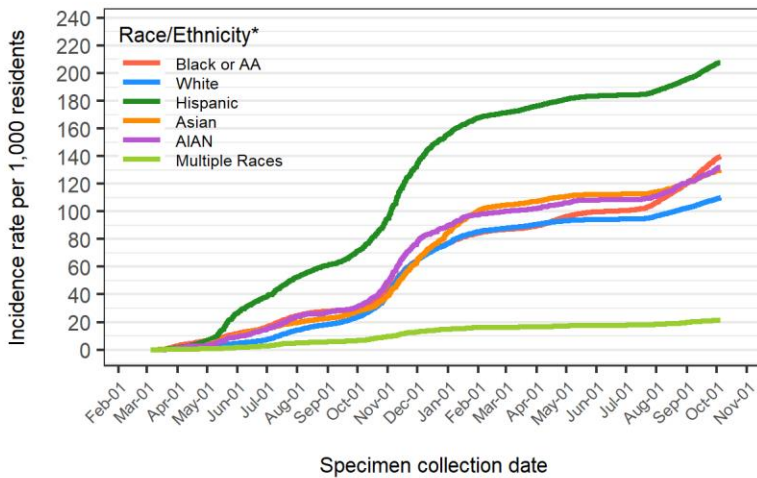
AIAN stands for American Indian or Alaska Native and NHOPI stands for Native Hawaiian or Other Pacific Islander.

When examined as population-based rates in **Figure 6**, demographic patterns are also apparent. Early in the epidemic, we saw a clear age gradient in population-based rates, with older populations experiencing greater rates. However, since then, we have seen higher rates among the younger, working age groups (18-24, 25-39, and 40-59) and most recently among children (0-17). By race and ethnicity, the rate was highest among Black/AA populations until the beginning of May 2020, when we observed a surge among Hispanics resulting in the Hispanic rate (207.63 per 1,000 people) exceeding that among all other racial and ethnic groups. The rates among Black/AAs (139.7 per 1,000), Asians (129.81 per 1,000 people), and AIANs (131.7 per 1,000 people) come next, followed by Non-Hispanic Whites (109.73 per 1,000). The rate among Black/AA residents increased with the summer 2021 surge in cases thought to be driven by the Delta variant. The rate among females (142.34 per 1,000 people) exceeds the rate among males (131.09 per 1,000 people).

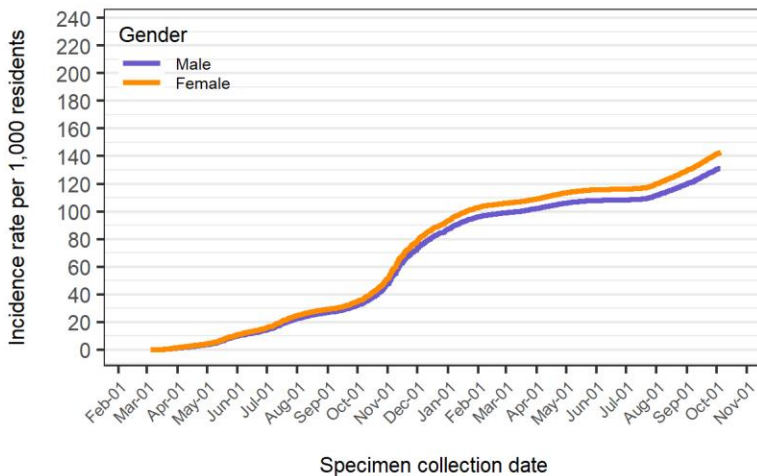
Figure 6: Population based incidence rates in Milwaukee County



Age	N Cases	Population	Rate per 1,000 residents
< 18	20211	231111	87.45
18-24	18726	150895	124.10
25-39	38262	163246	234.38
40-59	33691	230887	145.92
60-79	16259	142783	113.87
80+	3742	35287	106.04



Race/Ethnicity*	N Cases	Population	Rate per 1,000 residents
Black or AA	34786	249011	139.70
White	54177	493723	109.73
Hispanic	29188	140575	207.63
Asian	5250	40443	129.81
AIAN	612	4647	131.70
Multiple Races	517	24224	21.34



Gender	N Cases	Population	Rate per 1,000 residents
Male	60520	461670	131.09
Female	70110	492539	142.34

Data source: Wisconsin Electronic Disease Surveillance System (WEDSS)

Created by the Milwaukee County COVID-19 Epidemiology Intel Team

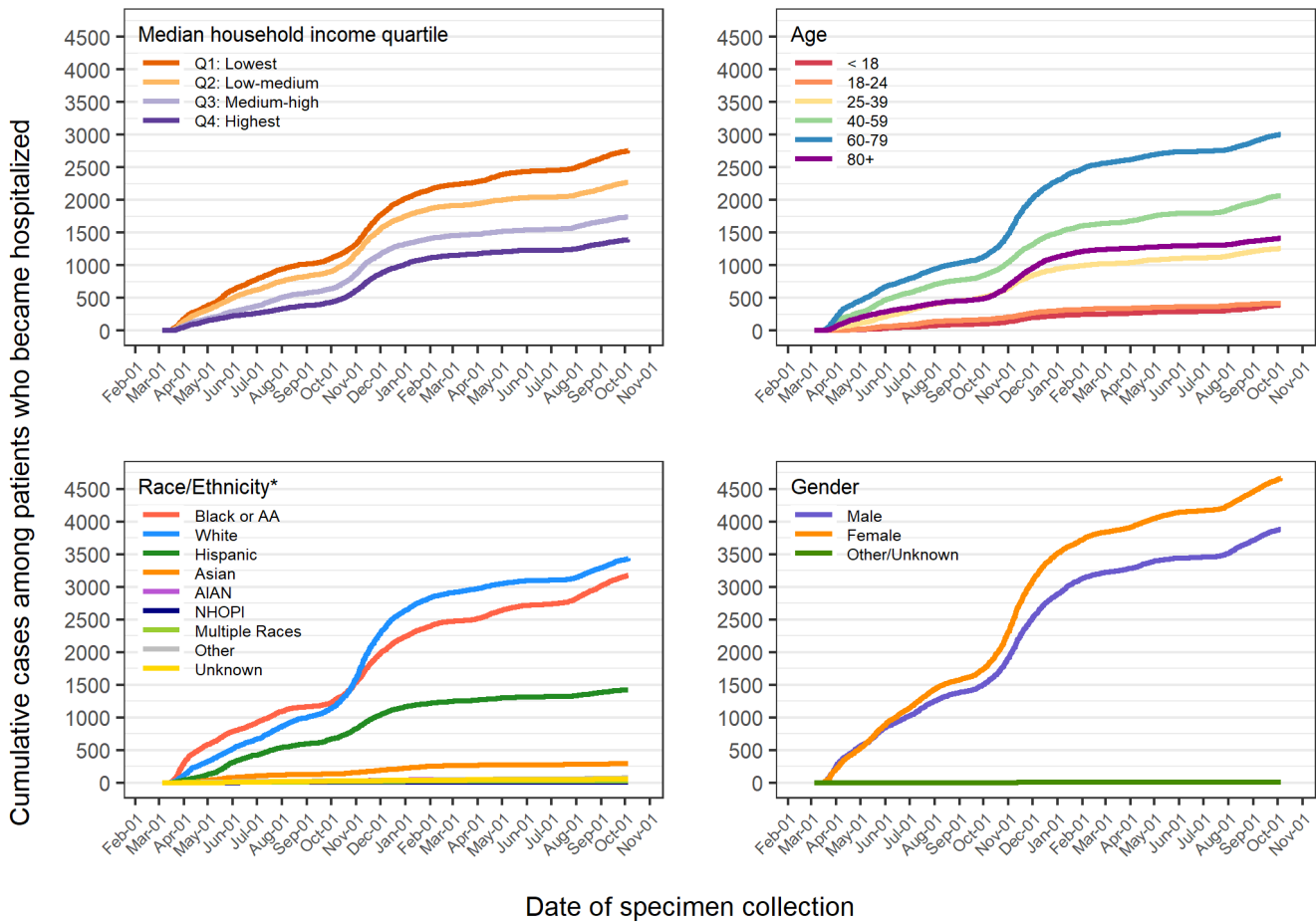
*Race and ethnicity were combined into one variable where the Hispanic category includes Hispanics of any race.

AIAN stands for American Indian or Alaska Native and NHOPI stands for Native Hawaiian or Other Pacific Islander.

Hospitalizations

A total of 8551 Milwaukee County residents have been hospitalized due to COVID-19. **Figure 7** shows cumulative hospitalizations based on lab specimen collection date (as admission dates are incomplete). The highest number of hospitalizations continues to be among those ages 60-79 (N = 3002). The highest number of hospitalizations have now occurred among Non-Hispanic White community (N = 3435), followed by the Black/AA community (N = 3176), and then the Hispanic community (N = 1422). Overall, counts are lower among other racial and ethnic groups. Females outnumber males, comprising 54.5% of all hospitalized cases. More individuals among lower income than higher income groups have been hospitalized, with a clear income gradient observed.

Figure 7: Cumulative hospitalizations in Milwaukee County



Data source: Wisconsin Electronic Disease Surveillance System (WEDSS)

Created by the Milwaukee County COVID-19 Epidemiology Intel Team

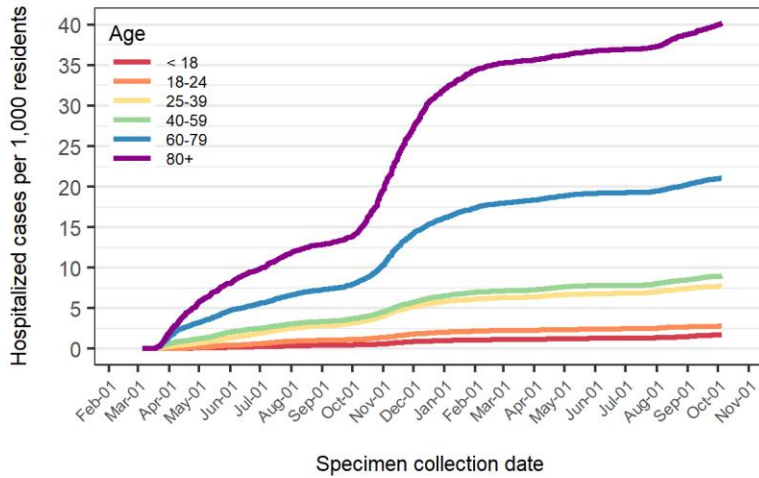
*Race and ethnicity were combined into one variable where the Hispanic category includes Hispanics of any race.

AIAN stands for American Indian or Alaska Native and NHOPI stands for Native Hawaiian or Other Pacific Islander.

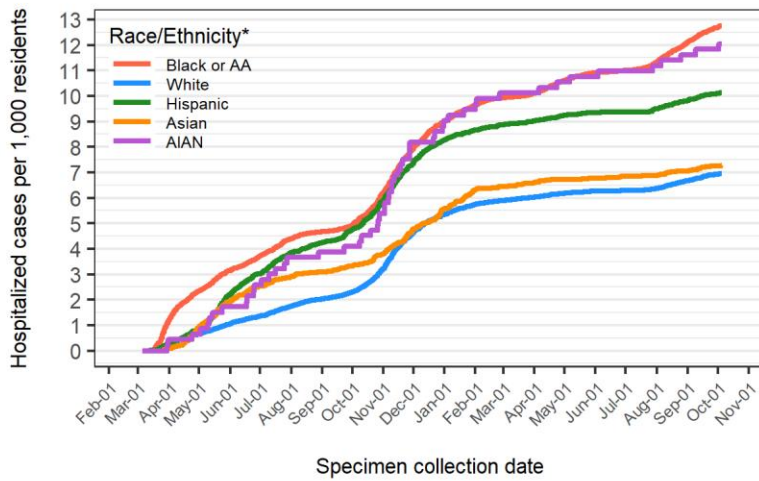
When examined as population-based rates and case-based rates in **Figure 8**, hospitalization patterns are also apparent by demographic characteristics. Both population- and case-based hospitalization rates exhibit a clear age group gradient, with older age groups experiencing higher rates. For race and ethnicity and gender plots, note that the vertical axis has been adjusted to reveal variation and the scales are not directly comparable across age, gender, and race/ethnicity plots. By race and ethnicity, population and case-based hospitalization rates are highest among the Black/AA and AIAN populations and the population-based rate is lowest for non-Hispanic Whites. Note the variation in the timing of rate

increases across racial and ethnic groups. Rates by gender are very similar. All rates presented are crude rates and only groups with 10 or more total hospitalized cases are shown.

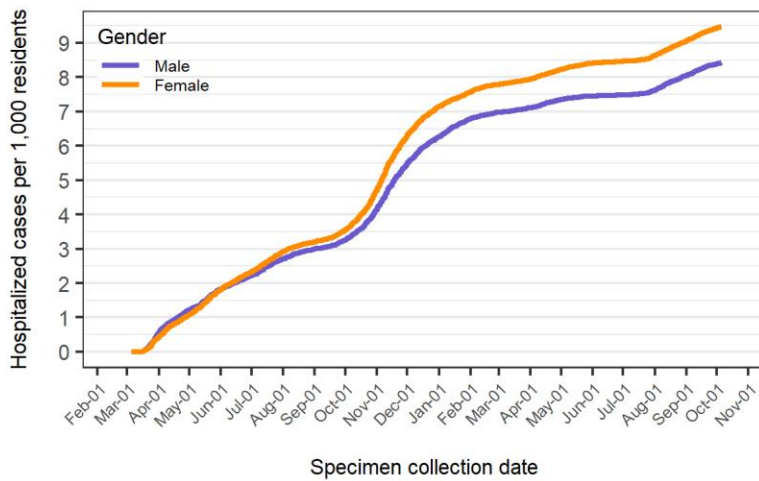
Figure 8: Population and case based hospitalization rates in Milwaukee County



Age	N Hospitalized Cases	Rate per 1,000 residents	Rate per 100 cases
< 18	392	1.70	1.94
18-24	417	2.76	2.23
25-39	1257	7.70	3.29
40-59	2067	8.95	6.14
60-79	3002	21.02	18.46
80+	1416	40.13	37.84



Race/Ethnicity*	N Hospitalized Cases	Rate per 1,000 residents	Rate per 100 cases
Black or AA	3176	12.75	9.13
White	3435	6.96	6.34
Hispanic	1422	10.12	4.87
Asian	294	7.27	5.60
AIAN	56	12.05	9.15



Gender	N Hospitalized Cases	Rate per 1,000 residents	Rate per 100 cases
Male	3884	8.41	6.42
Female	4663	9.47	6.65

Data source: Wisconsin Electronic Disease Surveillance System (WEDSS)

Created by the Milwaukee County COVID-19 Epidemiology Intel Team

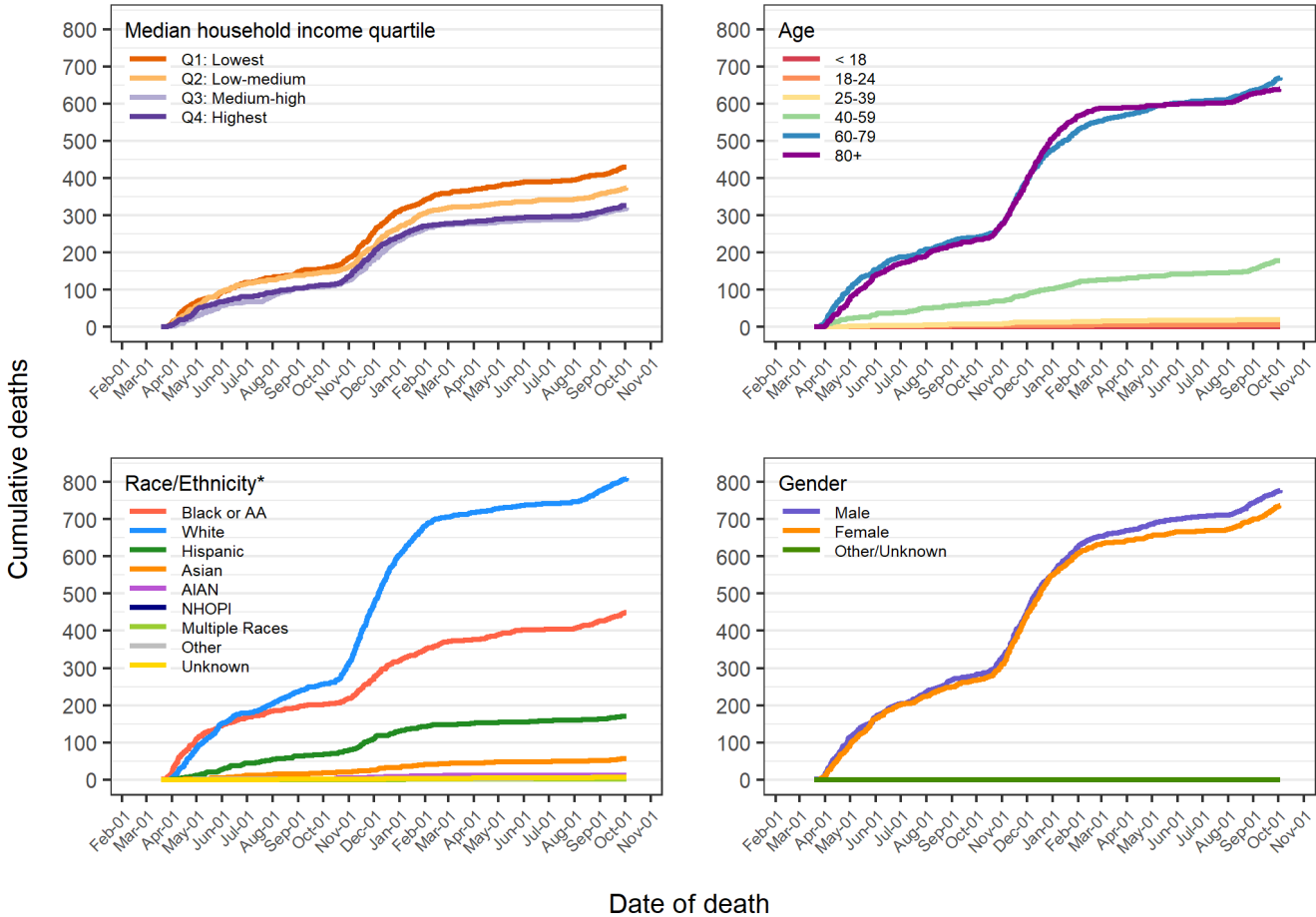
*Race and ethnicity were combined into one variable where the Hispanic category includes Hispanics of any race.

AIAN stands for American Indian or Alaska Native and NHOPI stands for Native Hawaiian or Other Pacific Islander.

Deaths

There are now a total of 1513 confirmed deaths in Milwaukee County, representing a case fatality rate of 1.2%. We observed 6 new deaths over the past week in the county. Mortality patterns differ by demographic characteristics, as shown in **Figure 9**. The largest number of deaths are recorded among those age 60 or older. The largest number of deaths are recorded for males (N = 777) and for non-Hispanic Whites (N = 810) followed by Black/AA residents (N = 449). By income, there are a larger number of deaths among the two lower income groups as compared to the two higher income groups. Deaths among Hispanics remain relatively low.

Figure 9: Cumulative deaths in Milwaukee County



Data source: Wisconsin Electronic Disease Surveillance System (WEDSS)

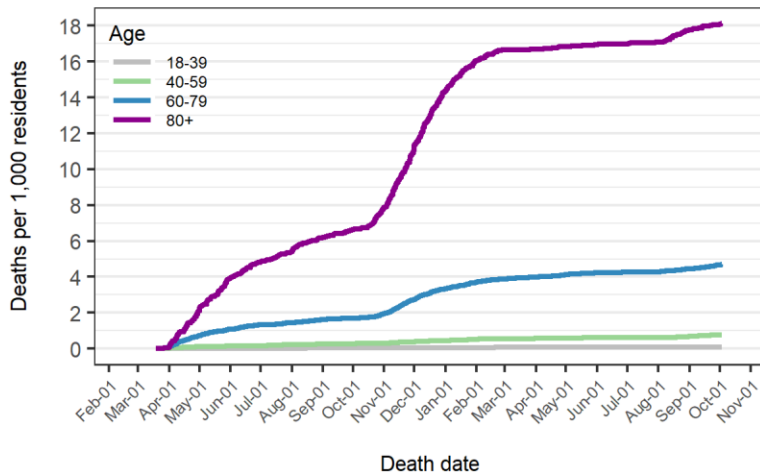
Created by the Milwaukee County COVID-19 Epidemiology Intel Team

*Race and ethnicity were combined into one variable where the Hispanic category includes Hispanics of any race.

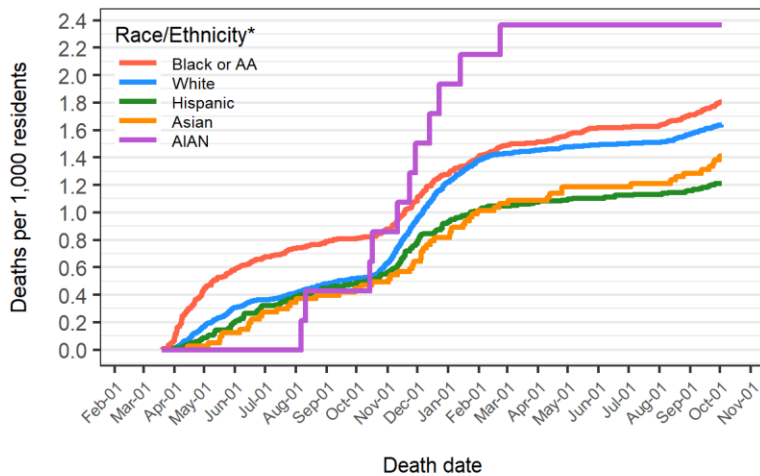
AIAN stands for American Indian or Alaska Native and NHOPI stands for Native Hawaiian or Other Pacific Islander.

In terms of population- and case-based rates shown in **Figure 10**, there is a clear age category gradient, with higher death rates among older populations. For race and ethnicity and gender plots, note that the vertical axis has been adjusted to reveal variation and the scales are not directly comparable across age, gender, and race/ethnicity plots. Males have a higher death rate than females. The AIAN population has the highest population and case-based death rates, although the total number of deaths is small in comparison to other racial and ethnic groups. Black/AA populations and non-Hispanic Whites have the next highest population and case-based death rates. All rates presented are crude rates and only groups with 9 or more total deaths are shown.

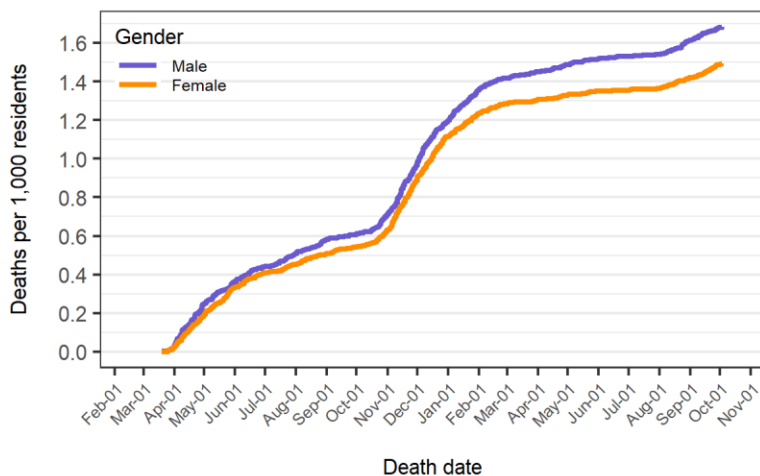
Figure 10: Population and case based death rates in Milwaukee County



Age	N Deaths	Rate per 1,000 residents	Rate per 100 cases
18-39	25	0.08	0.04
40-59	178	0.77	0.53
60-79	670	4.69	4.12
80+	639	18.11	17.08



Race/Ethnicity*	N Deaths	Rate per 1,000 residents	Rate per 100 cases
Black or AA	449	1.80	1.29
White	810	1.64	1.50
Hispanic	170	1.21	0.58
Asian	57	1.41	1.09
AIAN	11	2.37	1.80



Gender	N Deaths	Rate per 1,000 residents	Rate per 100 cases
Male	777	1.68	1.28
Female	736	1.49	1.05

Data source: Wisconsin Electronic Disease Surveillance System (WEDSS)

Created by the Milwaukee County COVID-19 Epidemiology Intel Team

*Race and ethnicity were combined into one variable where the Hispanic category includes Hispanics of any race.

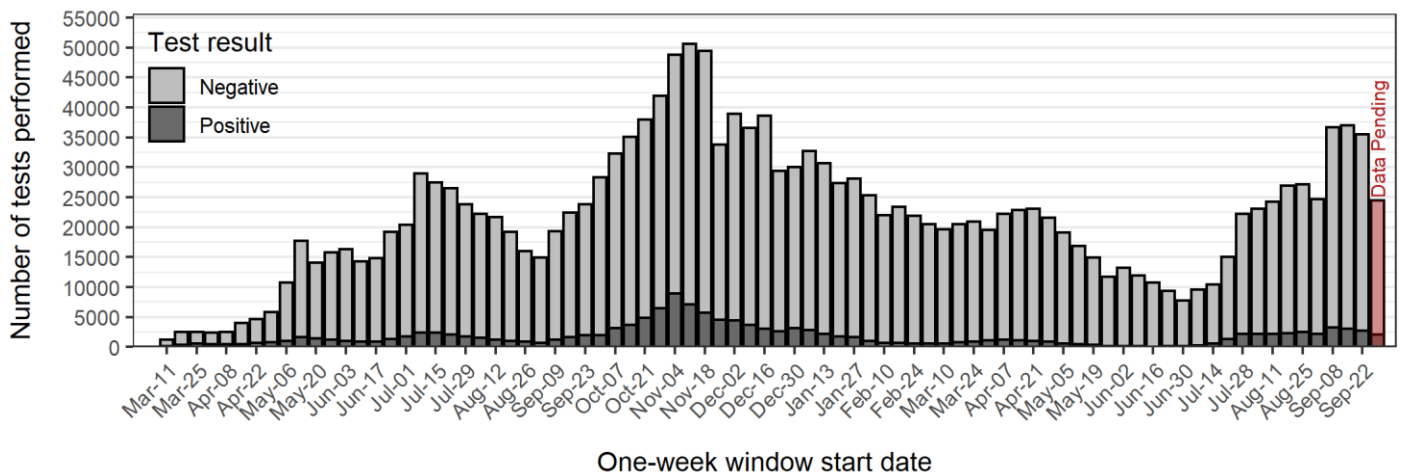
AIAN stands for American Indian or Alaska Native and NHOPI stands for Native Hawaiian or Other Pacific Islander.

Testing Coverage

Testing for the novel coronavirus is an important public health response to limiting the spread of the infection. Testing capacity was limited in Milwaukee County and across the country earlier in the epidemic, but then increased. Since the first case of COVID-19 was diagnosed in Milwaukee County on March 6, 2020, a total of 1,802,423 COVID-19 tests have been performed, with 1,655,710 negative results and 146,713 positive results. This represents a positive test rate of 8.1% since the beginning of the epidemic.

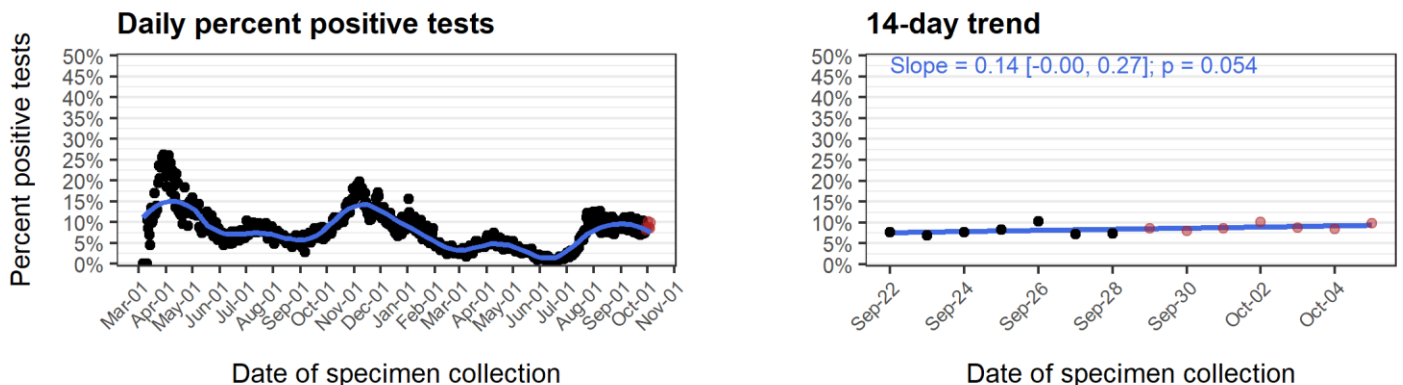
As shown in **Figure 11**, total tests per week increased until early July 2020 and then declined, with another increase starting in early September 2020 and peaking in early November, followed by a decline. Testing markedly decreased the weeks of Thanksgiving, Christmas, and the 2021 New Year. Testing then decreased until the summer 2021 surge in cases beginning in late June. As shown in **Figure 12**, the percentage of positive tests varied over the course of the epidemic, with a high of 25-30% in early April of 2020. The percentage of positive tests was 8.6% over the past week compared to 7.6% the previous week. **Figure 12** also illustrates the 14-day trend in the percent positive tests, showing no significant change. Percent positive should be interpreted in the context of potential data delays, and considering that data entry for positive tests is prioritized.

Figure 11: Milwaukee County number of tests per week



Data source: Wisconsin Electronic Disease Surveillance System (WEDSS)
Created by the Milwaukee County COVID-19 Epidemiology Intel Team

Figure 12: Milwaukee County percent positive tests



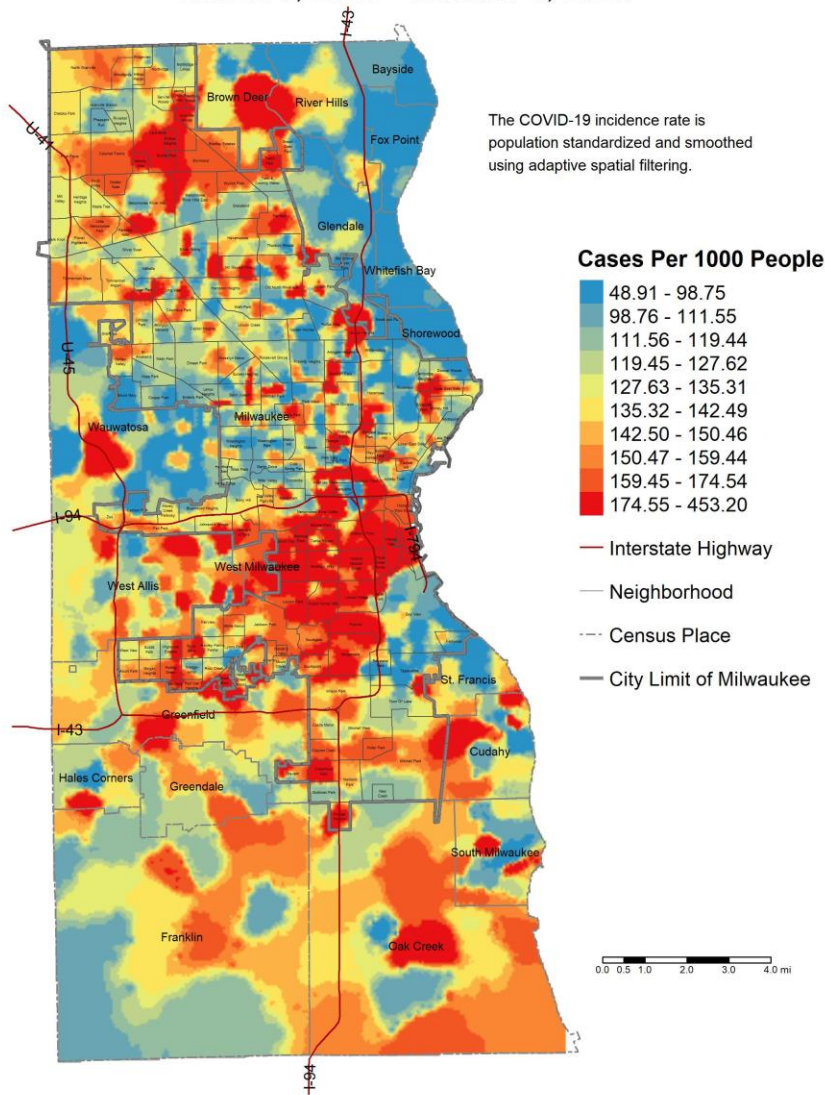
Data source: Wisconsin Electronic Disease Surveillance System (WEDSS)
Created by the Milwaukee County COVID-19 Epidemiology Intel Team

Spatial Patterns of Cases and Testing

COVID-19 spread is spatially patterned. **Map 1** below illustrates the cumulative burden (all confirmed cases) of COVID-19 in Milwaukee County. **Map 2** shows cases confirmed over the last two weeks. **Map 3** shows the overall testing rate across the population. **Map 4** shows the testing rate over the last two weeks. **Map 5** depicts the percentage of tests that were confirmed positive. **Map 6** shows cumulative COVID-19 related hospitalizations. **Map 7** shows the percentage of cases who have been hospitalized. **Map 8** shows the overall COVID-19 mortality rate, excluding cases and corresponding population denominators residing in group quarters such as nursing homes and long-term care facilities. All are crude rate maps created using census block group level COVID-19 data from WEDSS and population data from the US Census. The maps are smoothed to protect confidentiality and ensure that rates are stable while still providing geographic detail. Deciles are used to define categories. High rates are depicted in red with lower rates depicted in blue. Of note, some of the higher rates observed can be attributed to infections that have spread within group quarters, such as a nursing home, prison, or long-term care facility.

Decile Map 1: All confirmed cases of COVID-19

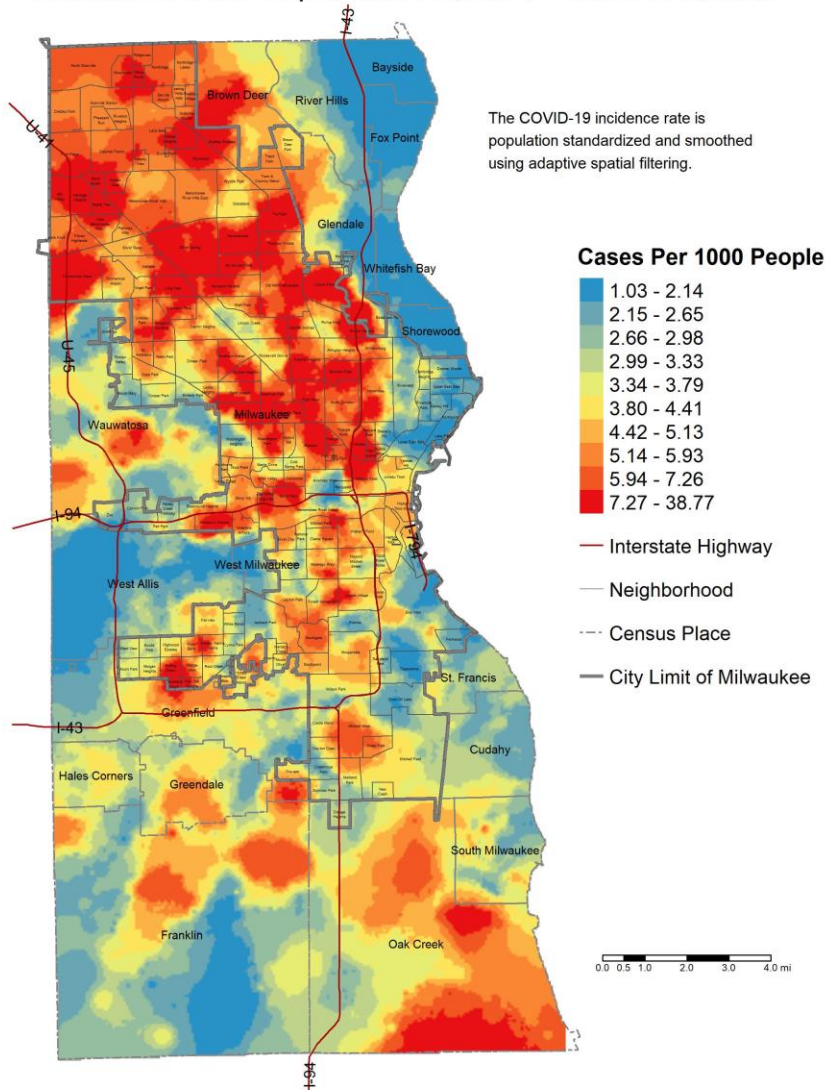
COVID-19 Incidence Rate March 6, 2020 - October 5, 2021



Method: A grid of points is used to estimate rates continuously across the map, based on the nearest cases with a minimum of 15 confirmed cases included.
 Data Sources: Wisconsin Electronic Disease Surveillance System (WEDSS) (incidence data)
 2018 American Community Survey (population data)
 City of Milwaukee Map Milwaukee Portal (neighborhood boundaries)
 Census Bureau TIGER/Line Shapefiles (census place boundaries)
 Created by the Milwaukee County Covid-19 Epidemiology Intel Team

Decile Map 2: Confirmed cases of COVID-19 within the last two weeks

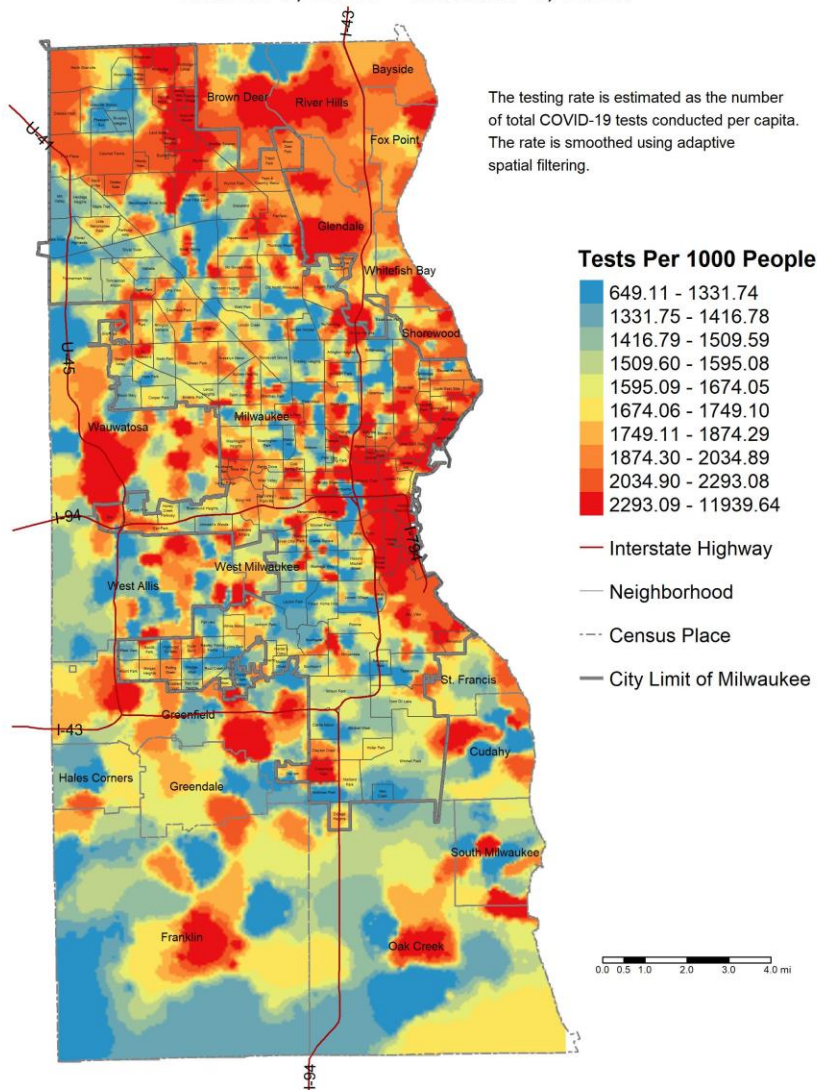
COVID-19 Incidence Rate Latest 2 Weeks September 22,2021 - October 5,2021



Method: A grid of points is used to estimate rates continuously across the map, based on the nearest cases with a minimum of 15 confirmed cases included.
 Data Sources: Wisconsin Electronic Disease Surveillance System (WEDSS) (incidence data)
 2018 American Community Survey (population data)
 City of Milwaukee Map Milwaukee Portal (neighborhood boundaries)
 Census Bureau TIGER/Line Shapefiles (census place boundaries)
 Created by the Milwaukee County Covid-19 Epidemiology Intel Team

Decile Map 3: Overall testing rate

COVID-19 Testing Rate March 6, 2020 - October 5, 2021



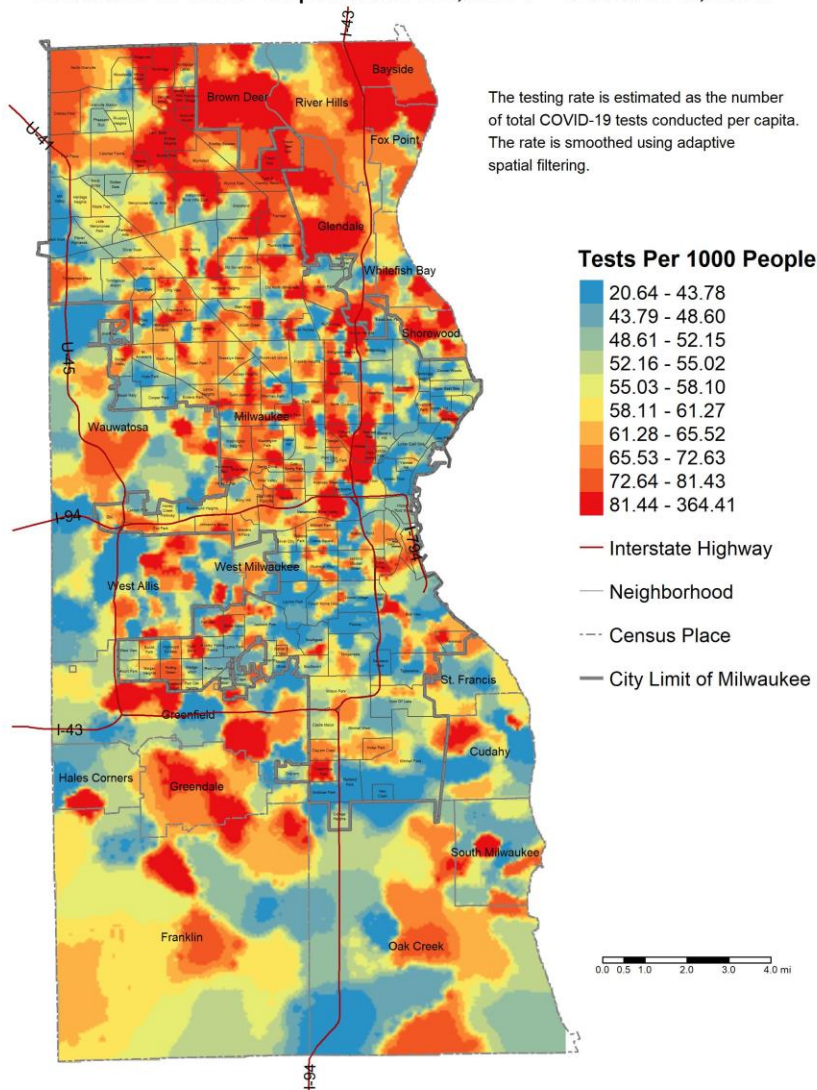
Method: A grid of points is used to estimate rates continuously across the map, based on the nearest cases with a minimum of 15 tests included.

Data Sources: Wisconsin Electronic Disease Surveillance System (WEDSS) (incidence data)
2018 American Community Survey (population data)
City of Milwaukee Map Milwaukee Portal (neighborhood boundaries)
Census Bureau TIGER/Line Shapefiles (census place boundaries)

Created by the Milwaukee County Covid-19 Epidemiology Intel Team

Decile Map 4: Testing rate within the last two weeks

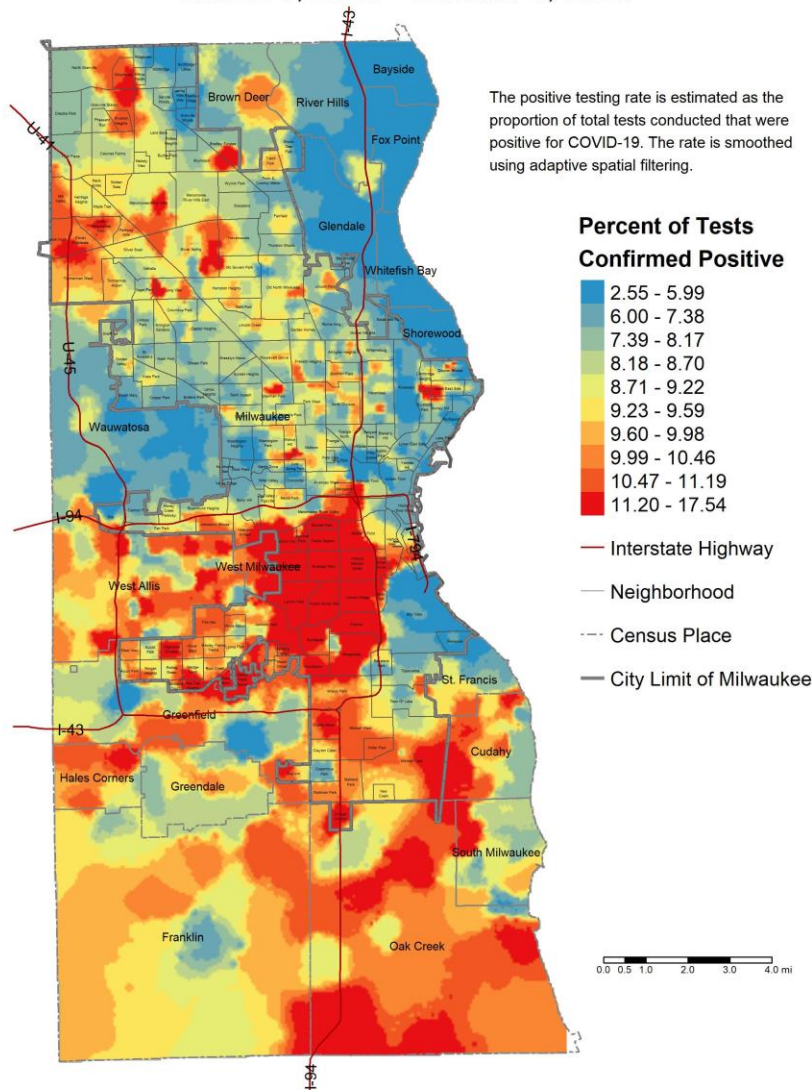
COVID-19 Testing Rate Latest 2 Weeks September 22,2021 - October 5,2021



Method: A grid of points is used to estimate rates continuously across the map, based on the nearest cases with a minimum of 15 tests included.
 Data Sources: Wisconsin Electronic Disease Surveillance System (WEDSS) (incidence data)
 2018 American Community Survey (population data)
 City of Milwaukee Map Milwaukee Portal (neighborhood boundaries)
 Census Bureau TIGER/Line Shapefiles (census place boundaries)
 Created by the Milwaukee County Covid-19 Epidemiology Intel Team

Decile Map 5: Percentage of tests that were confirmed positive

COVID-19 Positive Testing Rate March 6, 2020 - October 5, 2021



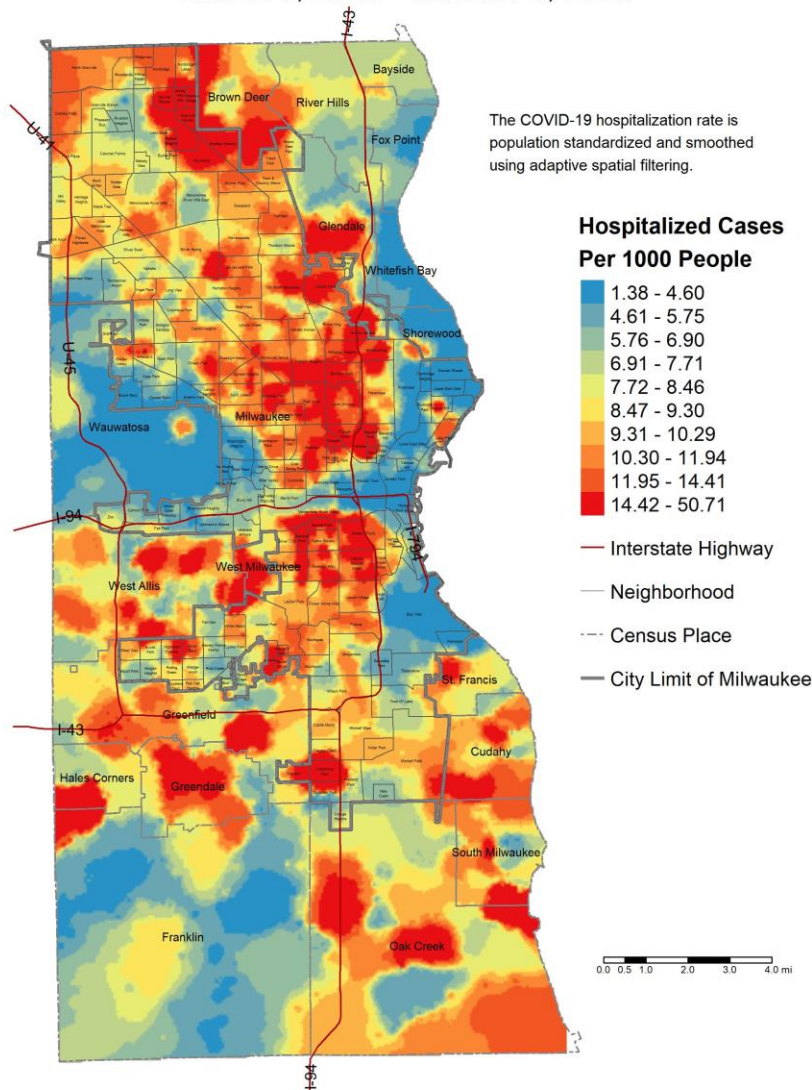
Method: A grid of points is used to estimate rates continuously across the map, based on the nearest cases with a minimum of 15 positive tests included.

Data Sources: Wisconsin Electronic Disease Surveillance System (WEDSS) (incidence data)
2018 American Community Survey (population data)
City of Milwaukee Map Milwaukee Portal (neighborhood boundaries)
Census Bureau TIGER/Line Shapefiles (census place boundaries)

Created by the Milwaukee County Covid-19 Epidemiology Intel Team

Decile Map 6: COVID-19 related hospitalizations

COVID-19 Hospitalization Rate March 6, 2020 - October 5, 2021



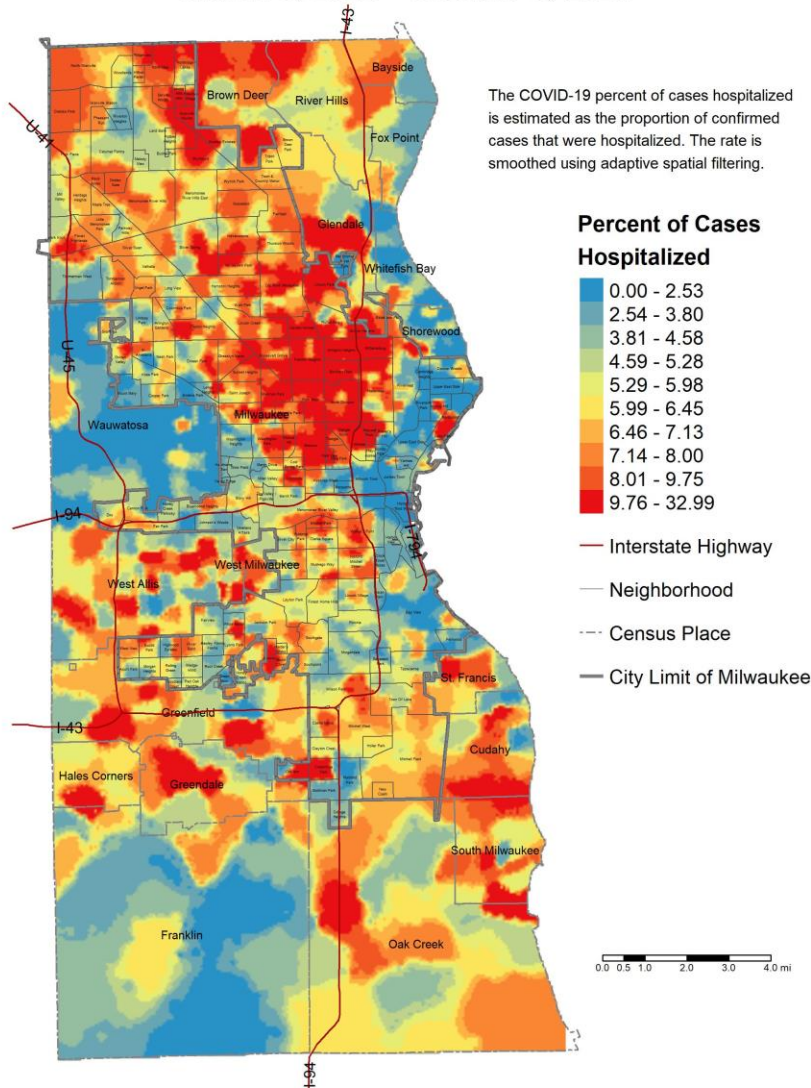
Method: A grid of points is used to estimate rates continuously across the map, based on the nearest cases with a minimum of 15 hospitalized cases included.

Data Sources: Wisconsin Electronic Disease Surveillance System (WEDSS) (incidence data)
2018 American Community Survey (population data)
City of Milwaukee Map Milwaukee Portal (neighborhood boundaries)
Census Bureau TIGER/Line Shapefiles (census place boundaries)

Created by the Milwaukee County Covid-19 Epidemiology Intel Team

Decile Map 7: Percentage of COVID-19 cases that were hospitalized

COVID-19 Percent of Cases Hospitalized March 6, 2020 - October 5, 2021



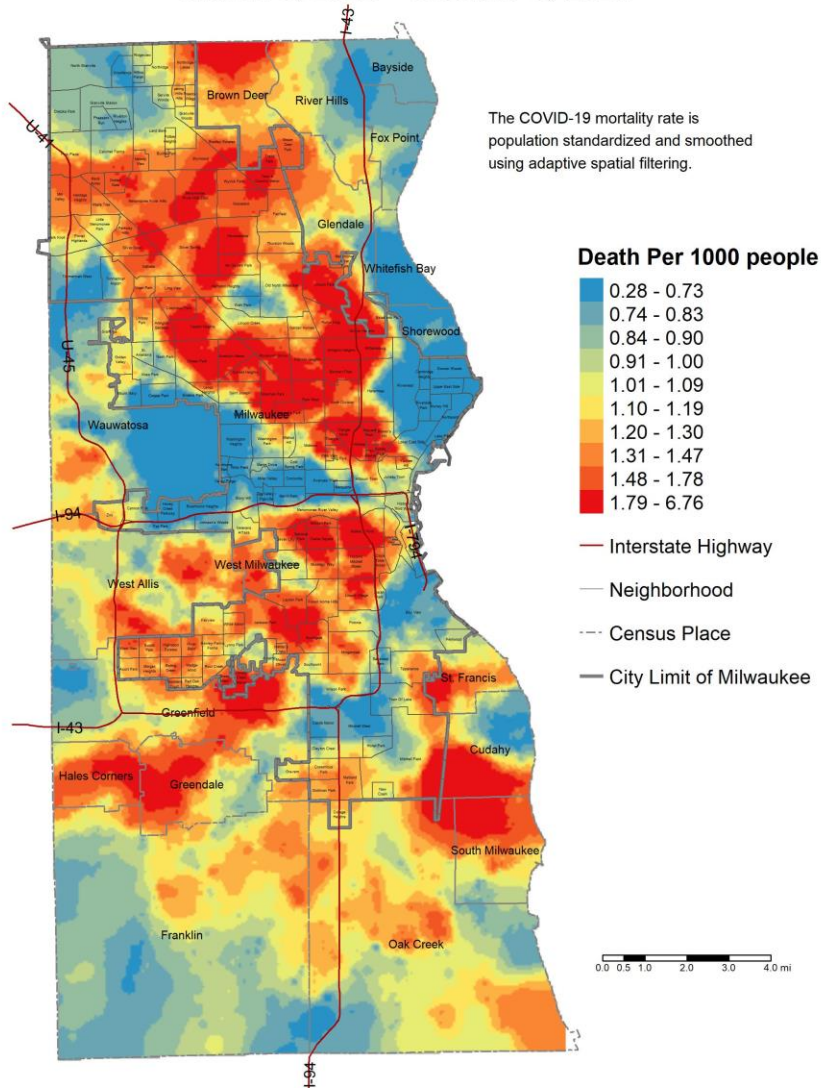
Method: A grid of points is used to estimate rates continuously across the map, based on the nearest cases with a minimum of 15 confirmed cases included.

Data Sources: Wisconsin Electronic Disease Surveillance System (WEDSS) (incidence data)
2018 American Community Survey (population data)
City of Milwaukee Map Milwaukee Portal (neighborhood boundaries)
Census Bureau TIGER/Line Shapefiles (census place boundaries)

Created by the Milwaukee County Covid-19 Epidemiology Intel Team

Decile Map 8: COVID-19 mortality rate (group-quarter cases excluded)

COVID-19 Mortality Rate March 6, 2020 - October 5, 2021



Method: A grid of points is used to estimate rates continuously across the map, based on the nearest cases with a minimum of 10 death cases included.
 Data Sources: Wisconsin Electronic Disease Surveillance System (WEDSS) (incidence data)
 2018 American Community Survey (population data)
 City of Milwaukee Map Milwaukee Portal (neighborhood boundaries)
 Census Bureau TIGER/Line Shapefiles (census place boundaries)
 Created by the Milwaukee County Covid-19 Epidemiology Intel Team

Data Sources & Acknowledgments

This report was created by faculty and staff in the Medical College of Wisconsin (MCW) Institute for Health and Equity (IHE) in partnership with representatives from local health departments and faculty from the University of Wisconsin-Milwaukee Zilber School of Public Health. Data sources include the Wisconsin Electronic Disease Surveillance System (WEDSS), the US Census Bureau, the Milwaukee County Medical Examiner's office, the Emergency Medicine Resource, and publicly available data obtained from local health and emergency response agencies. Data from the Wisconsin Electronic Data Surveillance System (WEDSS) summarized for the week includes data from September 29, 2021 through October 5, 2021.

Contact Information

For additional questions on this report, please contact Darren Rausch, Health Officer/Director, Greenfield Health Department, and Lead, Milwaukee County COVID-19 Epidemiology Intel Team:
Darren.Rausch@greenfieldwi.us or (414) 329-5275.