

Milwaukee County COVID-19 vaccine data summary

Milwaukee County COVID-19 Epidemiology Intel Team

This report was updated on August 12, 2021 and includes data through August 9, 2021. Note that data for recent weeks may be under-reported due to lags in data entry.

Milwaukee County COVID-19 Vaccination Totals December 15, 2020 - August 9, 2021

| | Milwaukee County | City of Milwaukee | Suburbs |
|---|------------------|-------------------|----------------|
| Total vaccine doses administered | 908,715 | 499,293 | 409,422 |
| Pfizer | 560,423 | 322,092 | 238,331 |
| Moderna | 319,443 | 160,109 | 159,334 |
| Johnson & Johnson | 28,849 | 17,092 | 11,757 |
| Total individuals with one or more doses | 487,354 | 270,476 | 216,878 |
| Pfizer | 292,915 | 169,801 | 123,114 |
| Moderna | 165,590 | 83,583 | 82,007 |
| Johnson & Johnson | 28,849 | 17,092 | 11,757 |
| Total individuals completely vaccinated | 450,210 | 245,909 | 204,301 |
| Pfizer | 267,427 | 152,233 | 115,194 |
| Moderna | 153,934 | 76,584 | 77,350 |
| Johnson & Johnson | 28,849 | 17,092 | 11,757 |

Percentage of Population Vaccinated December 15, 2020 - August 9, 2021

| | Overall | Ages 12+ | Ages 16+ |
|----------------------------|---------|----------|----------|
| Milwaukee County | | | |
| *Population | 954,209 | 792,322 | 747,409 |
| Received one or more doses | 51.1% | 61.5% | 62.7% |
| Completely vaccinated | 47.2% | 56.8% | 58.3% |
| City of Milwaukee | | | |
| *Population | 596,886 | 489,445 | 456,809 |
| Received one or more doses | 45.3% | 55.3% | 57.1% |

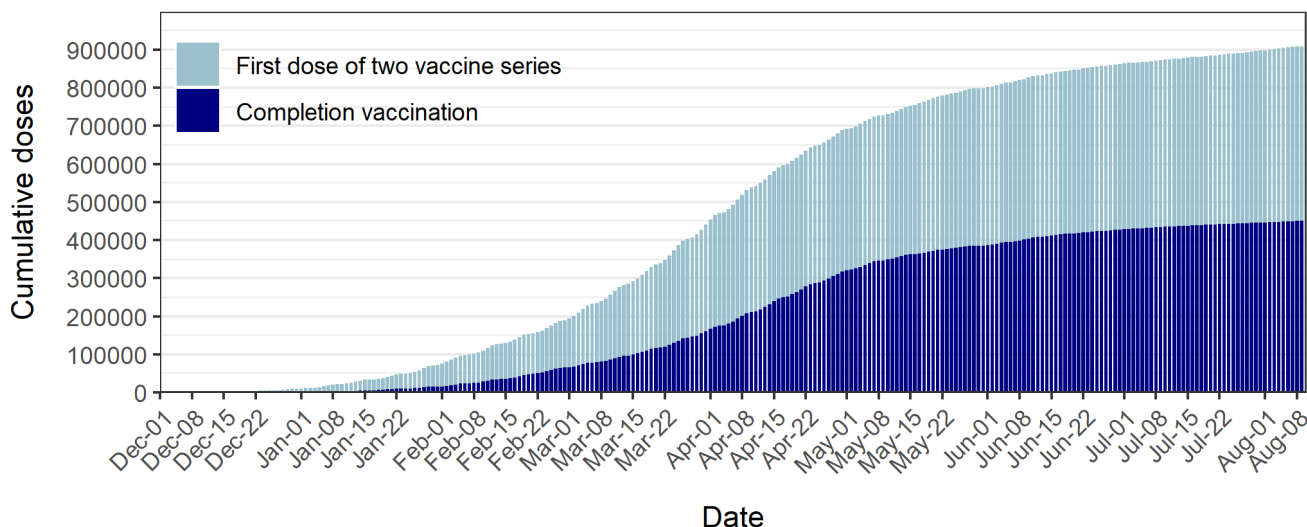
**Percentage of Population Vaccinated
December 15, 2020 - August 9, 2021**

| | Overall | Ages 12+ | Ages 16+ |
|--|----------------|-----------------|-----------------|
| Completely vaccinated | 41.2% | 50.2% | 52.3% |
| Milwaukee County Suburbs | | | |
| *Population | 357,323 | 306,877 | 290,600 |
| Received one or more doses | 60.7% | 70.7% | 71.6% |
| Completely vaccinated | 57.2% | 66.6% | 67.7% |
| *Population estimates from 2018 US Census American Community Survey | | | |

Cumulative and daily COVID-19 doses administered to Milwaukee County residents

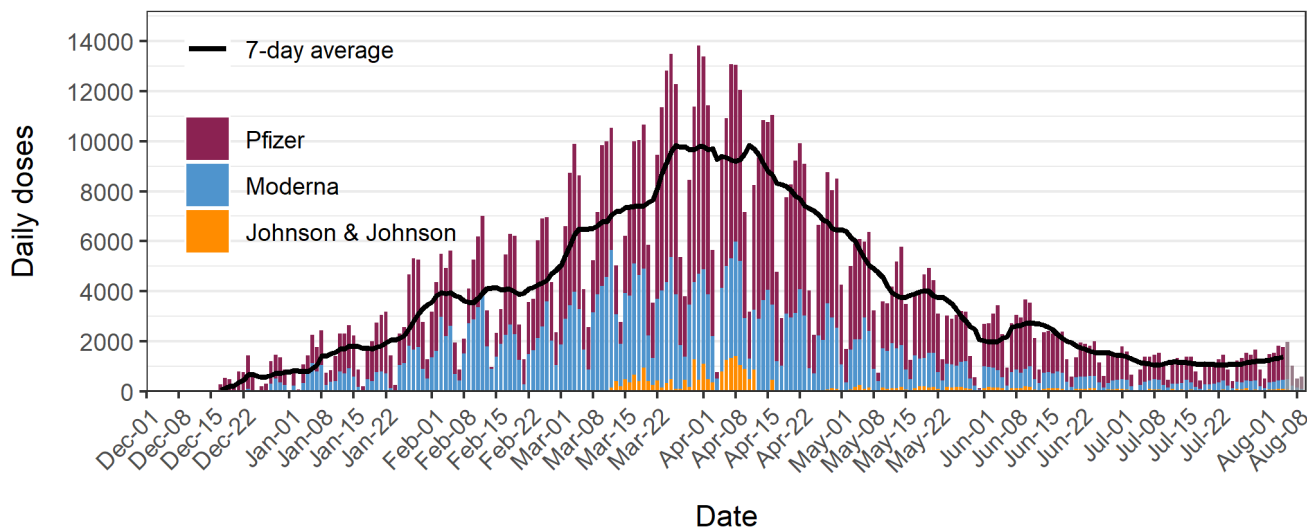
Figure 1 shows cumulative COVID-19 vaccine doses administered to Milwaukee County residents. A total of 908715 doses have been administered from December 15, 2020 through August 9, 2021. The light blue color represents the first dose in a series (Pfizer or Moderna). The dark blue color indicates a completion dose (first dose of Johnson & Johnson or second dose of Pfizer or Moderna). **Figure 2** shows daily COVID-19 vaccine doses administered to Milwaukee County residents. The overlaid black line shows the 7-day average of daily doses and the bars are colored by vaccine: Pfizer (red), Moderna (blue), and Johnson & Johnson (orange). Daily doses peaked in late March to early April and have since declined.

Figure 1: Cumulative COVID-19 vaccine doses administered to Milwaukee Co. residents



Data source: Wisconsin Immunization Registry (WIR)
Created by the Milwaukee County COVID-19 Epidemiology Intel Team

Figure 2: Daily COVID-19 vaccine doses administered to Milwaukee Co. residents

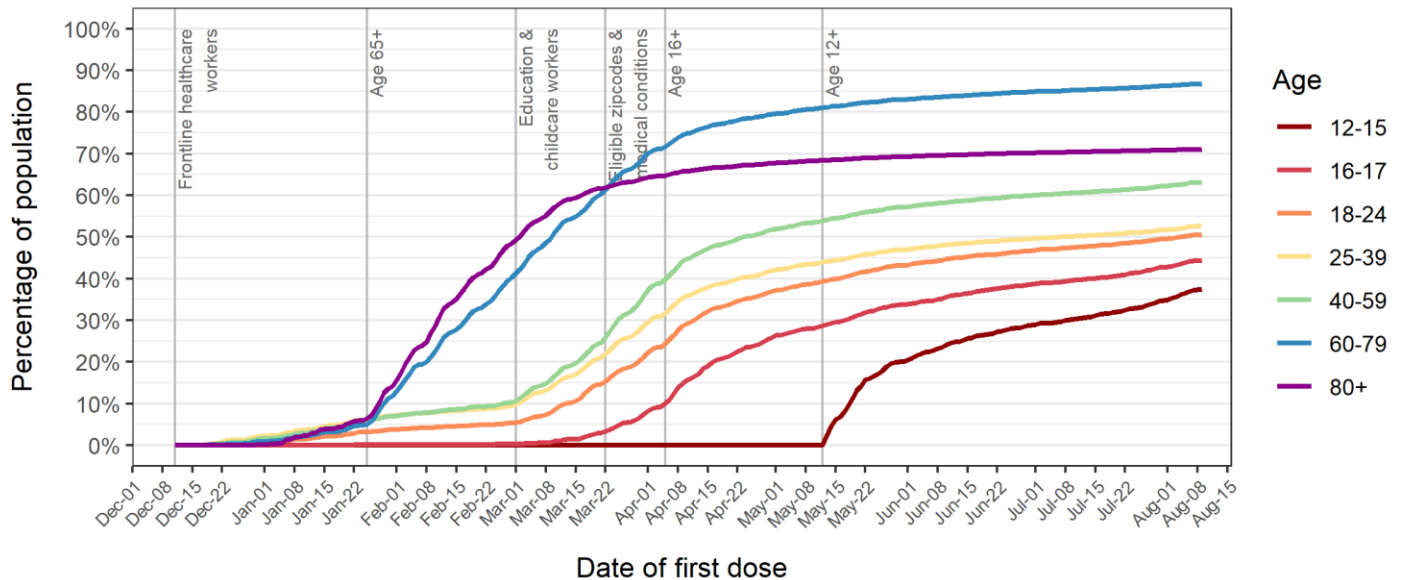


Data source: Wisconsin Immunization Registry (WIR)
Created by the Milwaukee County COVID-19 Epidemiology Intel Team

Percentages of Milwaukee County residents partially and completely vaccinated by age group

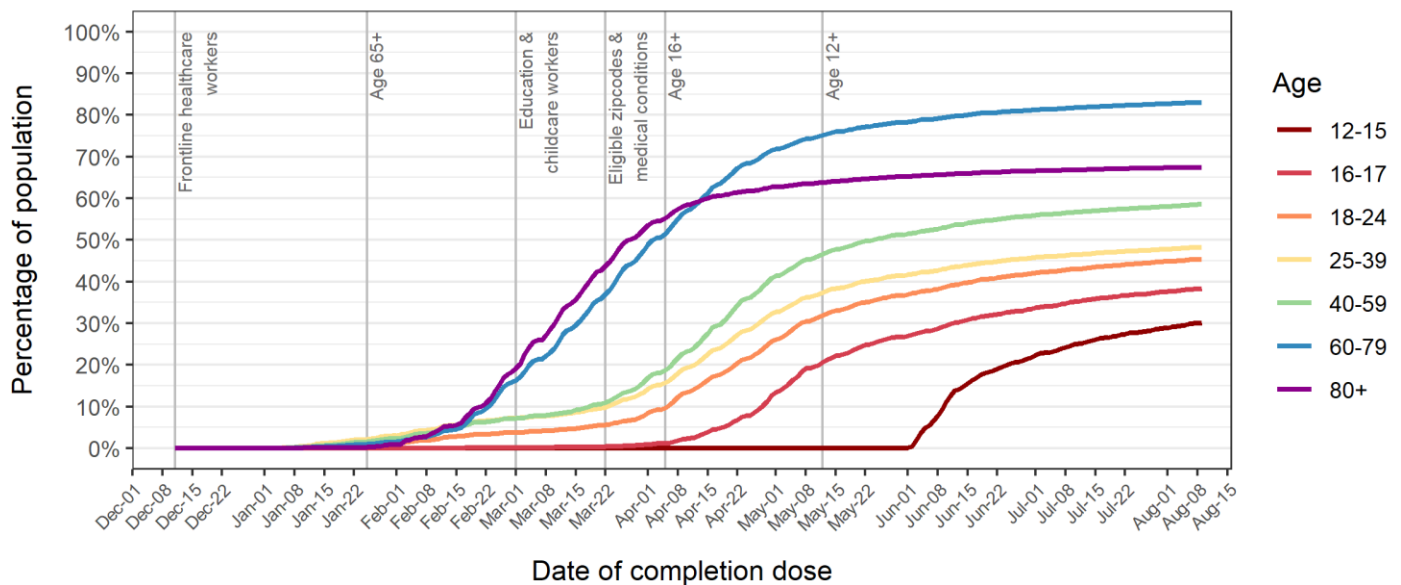
Figure 3 shows the percentage over time of Milwaukee County residents who received at least one dose of any COVID-19 vaccine by age group. **Figure 4** shows the percentage over time of Milwaukee County residents who are completely vaccinated with any COVID-19 vaccine by age group. The vertical lines show changes in vaccine eligibility in Milwaukee County.

Figure 3: Percent of Milwaukee Co. residents with at least one dose of any COVID-19 vaccine



Data source: Wisconsin Immunization Registry (WIR)
Created by the Milwaukee County COVID-19 Epidemiology Intel Team

Figure 4: Percent of Milwaukee Co. residents completely vaccinated with any COVID-19 vaccine

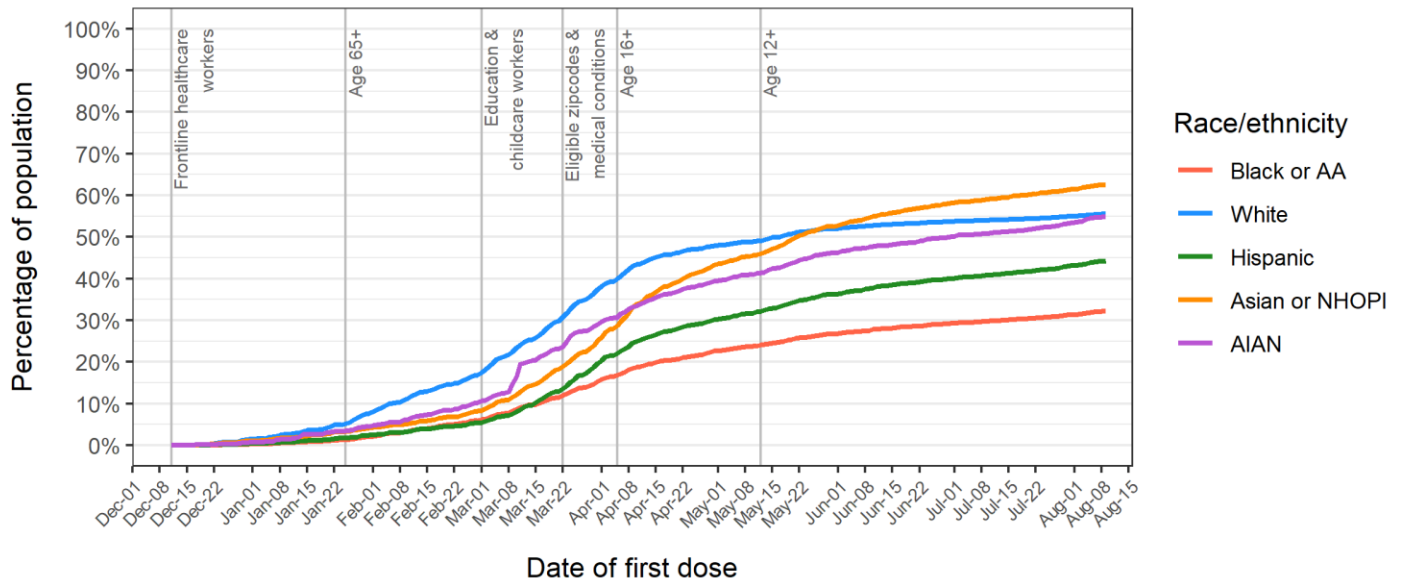


Data source: Wisconsin Immunization Registry (WIR)
Created by the Milwaukee County COVID-19 Epidemiology Intel Team

Proportions of Milwaukee County residents partially and completely vaccinated by race/ethnicity group

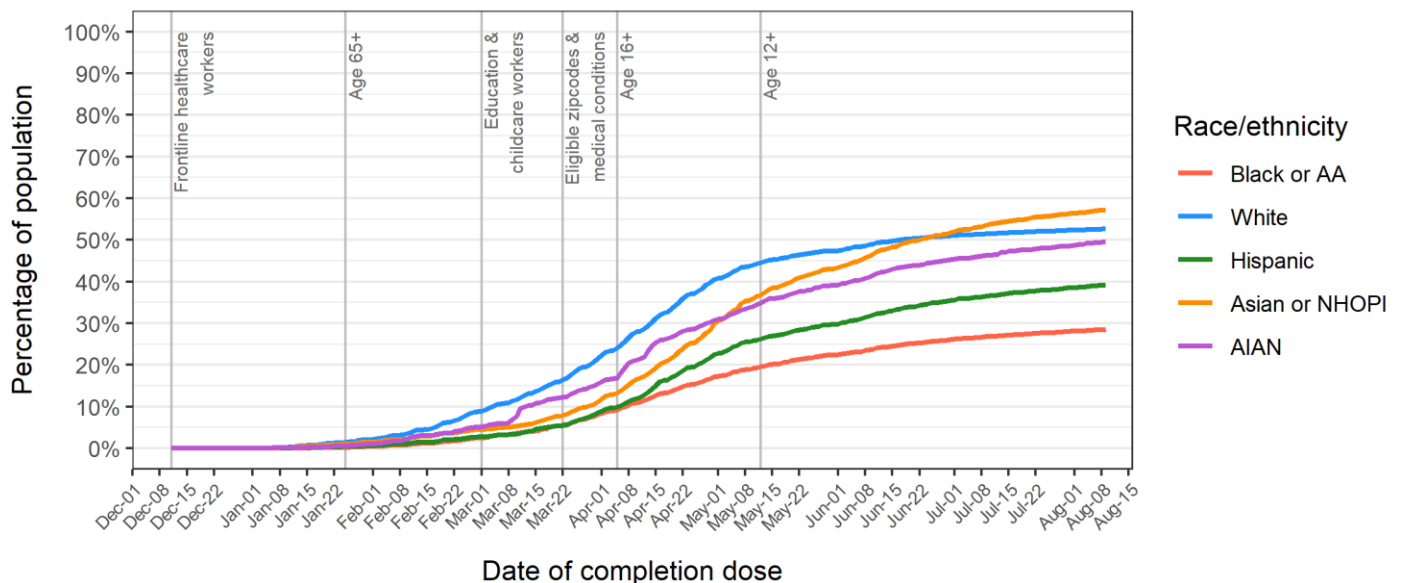
Figure 5 shows the percentage over time of Milwaukee County residents who received at least one dose of any COVID-19 vaccine by race/ethnicity group. **Figure 6** shows the percentage over time of Milwaukee County residents who are completely vaccinated with any COVID-19 vaccine by race/ethnicity group. The vertical lines show changes in vaccine eligibility in Milwaukee County.

Figure 5: Percent of Milwaukee Co. residents with at least one dose of any COVID-19 vaccine



Data source: Wisconsin Immunization Registry (WIR)
Created by the Milwaukee County COVID-19 Epidemiology Intel Team

Figure 6: Percent of Milwaukee Co. residents completely vaccinated with any COVID-19 vaccine



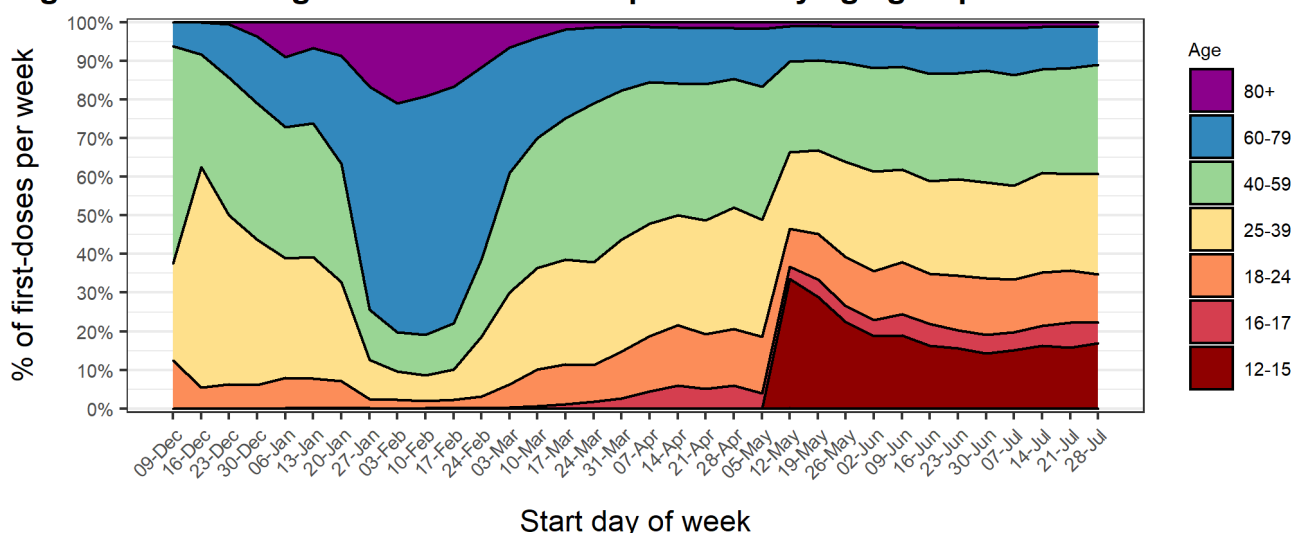
Data source: Wisconsin Immunization Registry (WIR)
Created by the Milwaukee County COVID-19 Epidemiology Intel Team

Percentages of first-doses of COVID-19 vaccine administered to Milwaukee County residents by age and race/ethnicity groups

Figure 7 shows the percentage of first-doses of COVID-19 vaccine administered per week to Milwaukee County residents by age group. After vaccines first became available to healthcare personnel, middle-aged groups (25-59) were the majority of new vaccinees. After eligibility opened up to ages 65+, the oldest two age groups became the majority. The younger age groups (< 60) have become the majority of people vaccinated since eligibility opened up to education staff on March 1st.

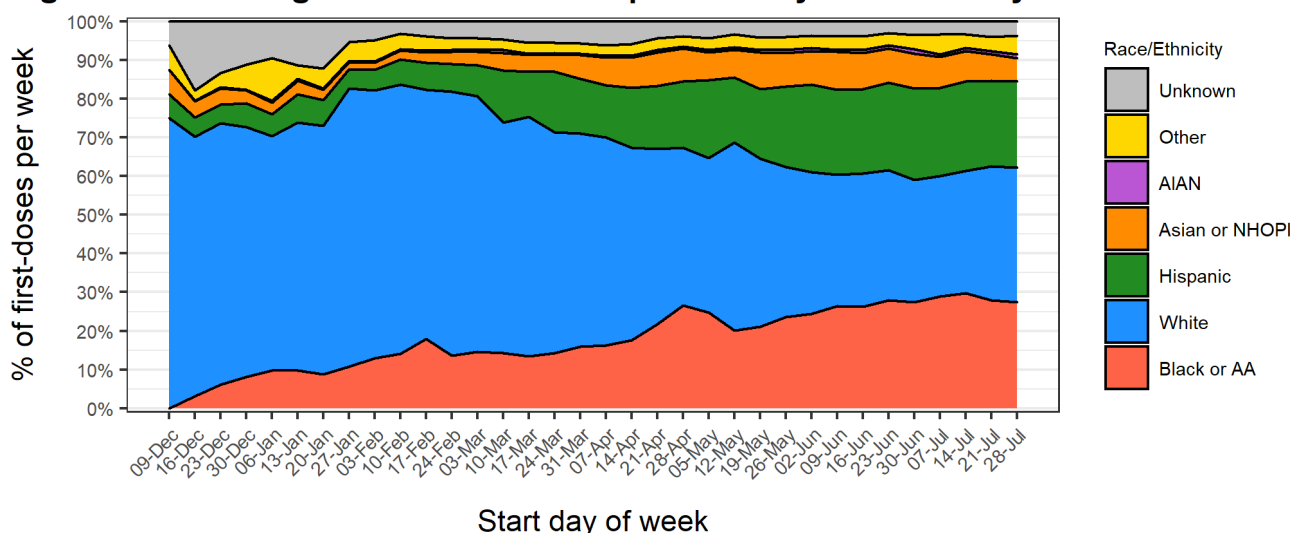
Figure 8 shows the percentage of first-doses of COVID-19 vaccine administered per week to Milwaukee County residents by race/ethnicity. Non-Hispanic Whites continue to make up the majority, however Black/AA, Hispanic, and Asian groups have become an increasing proportion of the newly vaccinated over time.

Figure 7: Percentage of total first doses per week by age group in Milwaukee Co.



Data source: Wisconsin Immunization Registry (WIR)
Created by the Milwaukee County COVID-19 Epidemiology Intel Team

Figure 8: Percentage of total first doses per week by race/ethnicity in Milwaukee Co.



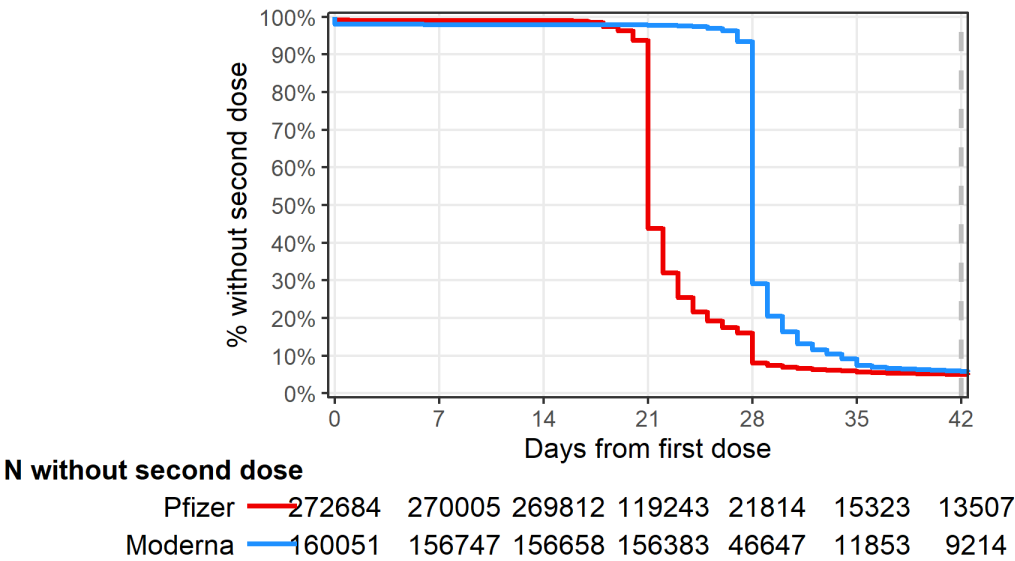
Data source: Wisconsin Immunization Registry (WIR)
Created by the Milwaukee County COVID-19 Epidemiology Intel Team

Completion of immunization series among Milwaukee County residents who received at least one dose of Pfizer or Moderna vaccines

Figure 9 describes the timing between doses for Milwaukee County residents who received Pfizer or Moderna vaccines. This graph includes data for residents who received their first dose of Pfizer or Moderna at least 42 days ago (prior to June 27, 2021). The recommended interval for receiving the second dose is 21 days for the Pfizer vaccine and 28 days for the Moderna vaccine; the second dose is considered valid if administered 4 days prior to the recommended interval and up to 42 days following the first dose for each vaccine.

Fully 94.7% of all residents who received their first dose of Pfizer prior to June 27, 2021 received their second dose within 42 days, indicating very strong completion within guidelines for those receiving a first dose.

Figure 9: Vaccine series completion among Milwaukee Co. residents receiving Pfizer or Moderna



Data source: Wisconsin Immunization Registry (WIR)
 Created by the Milwaukee County COVID-19 Epidemiology Intel Team

Summary of vaccine series completion rates for Milwaukee County Pfizer and Moderna recipients

Table 1 summarizes the rates of vaccination series completion (Pfizer and Moderna 2-dose series) by groups based on vaccine received, age, sex, and race/ethnicity. This table includes data for residents who received their first dose of Pfizer or Moderna at least 42 days ago (prior to June 27, 2021); 42 days is the maximum recommended period for receiving the second dose. Variation across groups exists, but is relatively minor, with the exception of a small group with unknown sex.

Table 1: Summary of vaccine series completion rates for Milwaukee County Pfizer and Moderna recipients

| Characteristic | Percent with second dose within 42 days ¹ |
|------------------|--|
| Vaccine received | |
| Pfizer | 259,168 / 272,673 (95.0%) |
| Moderna | 150,837 / 160,051 (94.2%) |
| Age | |
| 12-15 | 13,102 / 13,745 (95.3%) |
| 16-17 | 8,756 / 9,274 (94.4%) |
| 18-24 | 36,033 / 38,867 (92.7%) |
| 25-39 | 97,291 / 103,469 (94.0%) |
| 40-59 | 120,257 / 127,128 (94.6%) |
| 60-79 | 111,645 / 116,033 (96.2%) |
| 80+ | 22,921 / 24,208 (94.7%) |
| Sex | |
| Female | 222,832 / 234,565 (95.0%) |
| Male | 185,649 / 196,394 (94.5%) |
| Unknown | 1,524 / 1,765 (86.3%) |
| Race/Ethnicity | |
| Black or AA | 61,946 / 67,035 (92.4%) |
| White | 241,862 / 251,796 (96.1%) |
| Hispanic | 47,628 / 51,273 (92.9%) |
| Asian or NHOPI | 21,369 / 22,605 (94.5%) |
| AIAN | 2,072 / 2,198 (94.3%) |
| Other | 14,111 / 14,955 (94.4%) |

Table 1: Summary of vaccine series completion rates for Milwaukee County Pfizer and Moderna recipients

| Characteristic | Percent with second dose within 42 days ¹ |
|----------------|--|
| Unknown | 21,017 / 22,862 (91.9%) |

¹n / N (%)

Data Sources & Acknowledgments

This report was created by faculty and staff in the Medical College of Wisconsin (MCW) Institute for Health and Equity (IHE) in partnership with representatives from local health departments and faculty from the University of Wisconsin-Milwaukee Zilber School of Public Health. Data sources include the Wisconsin Immunization Registry (WIR) and the US Census Bureau.

Contact Information

For additional questions on this report, please contact Darren Rausch, Health Officer/Director, Greenfield Health Department, and Lead, Milwaukee County COVID-19 Epidemiology Intel Team:
Darren.Rausch@greenfieldwi.us or (414) 329-5275.