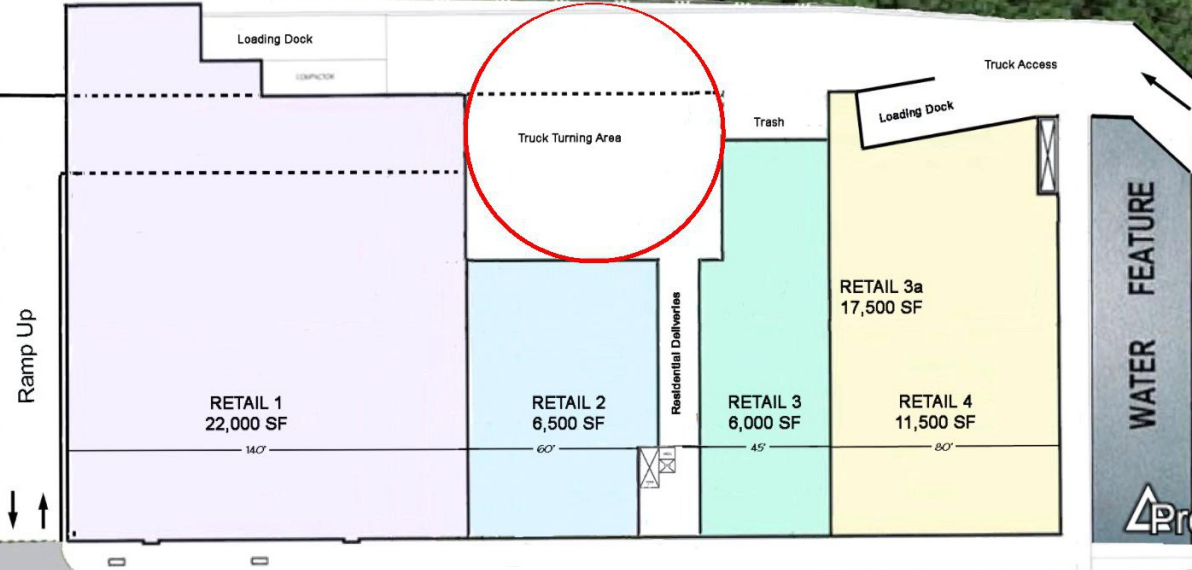


# Freshwater Plaza

1st & Greenfield

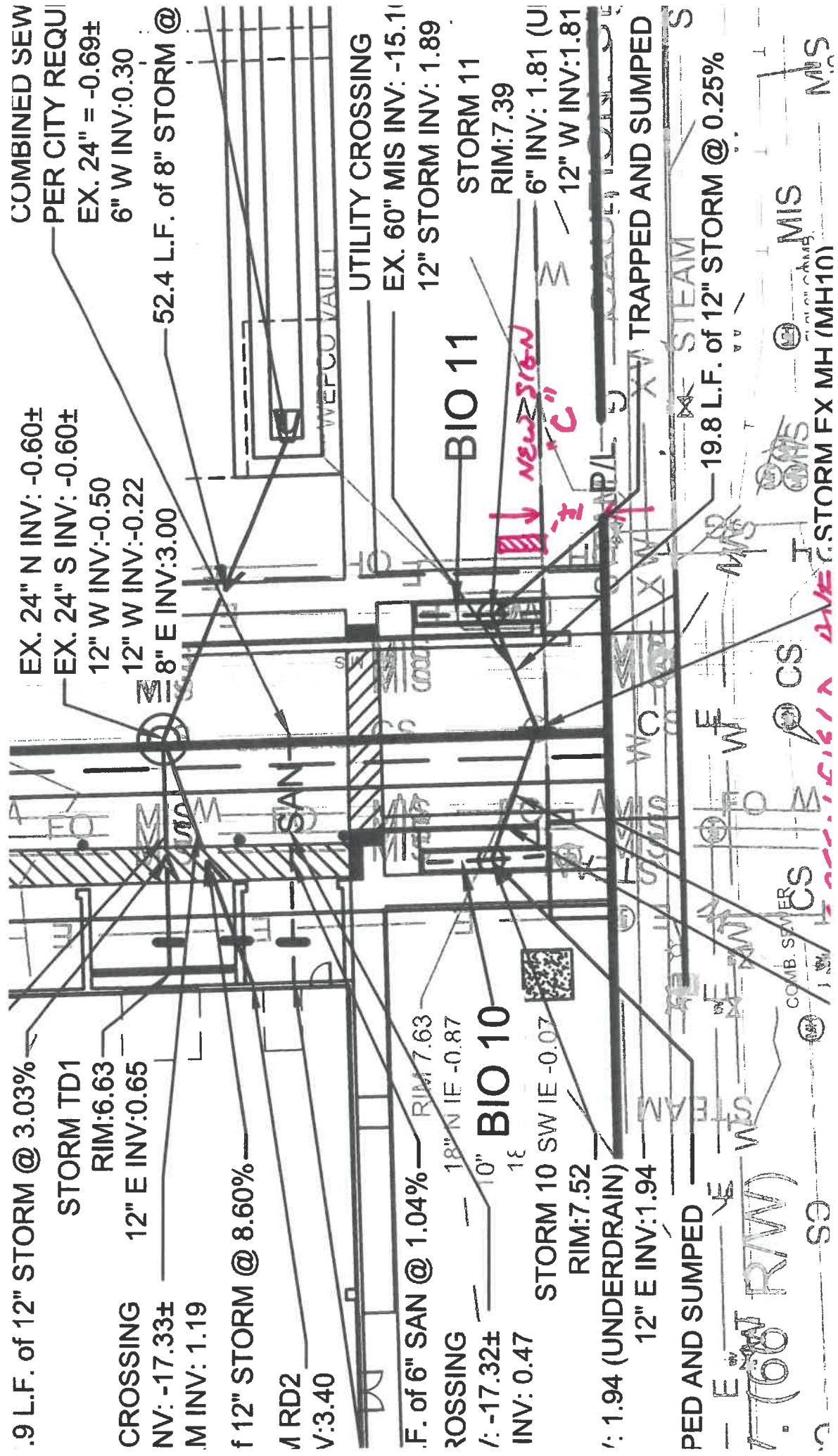






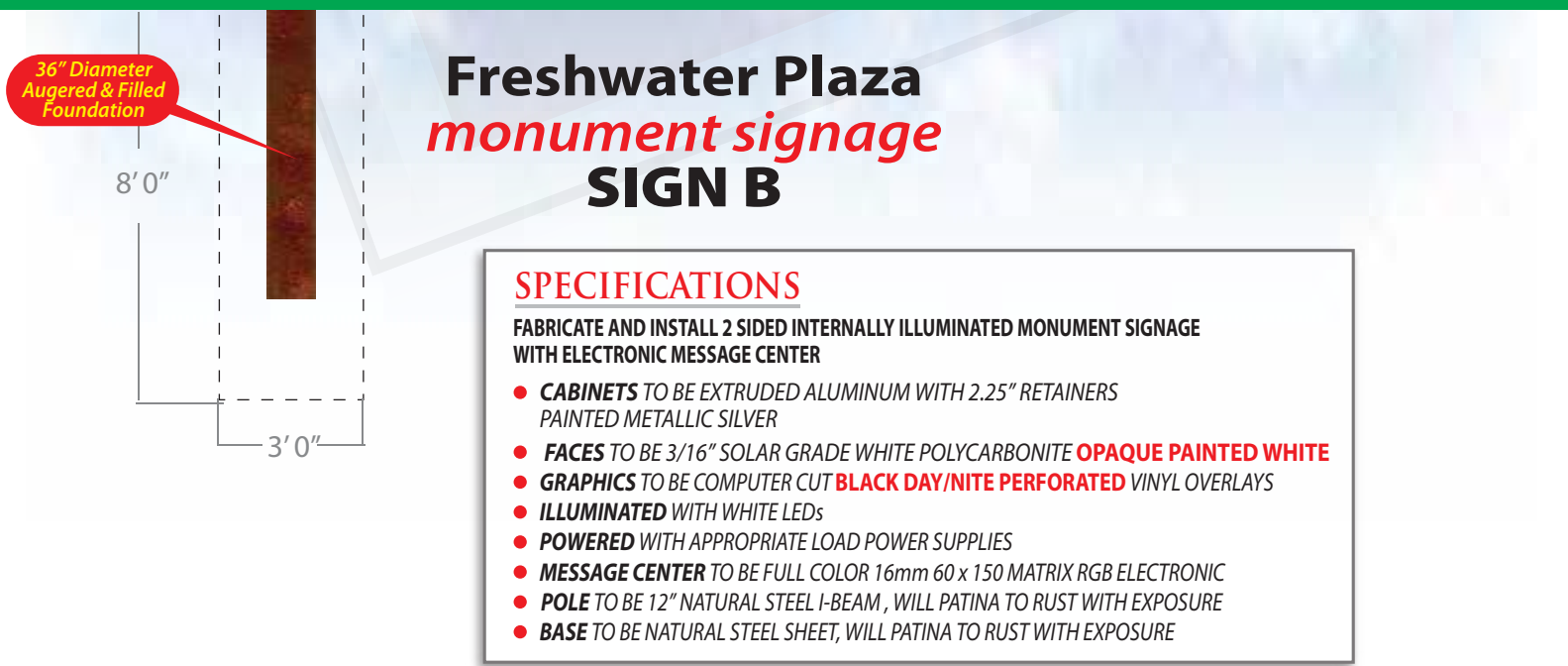
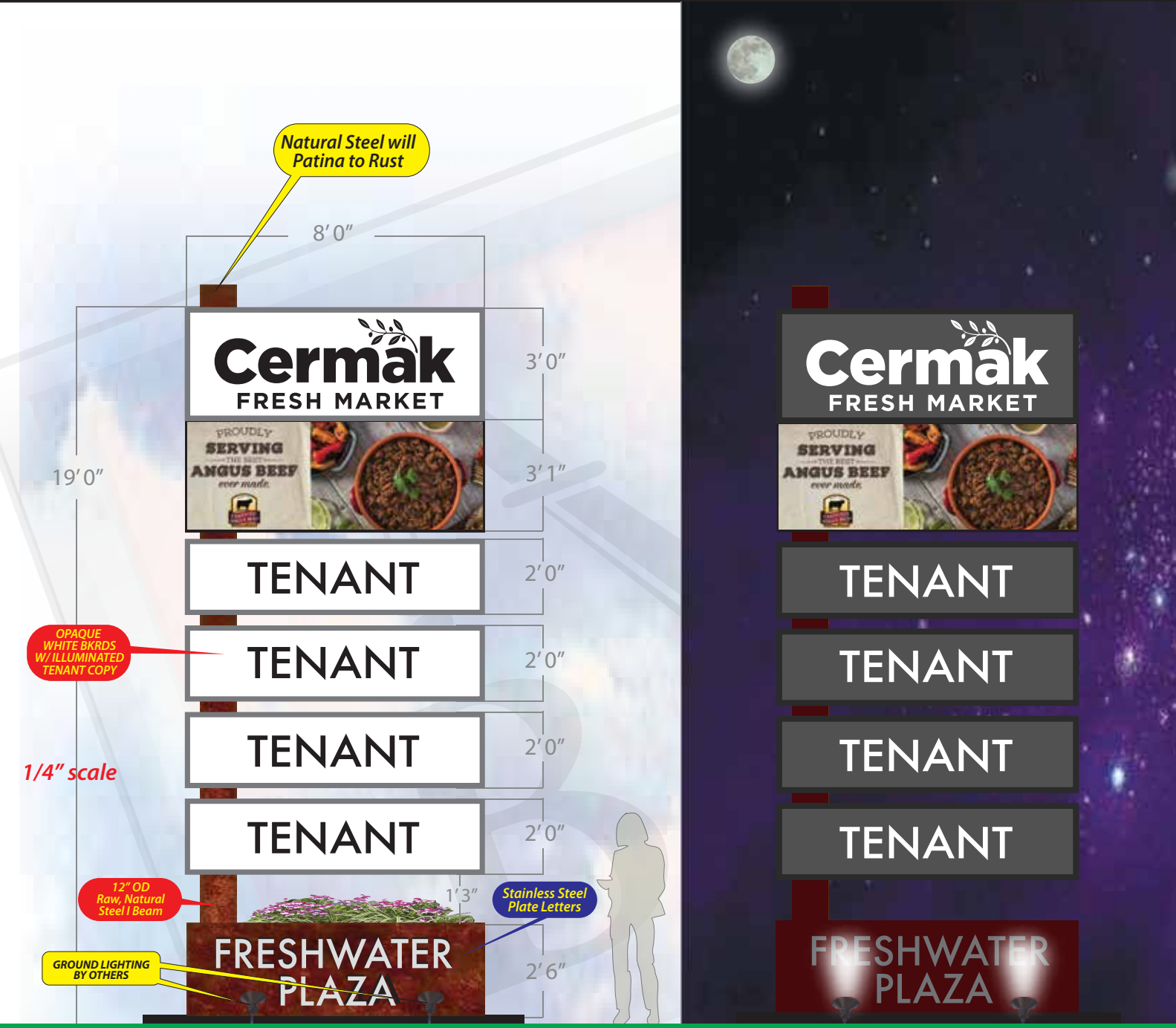
ST  
(Future)  
Branley

1:30 4



SAVED AS Freshwater Plaza SALES REP Bob Hacker

LOCATION Milwaukee Wi DATE 7 Nov 17 REVISION 4 Apr 18 13 June 18

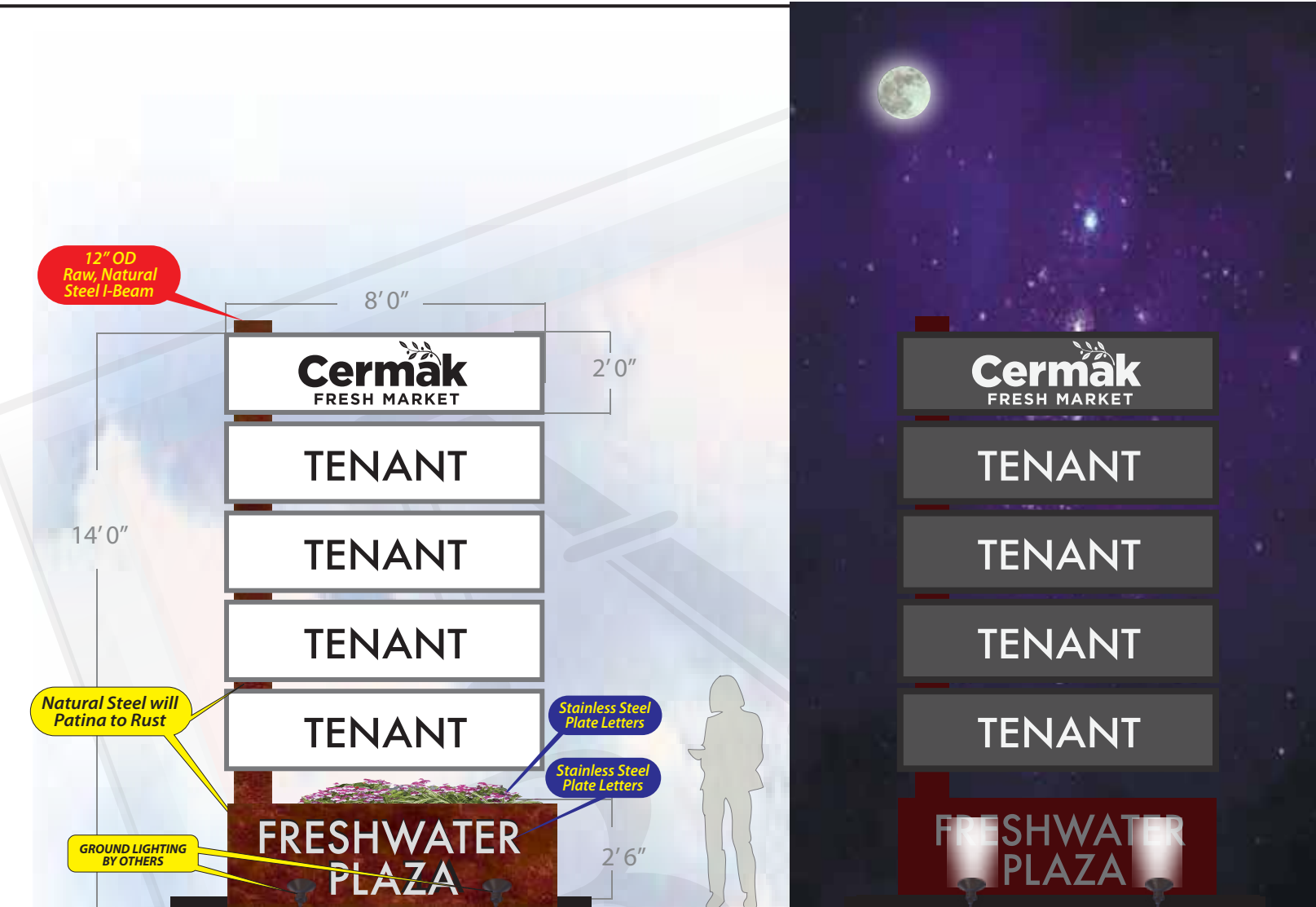


- SPECIFICATIONS
- FABRICATE AND INSTALL 2 SIDED INTERNALLY ILLUMINATED MONUMENT SIGNAGE WITH ELECTRONIC MESSAGE CENTER
- CABINETS TO BE EXTRUDED ALUMINUM WITH 2.25" RETAINERS PAINTED METALLIC SILVER
  - FACES TO BE 3/16" SOLAR GRADE WHITE POLYCARBONITE OPAQUE PAINTED WHITE
  - GRAPHICS TO BE COMPUTER CUT BLACK DAY/NITE PERFORATED VINYL OVERLAYS
  - ILLUMINATED WITH WHITE LEDs
  - POWERED WITH APPROPRIATE LOAD POWER SUPPLIES
  - MESSAGE CENTER TO BE FULL COLOR 16mm 60 x 150 MATRIX RGB ELECTRONIC
  - POLE TO BE 12" NATURAL STEEL I-BEAM , WILL PATINA TO RUST WITH EXPOSURE
  - BASE TO BE NATURAL STEEL SHEET, WILL PATINA TO RUST WITH EXPOSURE



SAVED AS Freshwater Plaza SALES REP Bob Hacker

LOCATION Milwaukee Wi DATE 7 Nov 17 REVISION 4 Apr 18 13 June 18



SPECIFICATIONS

FABRICATE AND INSTALL 2 SIDED INTERNALLY ILLUMINATED MONUMENT SIGNAGE WITH ELECTRONIC MESSAGE CENTER

- **CABINETS** TO BE EXTRUDED ALUMINUM WITH 2.25" RETAINERS PAINTED METALLIC SILVER
- **FACES** TO BE 3/16" SOLAR GRADE WHITE POLYCARBONITE **OPAQUE PAINTED WHITE**
- **GRAPHICS** TO BE COMPUTER CUT **BLACK DAY/NITE PERFORATED** VINYL OVERLAYS
- **ILLUMINATED** WITH WHITE LEDs
- **POWERED** WITH APPROPRIATE LOAD POWER SUPPLIES
- **POLE** TO BE 12" NATURAL STEEL I-BEAM, WILL PATINA TO RUST WITH EXPOSURE
- **BASE** TO BE NATURAL STEEL SHEET, WILL PATINA TO RUST WITH EXPOSURE

FINAL ELECTRICAL  
CONNECTION IS CLIENT'S  
RESPONSIBILITY



our products are certified by:  
Underwriters Laboratories, Inc.

This sign shall be manufactured in accordance with Article 600 of the National Electrical Code and / or the applicable local codes. This includes proper grounding and bonding of the sign. Signs shall bear correct UL Labels.

APPROVAL / DATE