

# MILWAUKEE comprehensive Plan

# Northeast Side Area Plan OPEN HOUSE



Date: **Wednesday, February 27<sup>th</sup>, 2008**

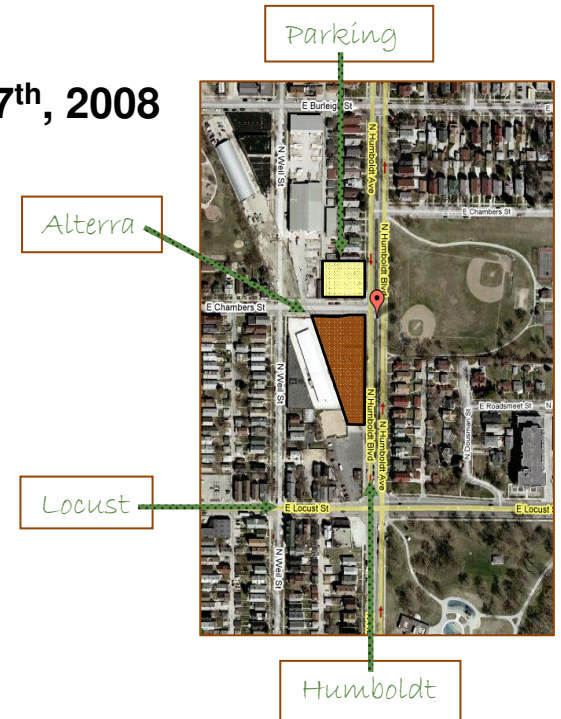
Time: **11:30 am – 2:00 pm**  
or  
**5:00 pm – 7:30 pm**

Location:



**2999 N Humboldt Blvd  
Milwaukee, WI 53202**

\* Public parking just north of Alterra  
On-street parking also available



The City of Milwaukee is in the process of planning for the entire city with thirteen area plans, which will guide future development in the city. The Northeast Side Area Plan is in its final stages, and we invite you to join us for an Open House.

A final draft of the Northeast Side Area Plan and a running PowerPoint presentation of key concepts and catalytic projects will be available for review. Come for 15 minutes or 2 hours, whatever time you can spare, but please do come and share your ideas and comments with us.

CONTACTS:  
Janet Grau at 414.286.5724  
[janet.grau@milwaukee.gov](mailto:janet.grau@milwaukee.gov)

Sarah Horn at 414.286.5620  
[sarah.horn@milwaukee.gov](mailto:sarah.horn@milwaukee.gov)

WEBSITE:  
[www.mkedcd.org/planning/plans/Northeast](http://www.mkedcd.org/planning/plans/Northeast)

